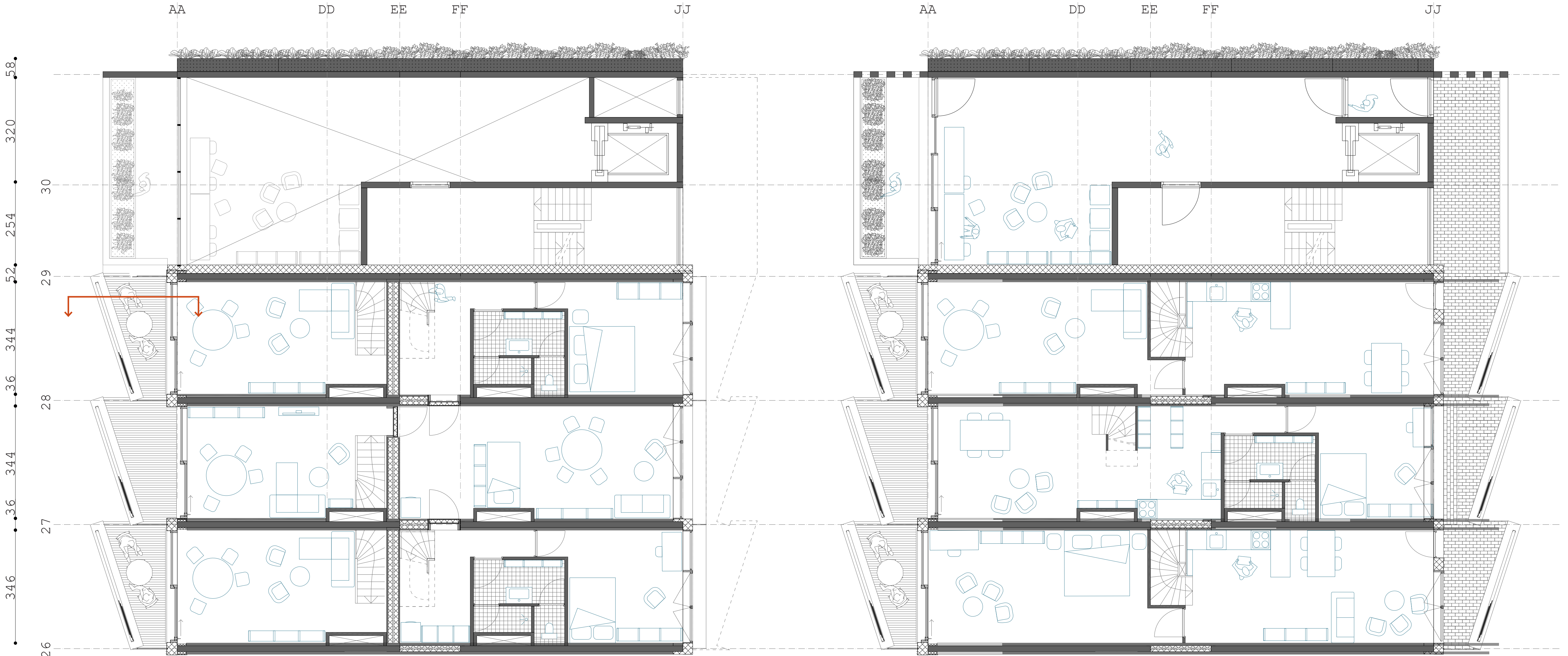
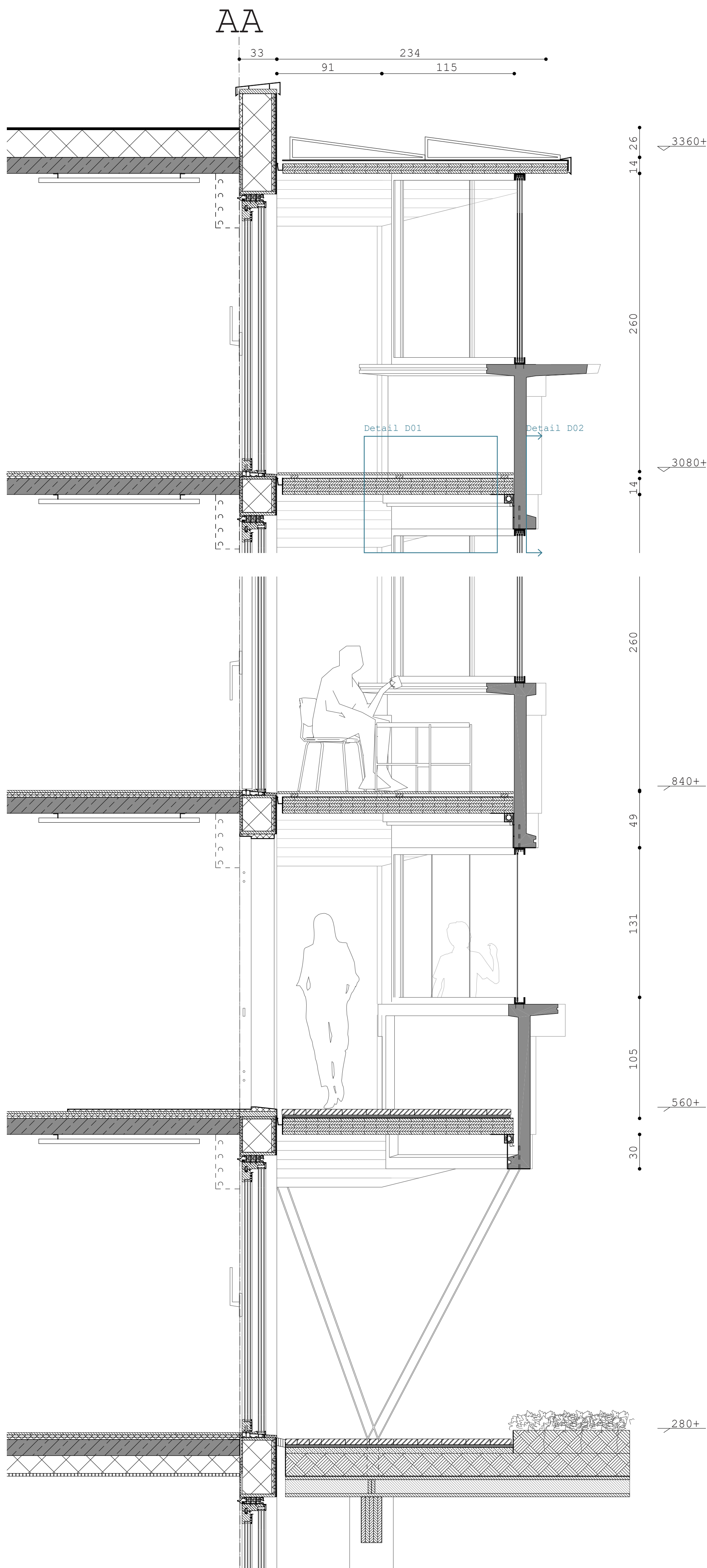


- De Schalkweide -  
Typical Maisonette with joker-room accessibility

Florian Holtbernd | 4714776  
Architectural engineering studio  
June 2024



Typical floorplan 5th floor(left) and 6th floor(right) | 1:50  
scaled to 1:66



**Facade constellation**  
Plastered Gypsum board strengthened fibres 12.5mm  
OSB Airstop 15mm  
Timberframe construction JOIST® 2800x45x88  
2x Isover SystemRoll1700 1200 0,035W/mK 260mm  
Wood-fiber-insulation 0,043W/mK 30mm  
water-resistant foil

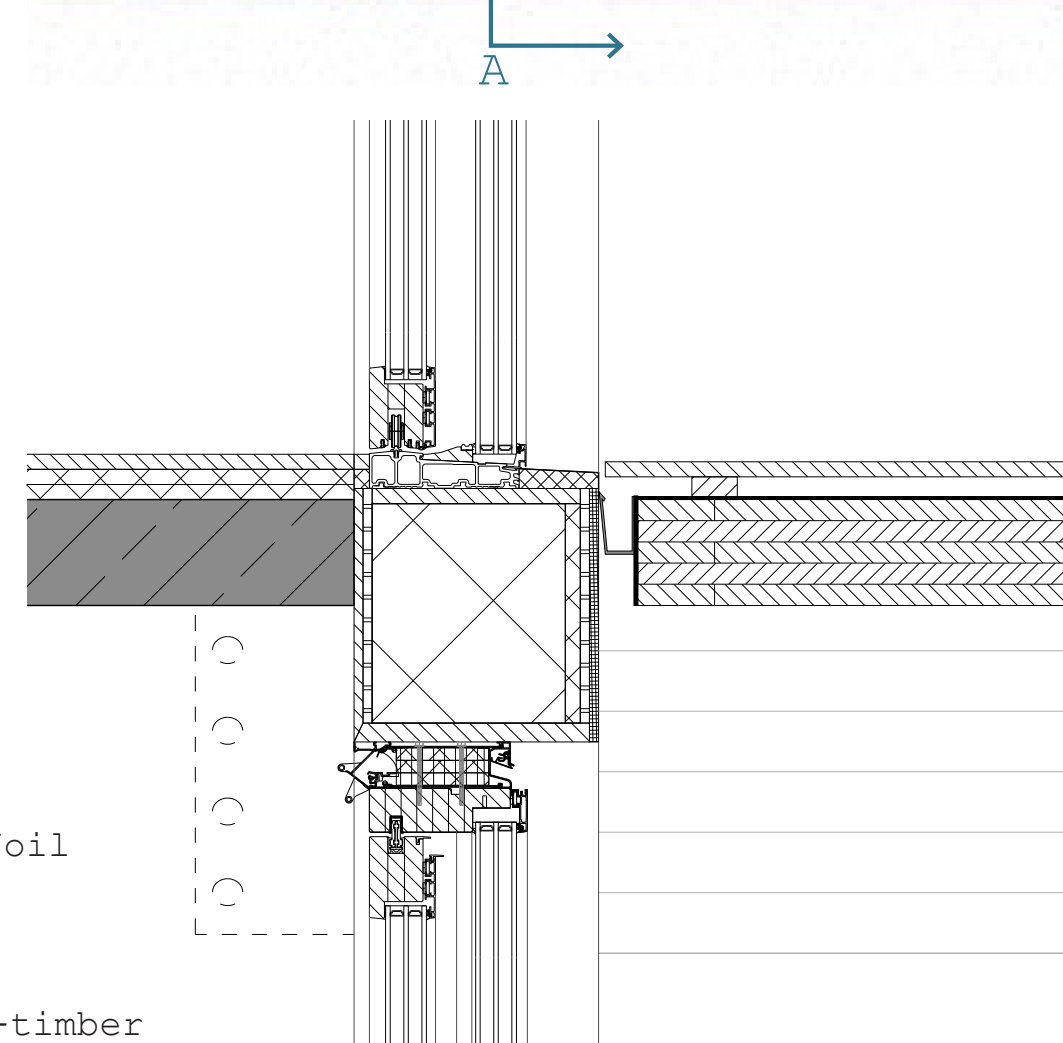
Pladeko®HS330 wood-aluminium sliding doors

Reinforced Concrete slab (re-used)  
Glass seal with integrated PV foil

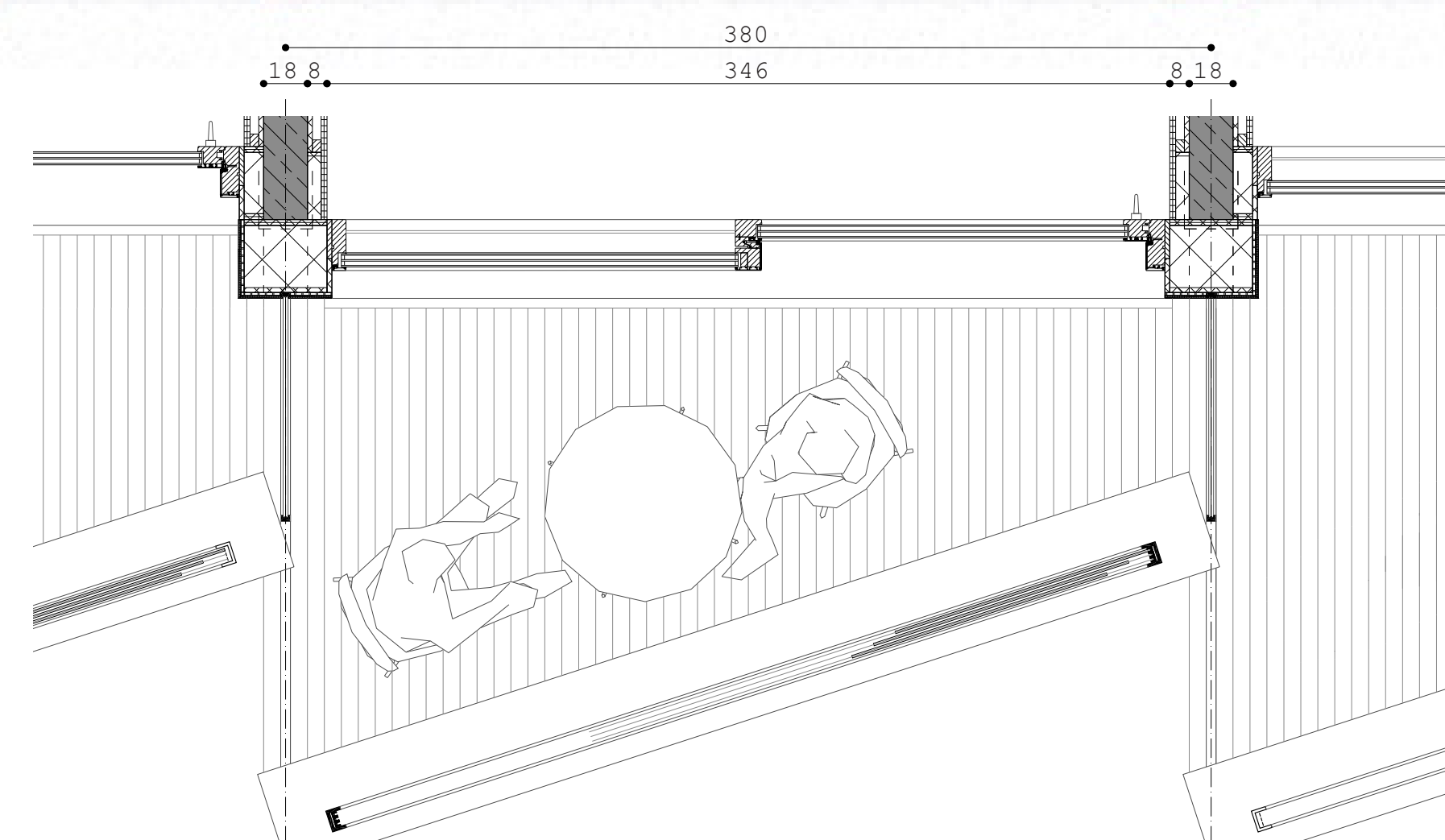
**Interior Floor**  
Wooden flooring 20mm  
Insulating fibres 2x12mm  
Reinforced concrete floor (existing)  
cast in situ 140mm  
Alloy fixture  
Infrared radiation panel

**Exterior Floor**  
Accoya® decking 30mm  
timber frame for decking 20mm  
water-resistant, vapour-transmissive foil  
CLT floor slab (5 layers) 140mm  
anodized steel L-profile  
CLT console  
clad with grey pre-weathered loss-timber

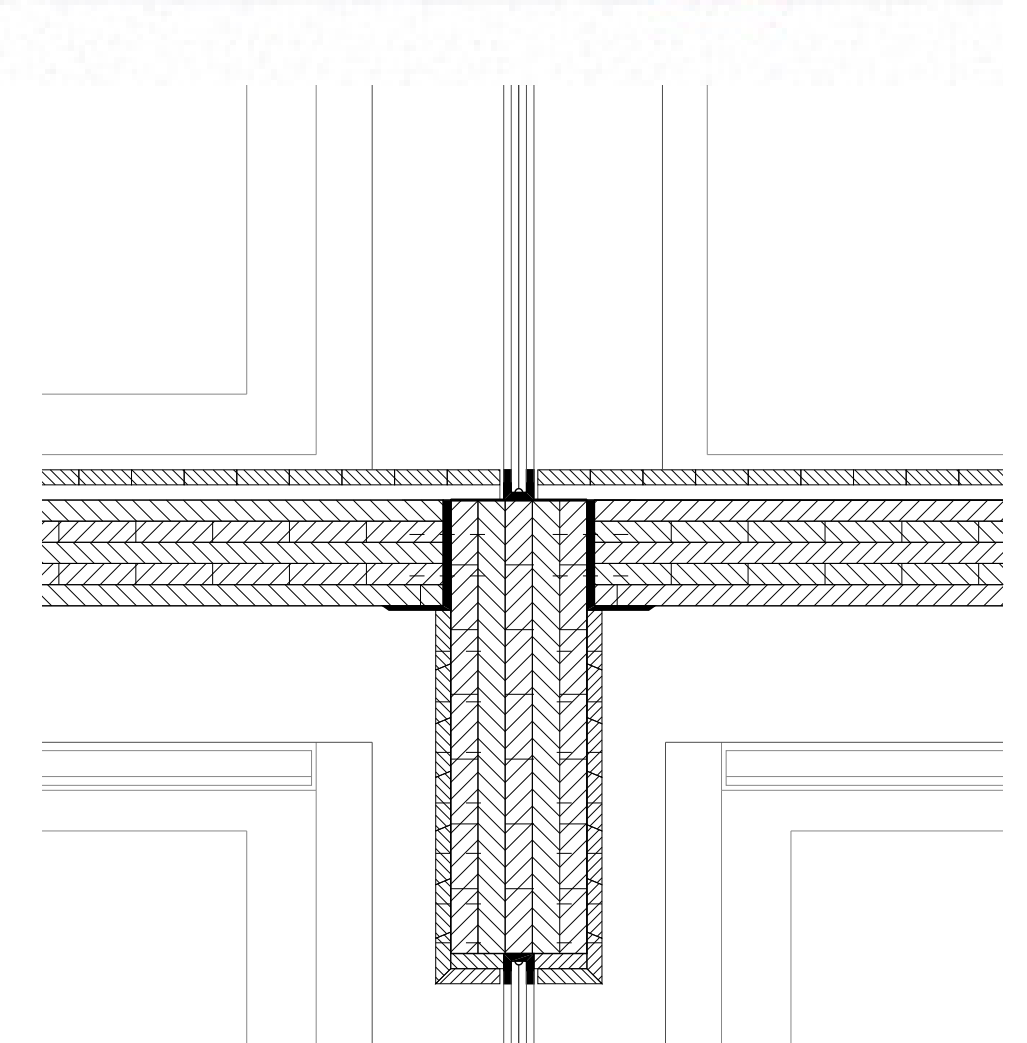
Vertical section | 1:20  
scaled to 1:25



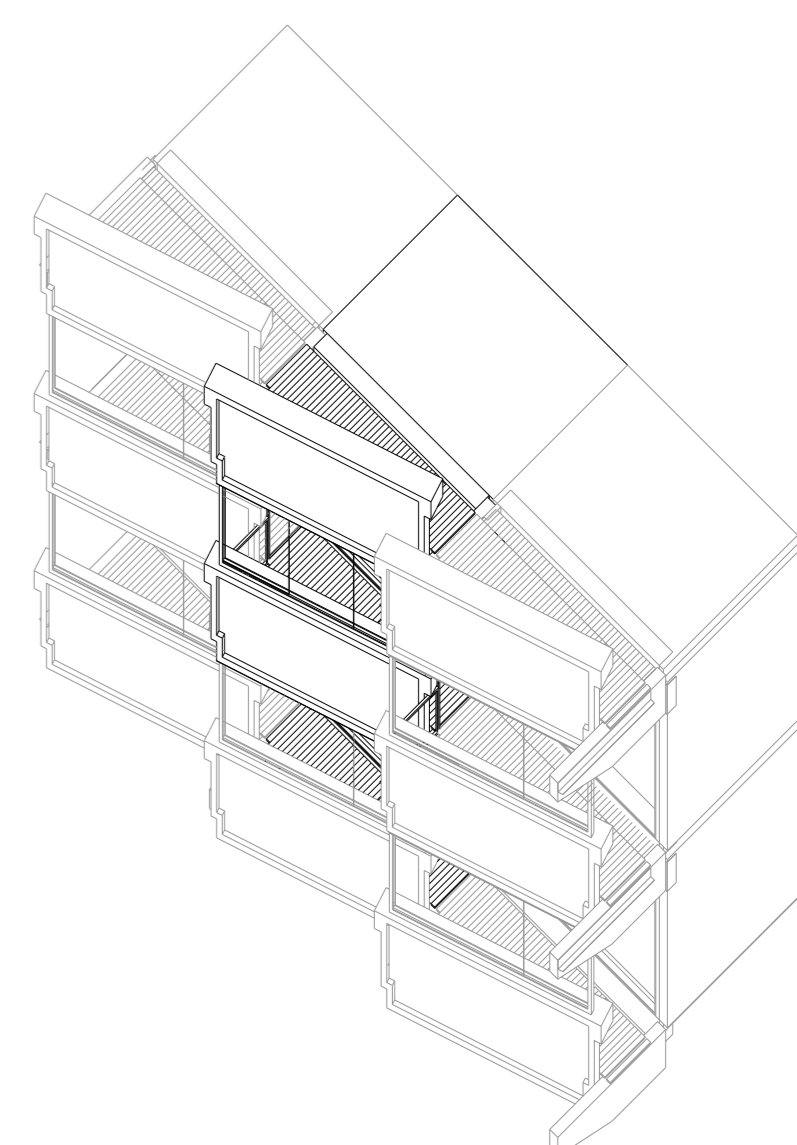
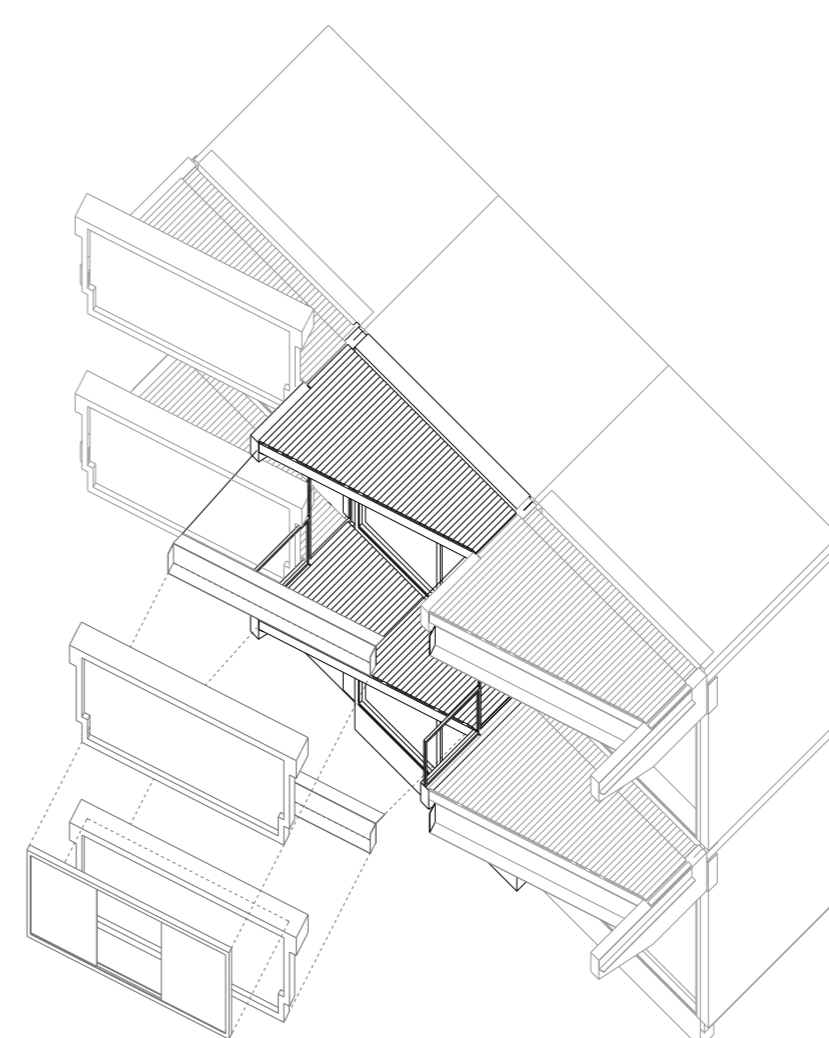
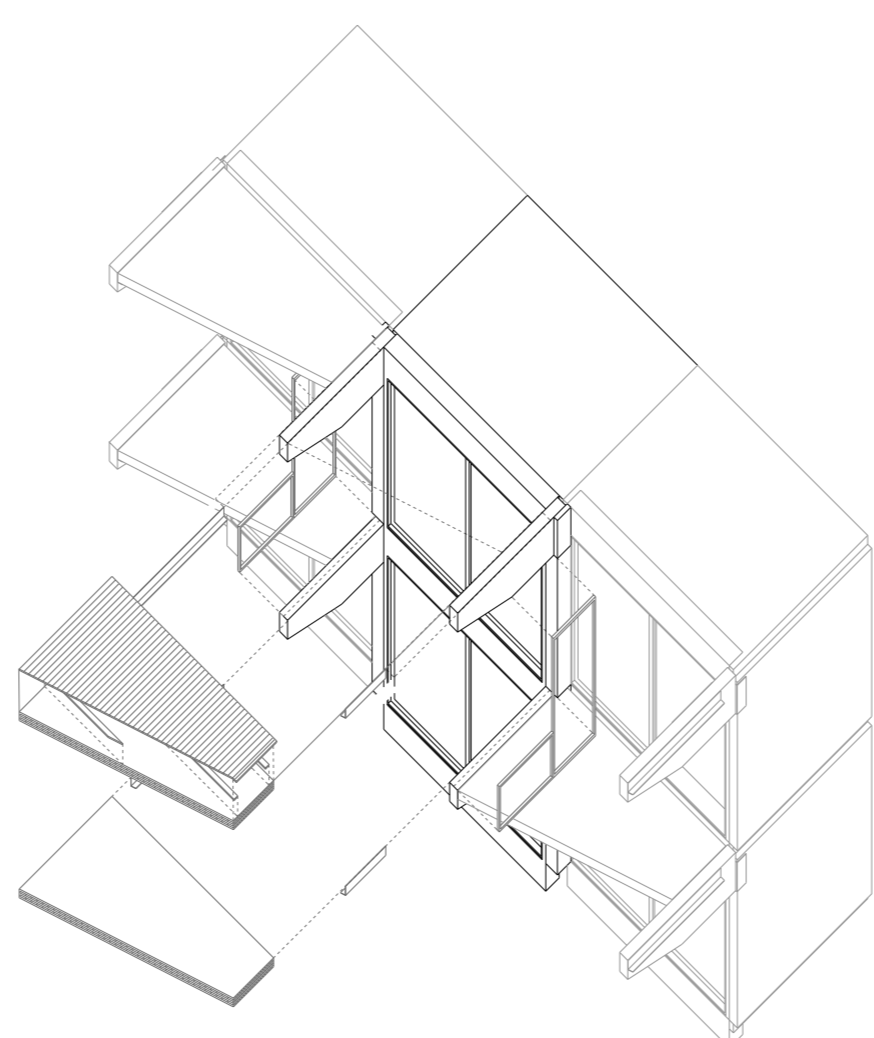
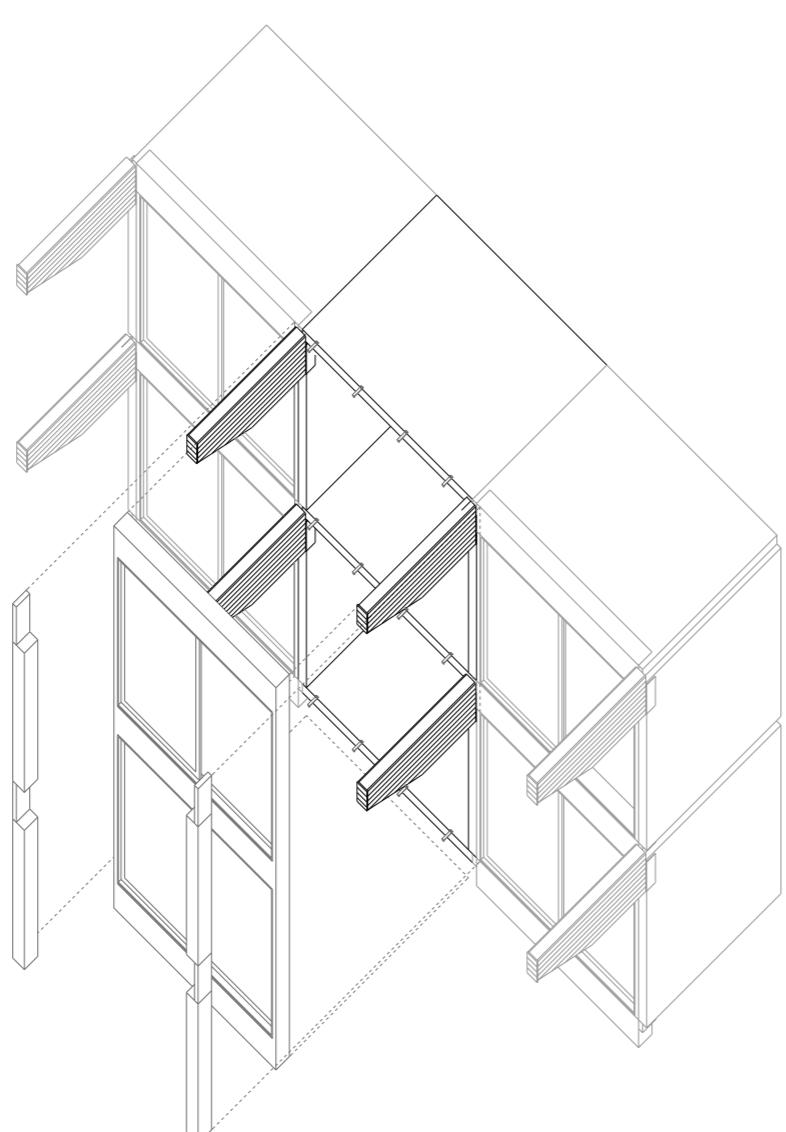
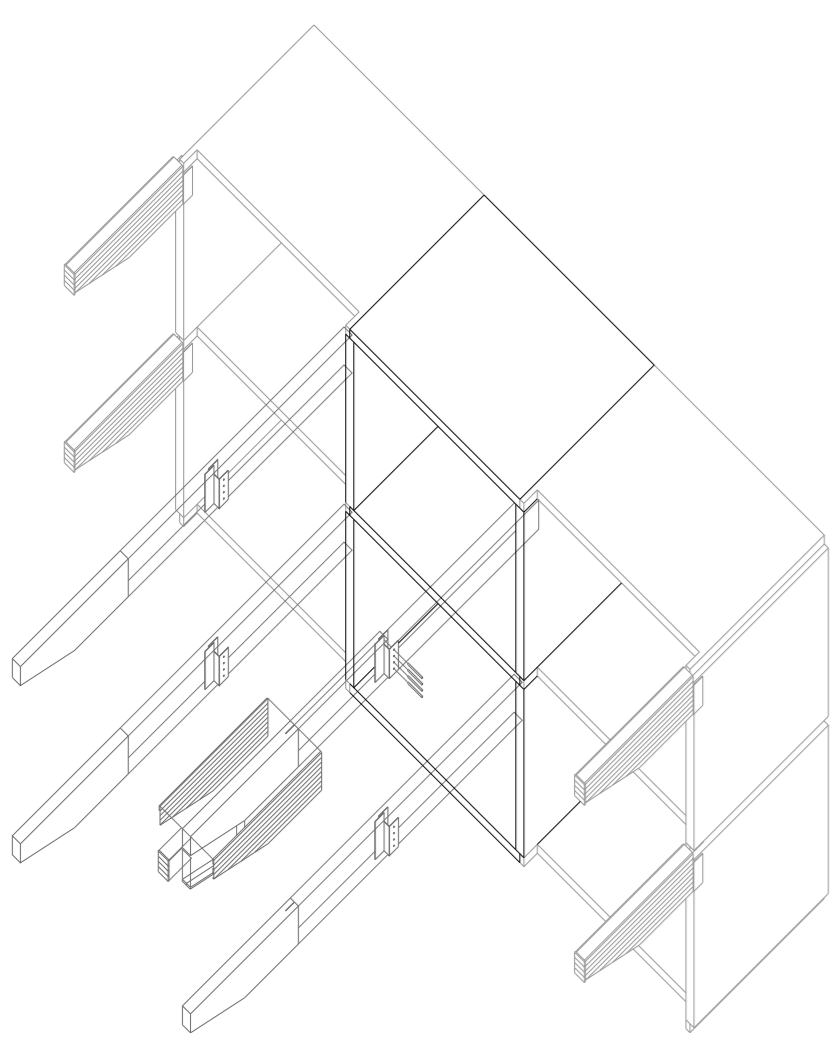
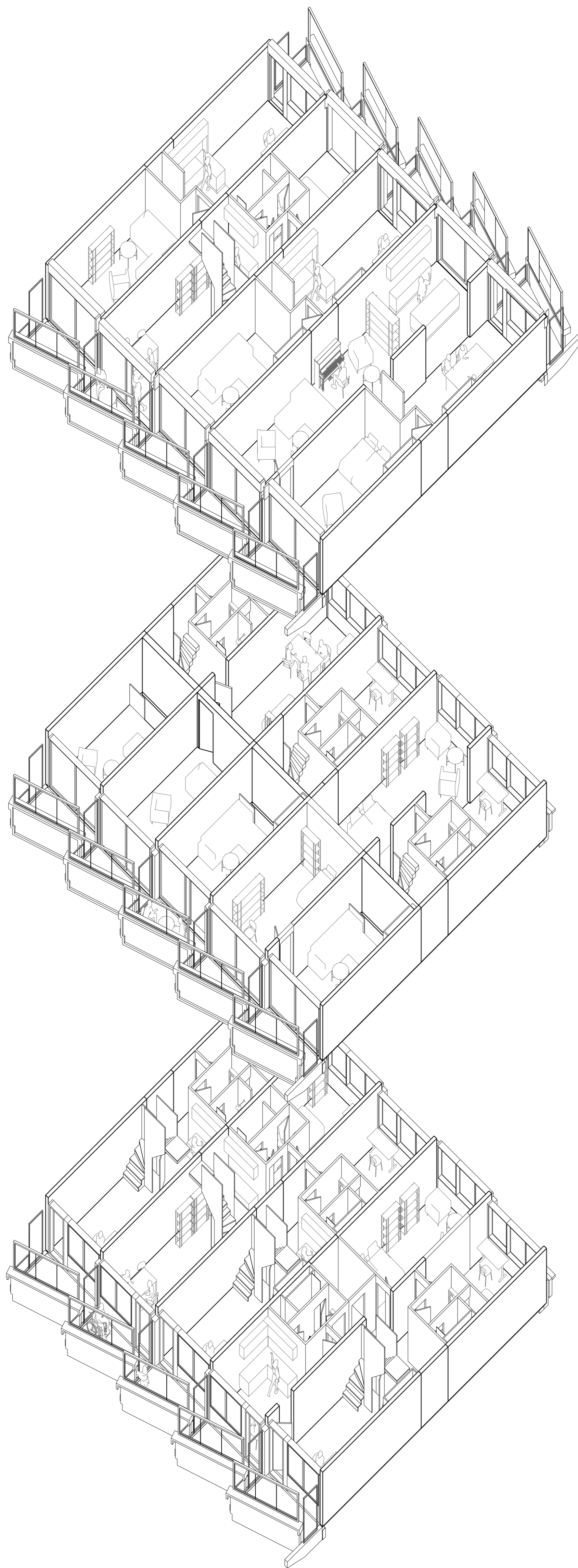
Detail D01 | 1:10  
Transition interior to external balcony



Horizontal Section B-B | 1:20  
scaled to 1:25



Detail D02 | 1:10  
Balcony floor resting on console



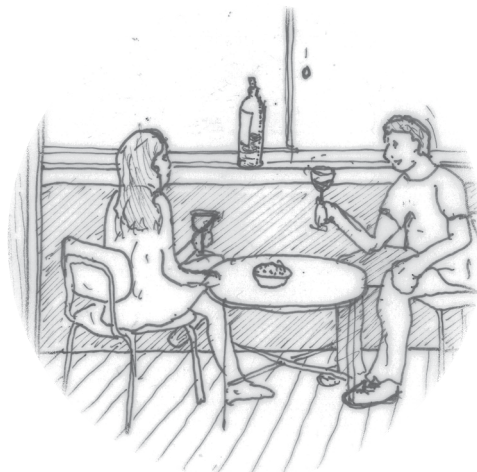
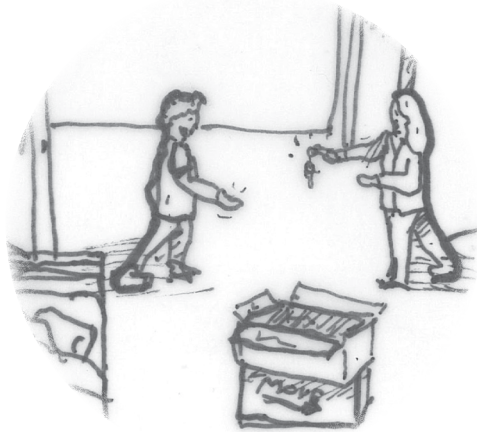
# (un)usual encounters at De Schalkweide

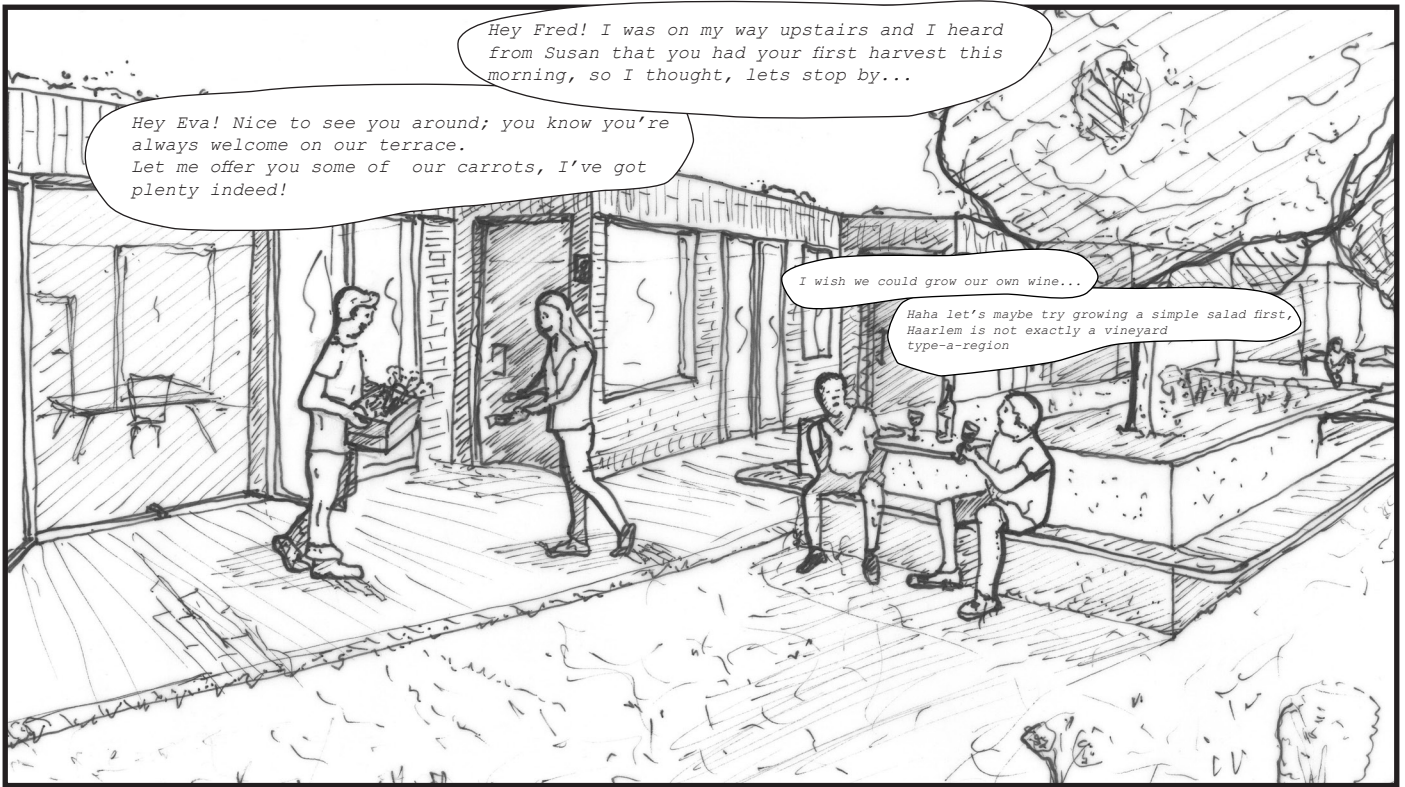


a story of neighbourly care, routine and change

by Florian Holtbernd

June 2024

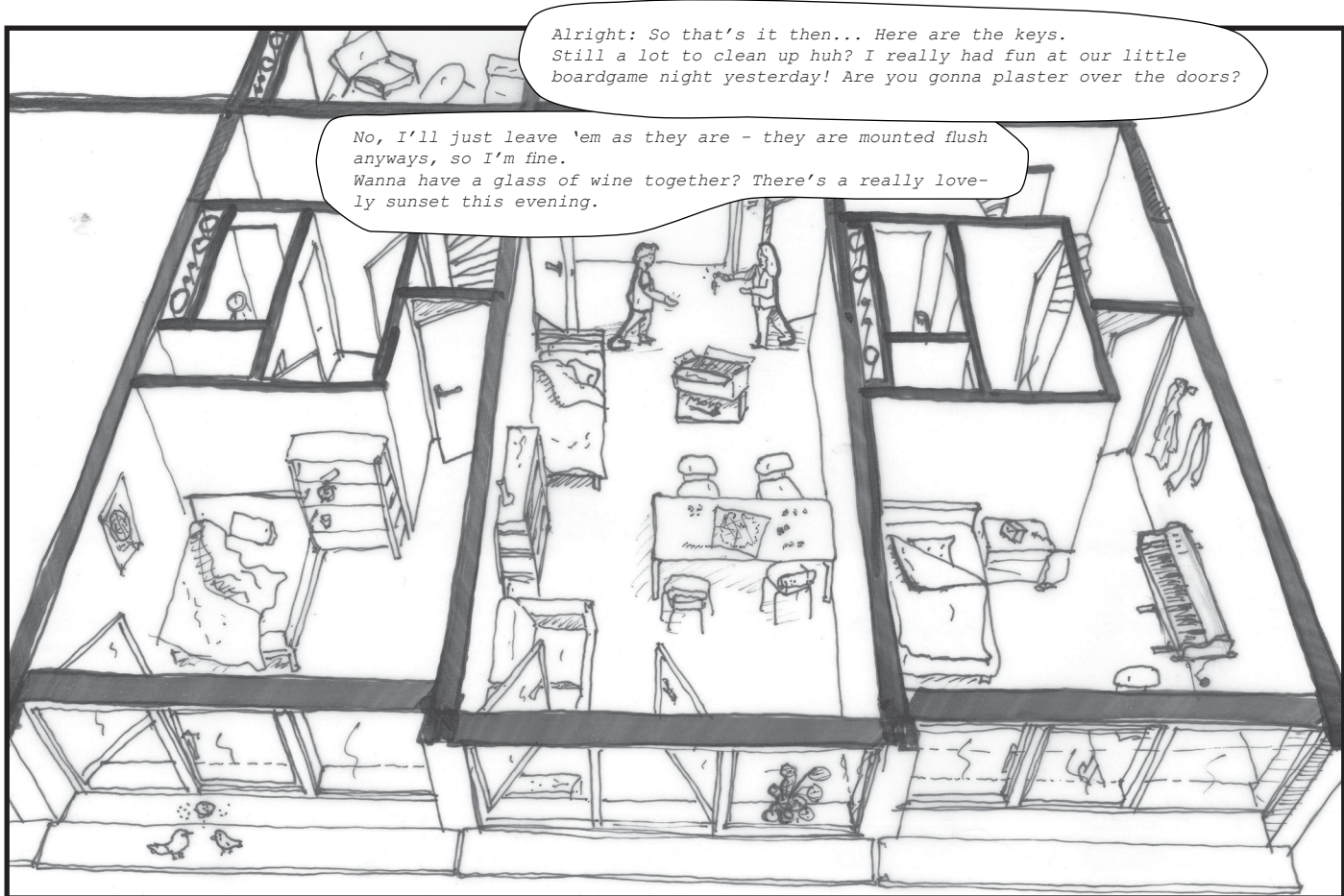




1



2



Alright: So that's it then... Here are the keys. Still a lot to clean up huh? I really had fun at our little boardgame night yesterday! Are you gonna plaster over the doors?

No, I'll just leave 'em as they are - they are mounted flush anyways, so I'm fine. Wanna have a glass of wine together? There's a really lovely sunset this evening.



Good evening Eva and Fred. I've cleaned out all my stuff out of our joker-room, - euh well I guess out of your home-office now haha.

Here's to a new chapter of a new home within familiar walls!

Cheers to that!