

Flexible and Adaptive Port Planning (PPT)

Case Study of Port of Isafjordur

Eskafi, Majid; Dastgheib, Ali; Taneja, Poonam; Ulfarsson, Gudmundur F.; Stefansson, Gunnar; Thorarinsdottir, Ragnheidur I.

Publication date

2018

Document Version

Accepted author manuscript

Citation (APA)

Eskafi, M., Dastgheib, A., Taneja, P., Ulfarsson, G. F., Stefansson, G., & Thorarinsdottir, R. I. (2018). *Flexible and Adaptive Port Planning (PPT): Case Study of Port of Isafjordur*. CoastGIS 2018 , Isafjordur, Iceland.

Important note

To cite this publication, please use the final published version (if applicable).
Please check the document version above.

Copyright

Other than for strictly personal use, it is not permitted to download, forward or distribute the text or part of it, without the consent of the author(s) and/or copyright holder(s), unless the work is under an open content license such as Creative Commons.

Takedown policy

Please contact us and provide details if you believe this document breaches copyrights.
We will remove access to the work immediately and investigate your claim.

Flexible and Adaptive Port Planning, Case Study of the Port of Isafjordur

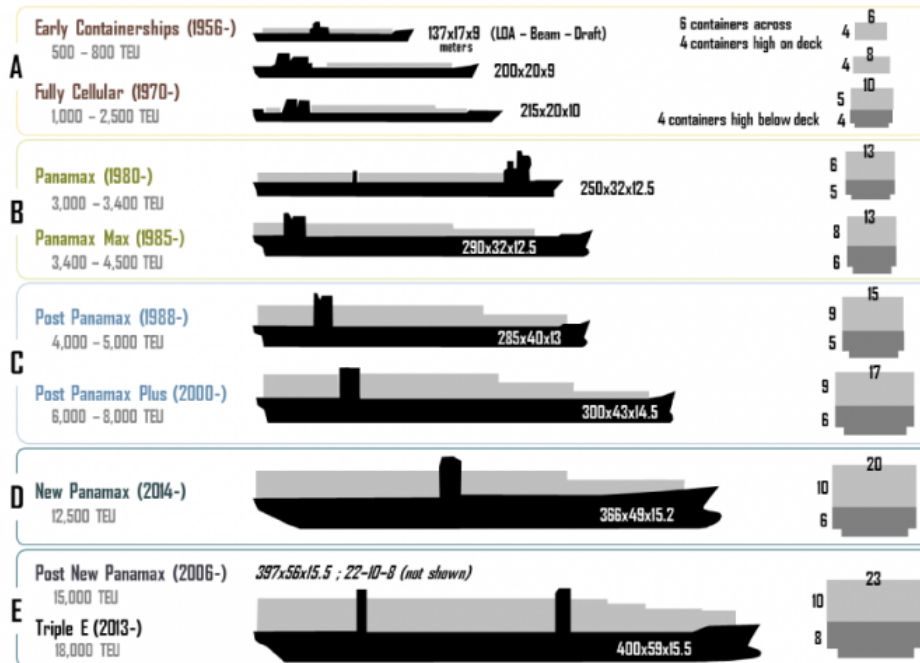
**Majid Eskafi, Ali Dastgheib, Poonam Taneja, Guðmundur Freyr Úlfarsson,
Gunnar Stefánsson, Ragnheiður Inga Þórarinsdóttir**

Harpa, Reykjavik, Iceland

October, 2018

Port Planning and The Traditional Practice

- Cargo Flow Forecast
- Shipping Forecast
- Technical (design) Lifetime of the Port Infrastructures is 25-50-100 years



Uncertainties

Institutional	Political	Technological	Legal	Others
Environmental	National	Local	Commercial	Social
International	Demographic	Black Swan	Standards*	Economics
Ecological	Regulatory	Market	Regional	Global

Technology

- Port of Rotterdam

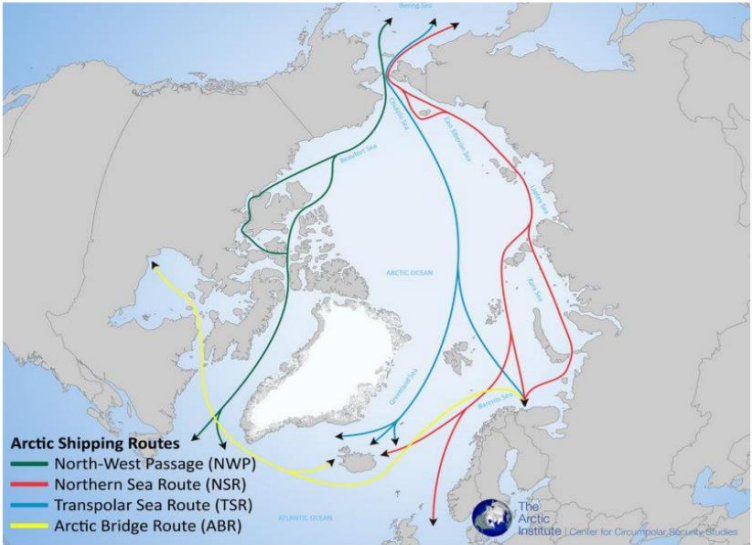
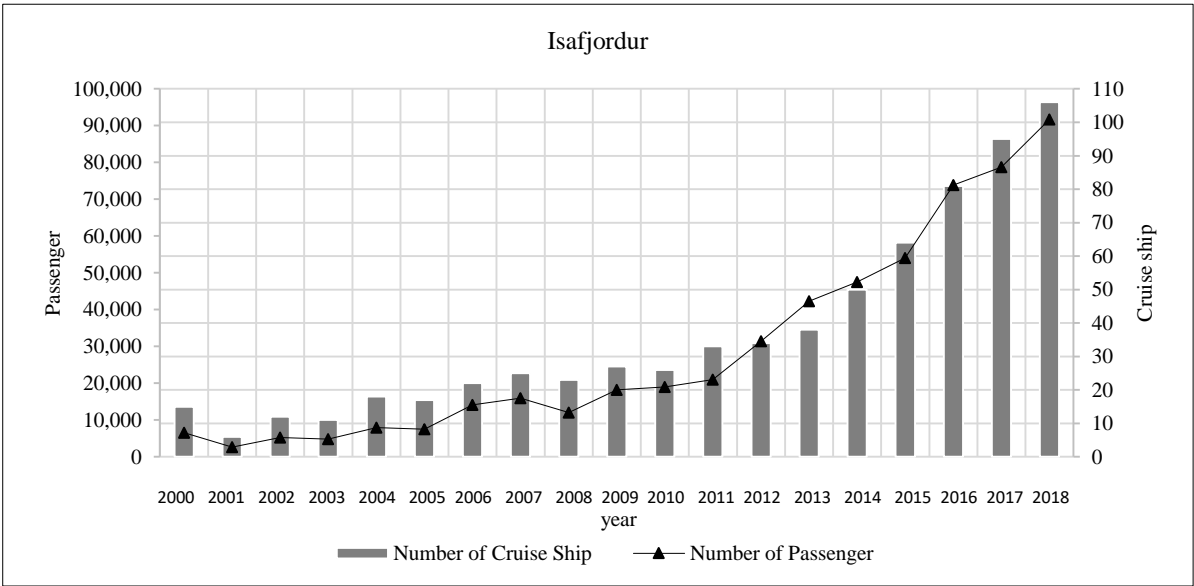
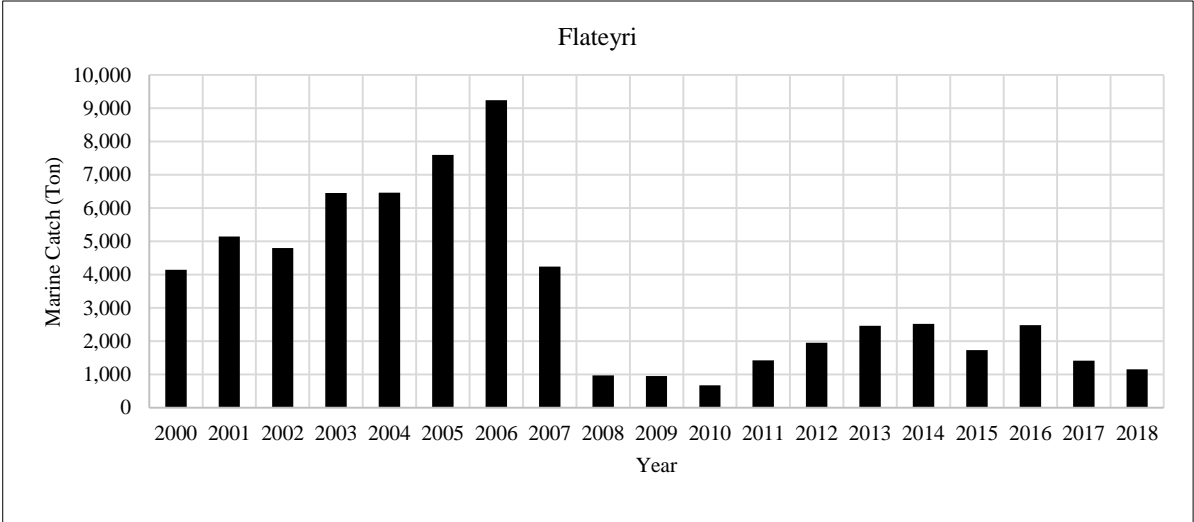


Area of Study

- Hafnir Ísafjarðarbæjar



Uncertainties

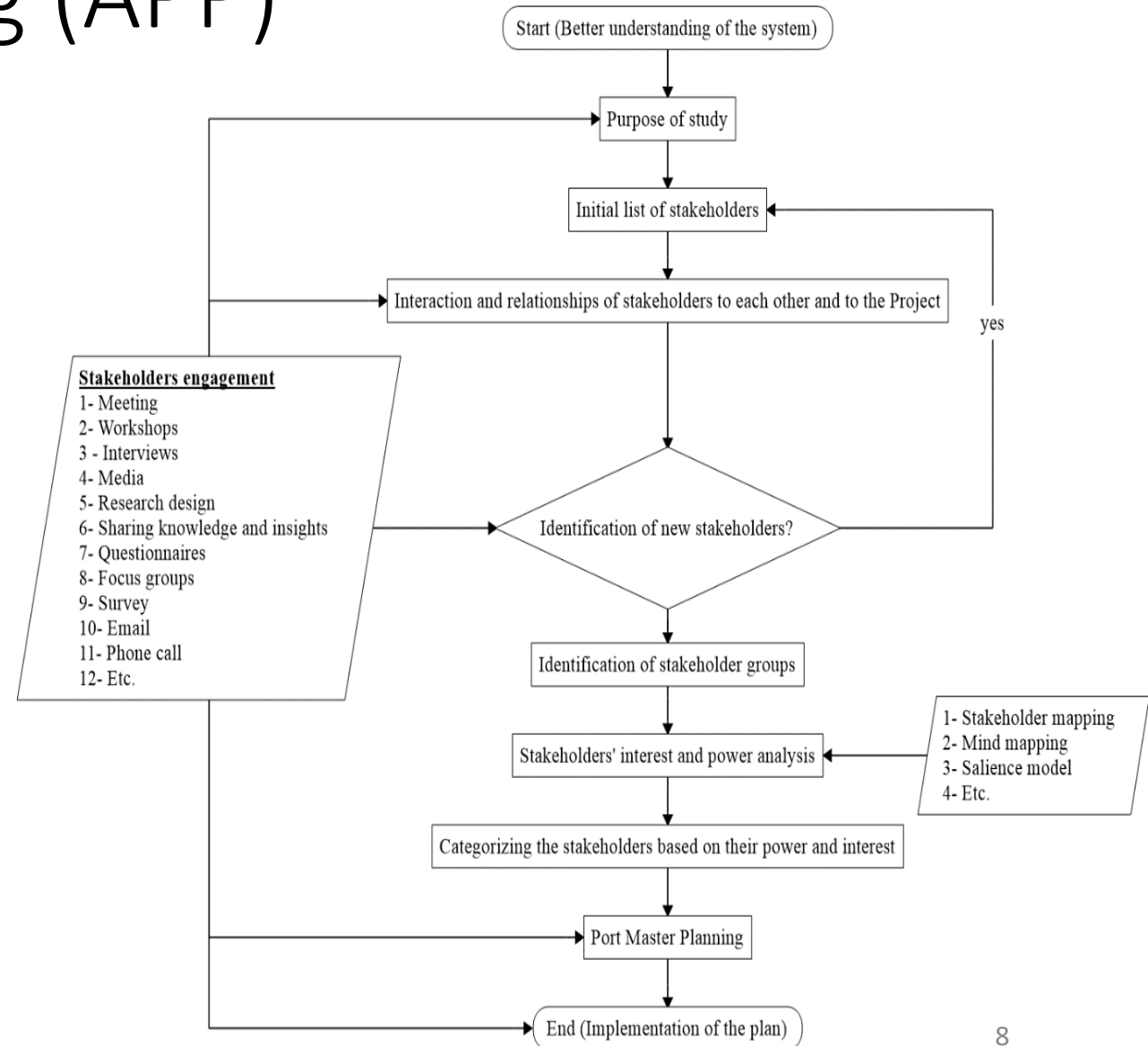


Adaptive Port Planning (APP)

- ([P. Taneja, 2013](#)) The flexible port
- “... a port with the capability to change so as to be functional under new, different, or changing requirements...” by means of minimal additional investment while maintaining overall levels of efficiency, reliability and quality of service.

Adaptive Port Planning (APP)

- First Step (Definition of Success)



Adaptive Port Planning (APP)

Stakeholder Groups

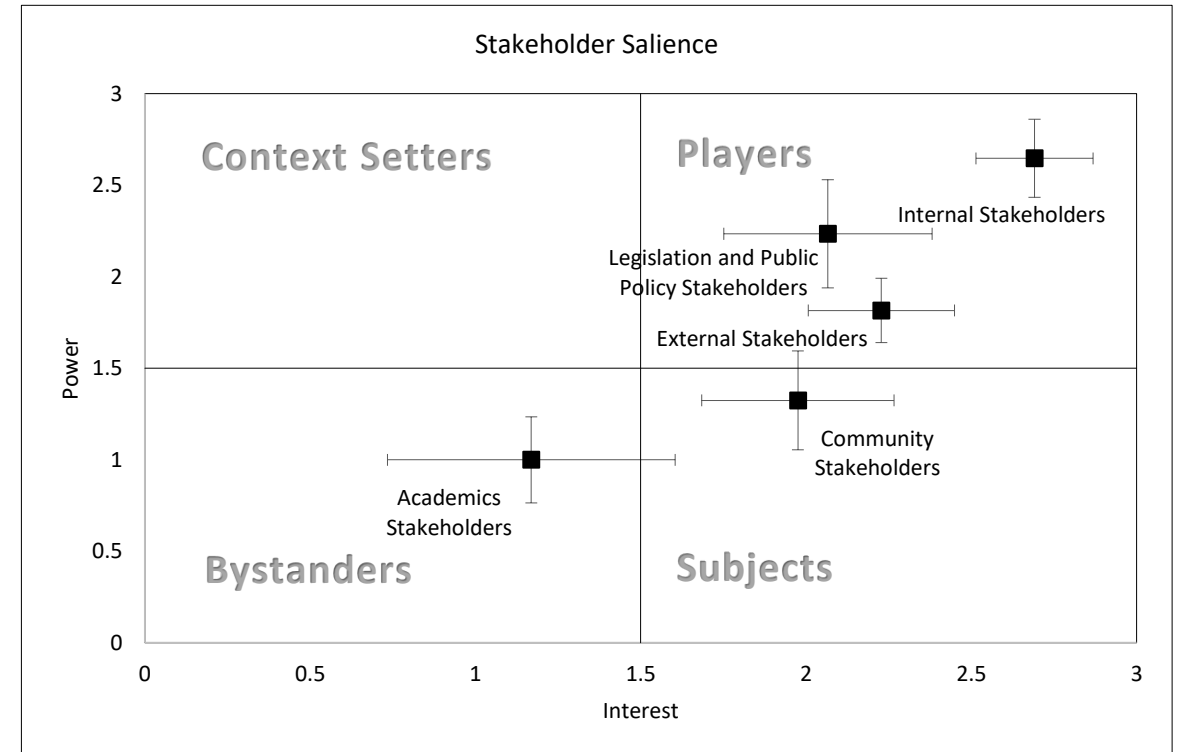
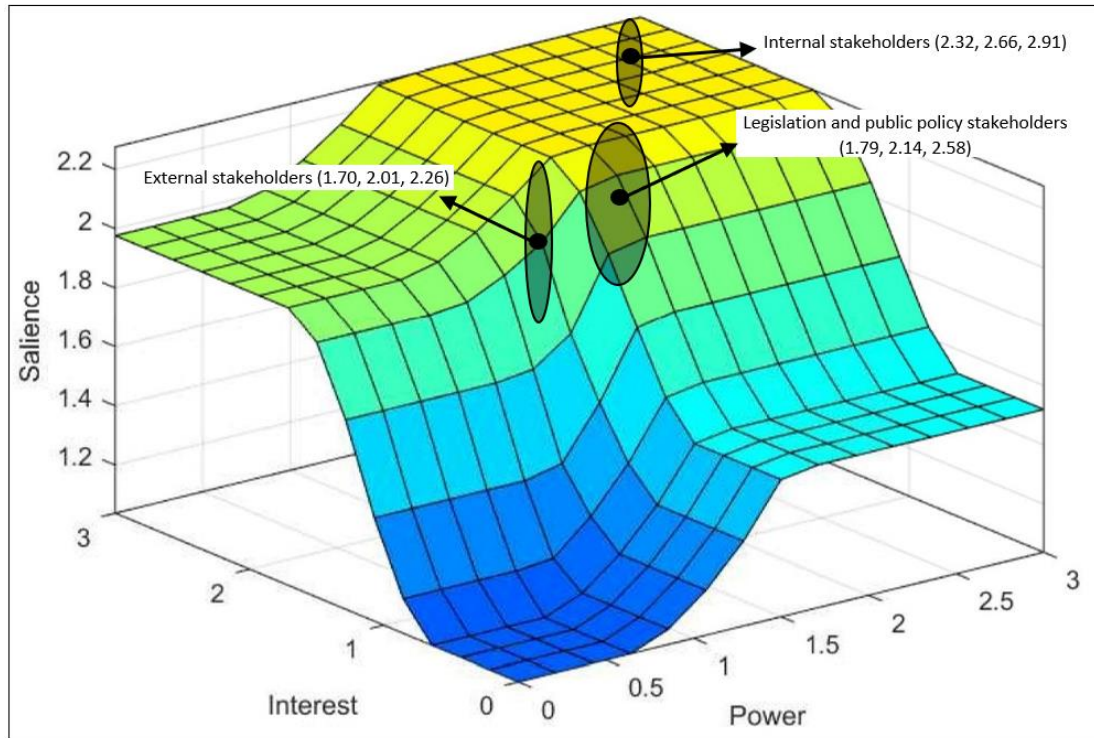
1- Internal stakeholders, 2- External stakeholders, 3- Legislative and public policy stakeholders, 4- Community stakeholders, and 5- Academic stakeholders

Criteria of Port Planning

1- Competitiveness, 2- Land use, 3- Safety and security, 4- Hinterland connectivity, 5- Flexibility, 6- Environmental implications, 7- Economic and social impacts, and 8- Financial performance

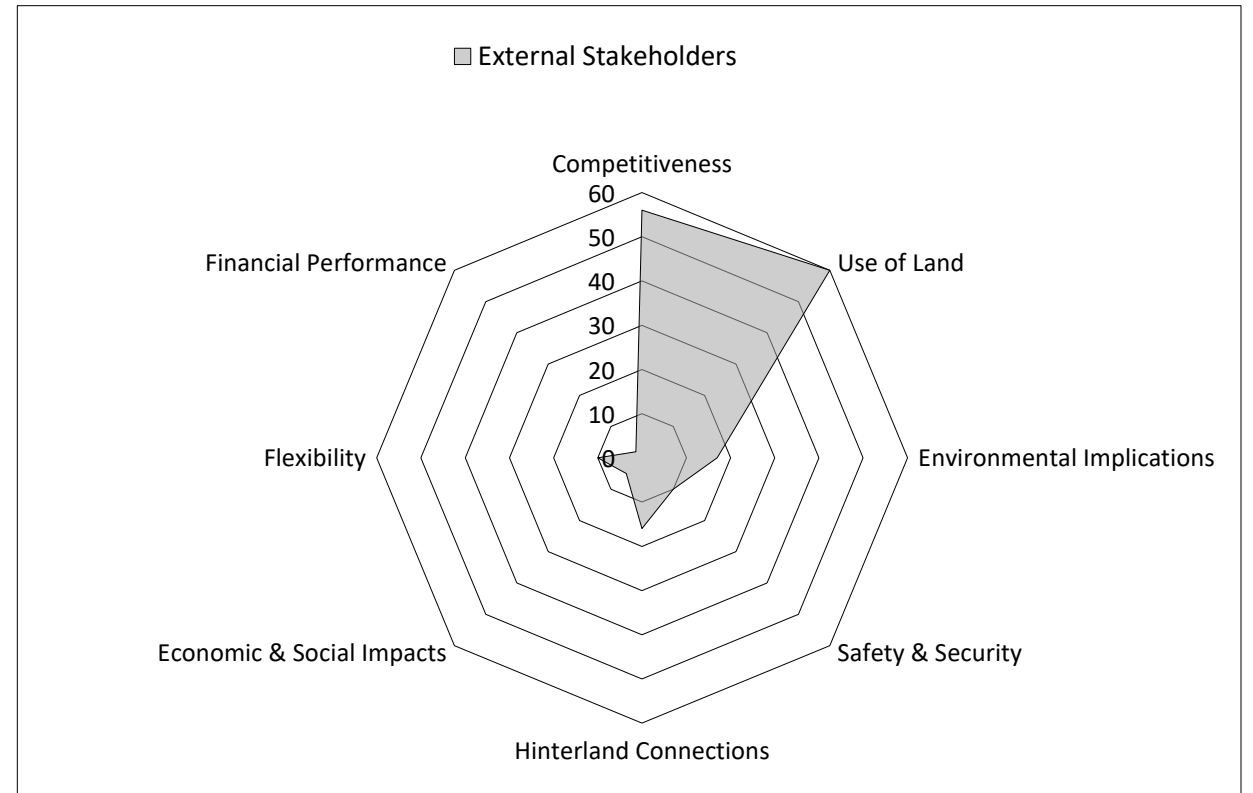
Adaptive Port Planning (APP)

- Stakeholder Mapping (2D & 3D)



Adaptive Port Planning (APP)

- Stakeholders Attribute



Adaptive Port Planning (APP)

- Definition of Success

Competitiveness



Use of Land





Thank you for your attention

“The best way to predict the future is to create it.”

([Abraham Lincoln](#) and [Peter Drucker](#))

Email: mae47@hi.is