



# Requiem



*To mom and dad, without whom none of this would be possible. I owe them the world and I hope my achievements can bring them pride and joy.*

*To my brother, who I have missed dearly in these years, but has never failed to be there for me even from afar.*

*To Michela, my strenght, my happiness, my inspiration and my support. I would not be the person I have become without you by my side every step of the way.*

*To my angel. I hope you can see me from above, or wherever you are. I hope I made you proud. I miss you.*

*To my grandad, the person I look up to the most and aspire to be one day.*

*To my friends, who have made these past two difficult years much more bearable and fun. A special mention to my dear Kat, thanks for backing me up during the long nights, the precious help and the laughs.*

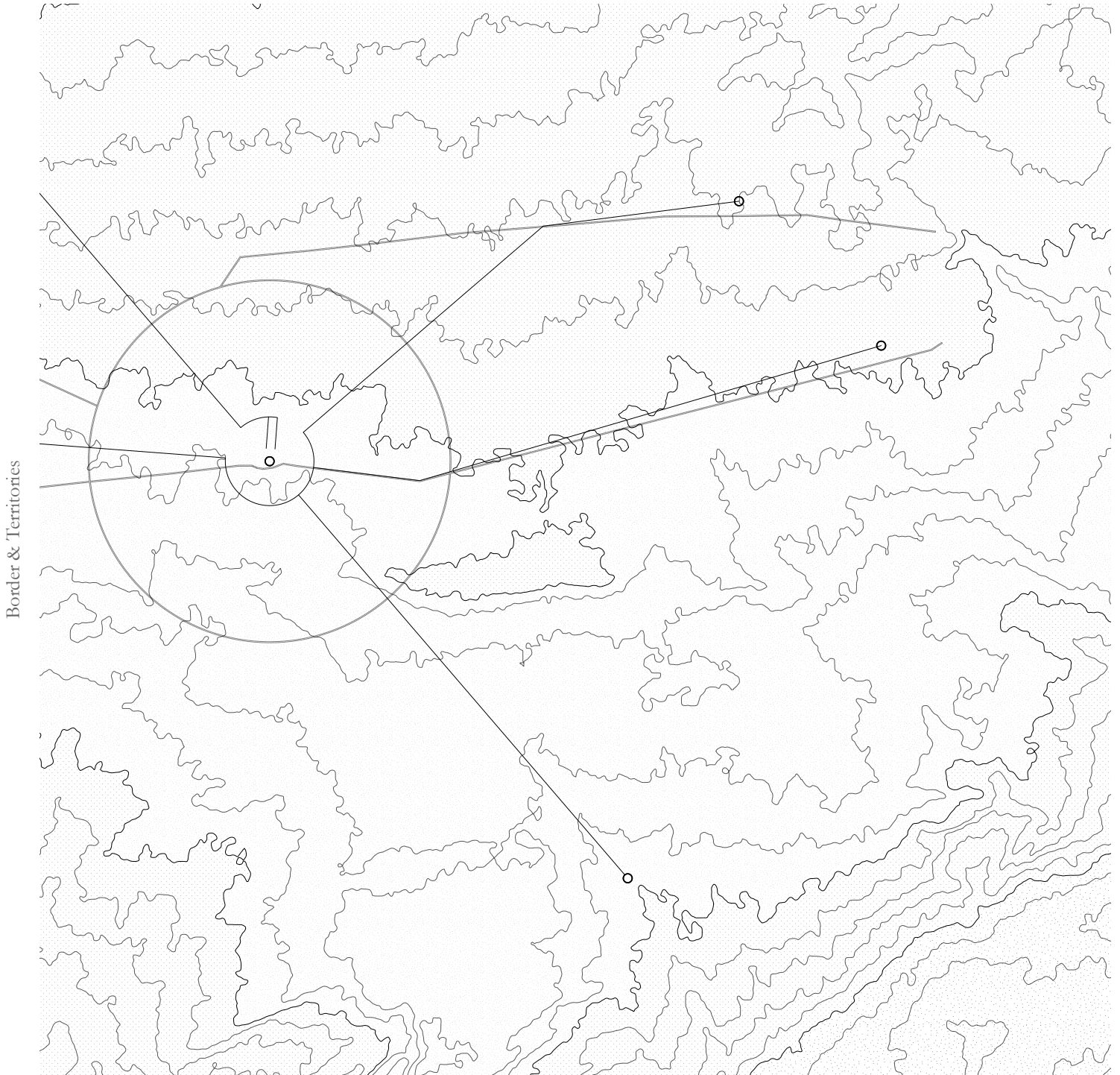
*To fellow students and people that I have met throughout these 7 long years of education and have inspired the architect that I ought to be.*



# Table of Contents

Compiled Drawing Set

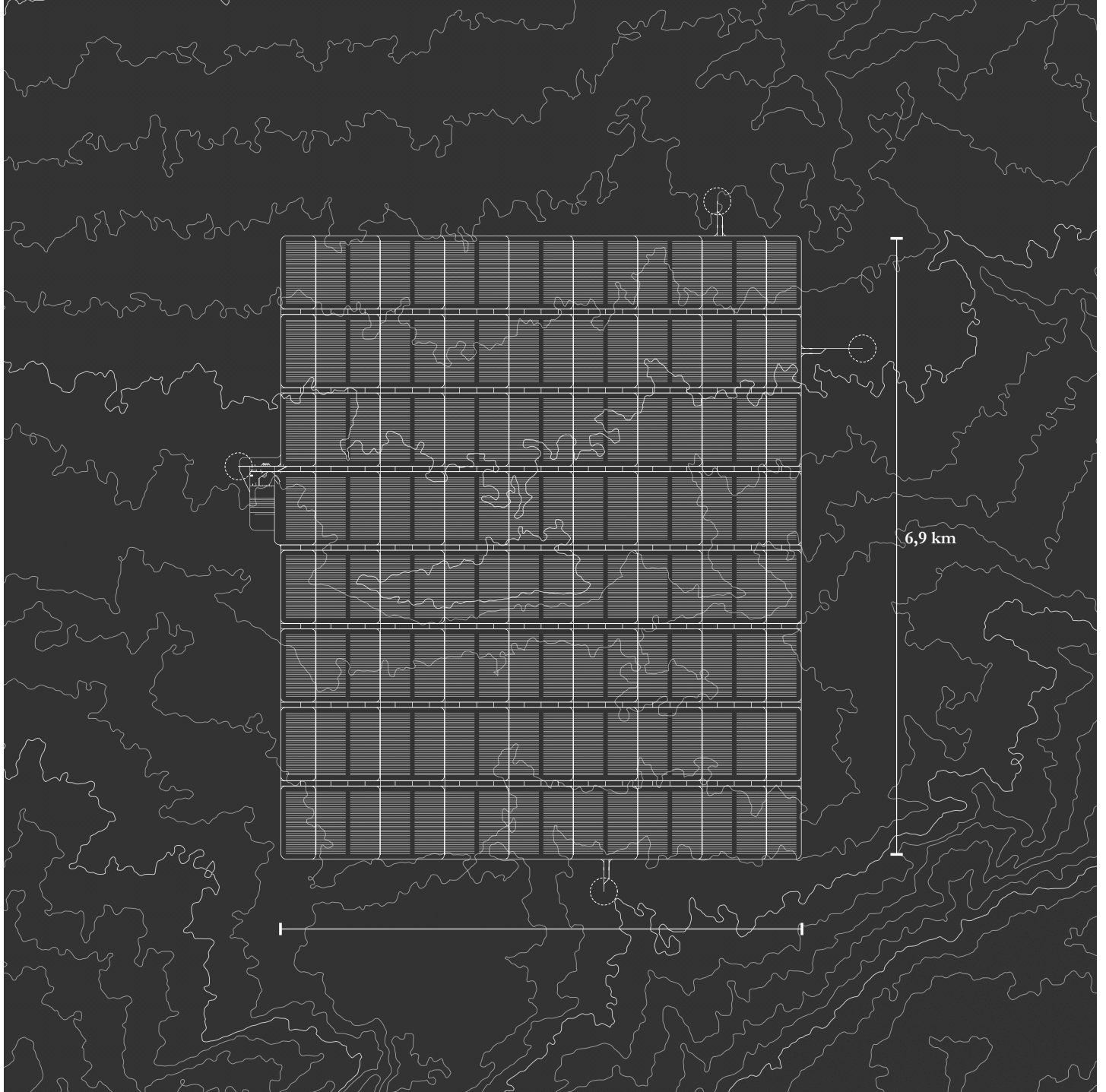




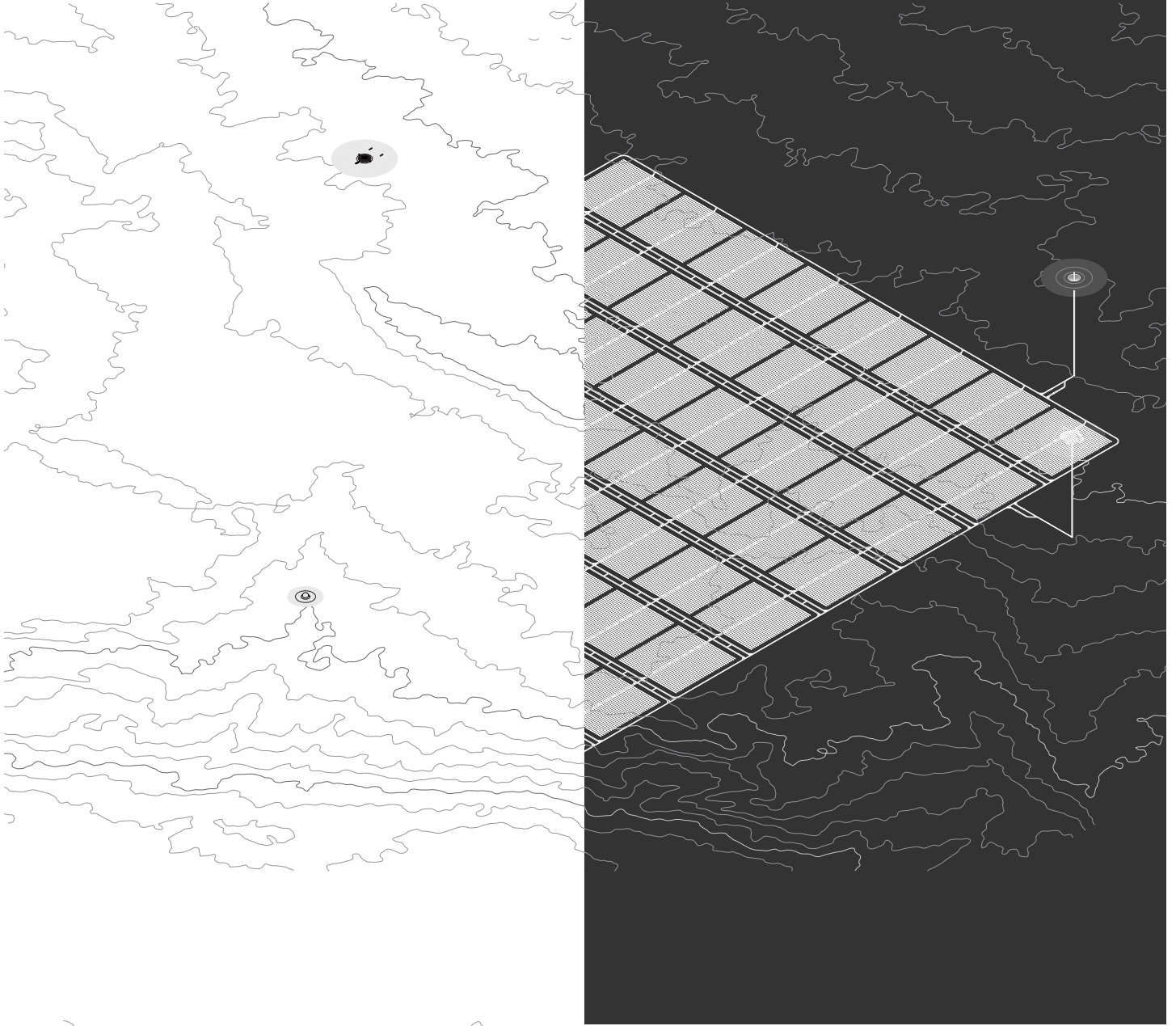
Border & Territories









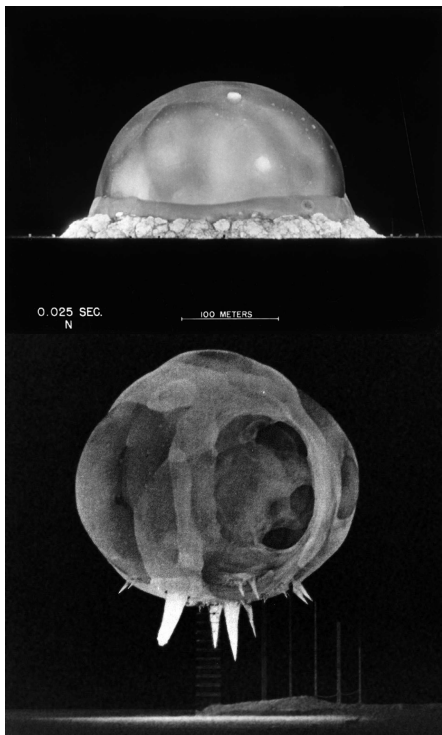








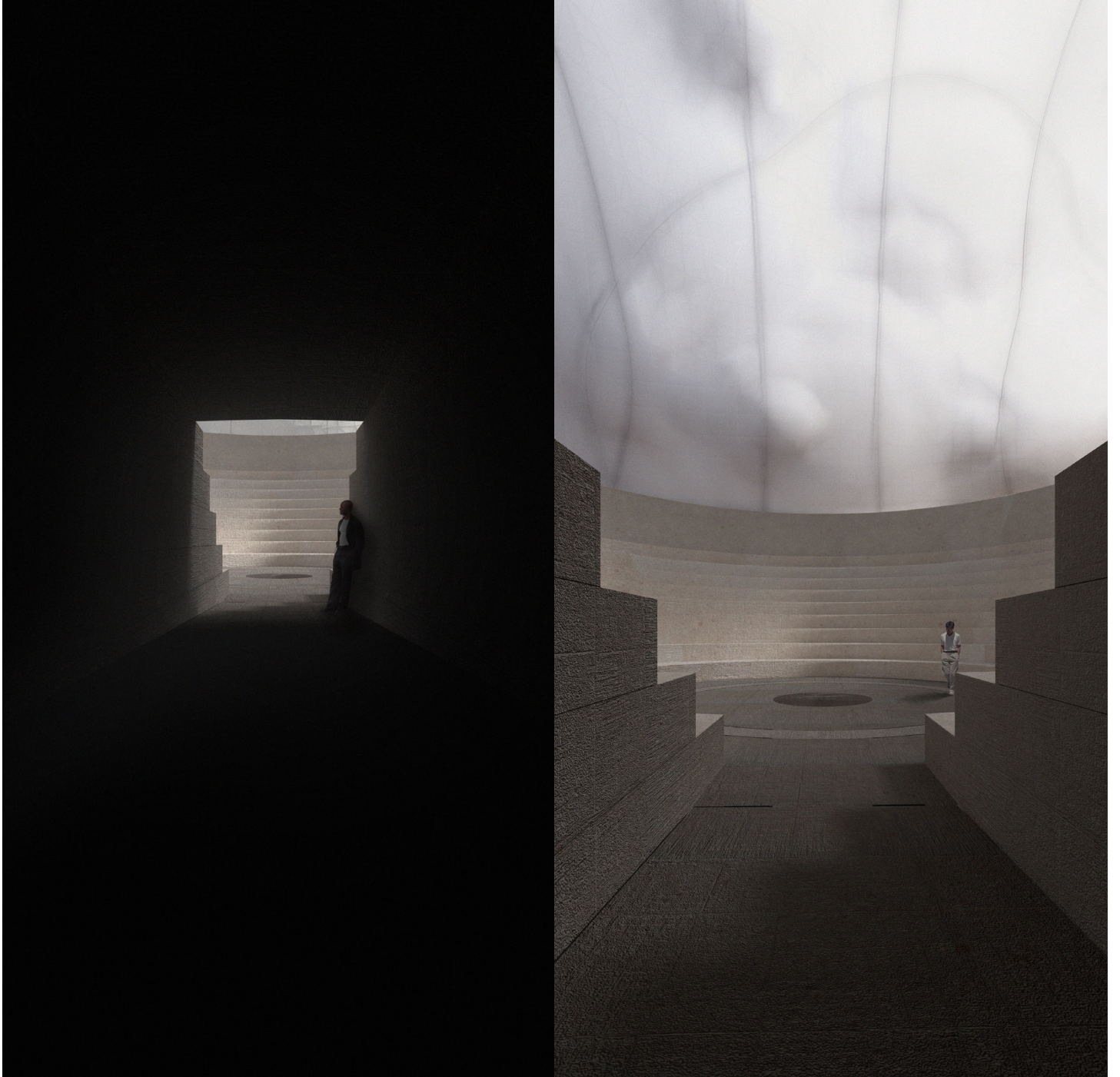




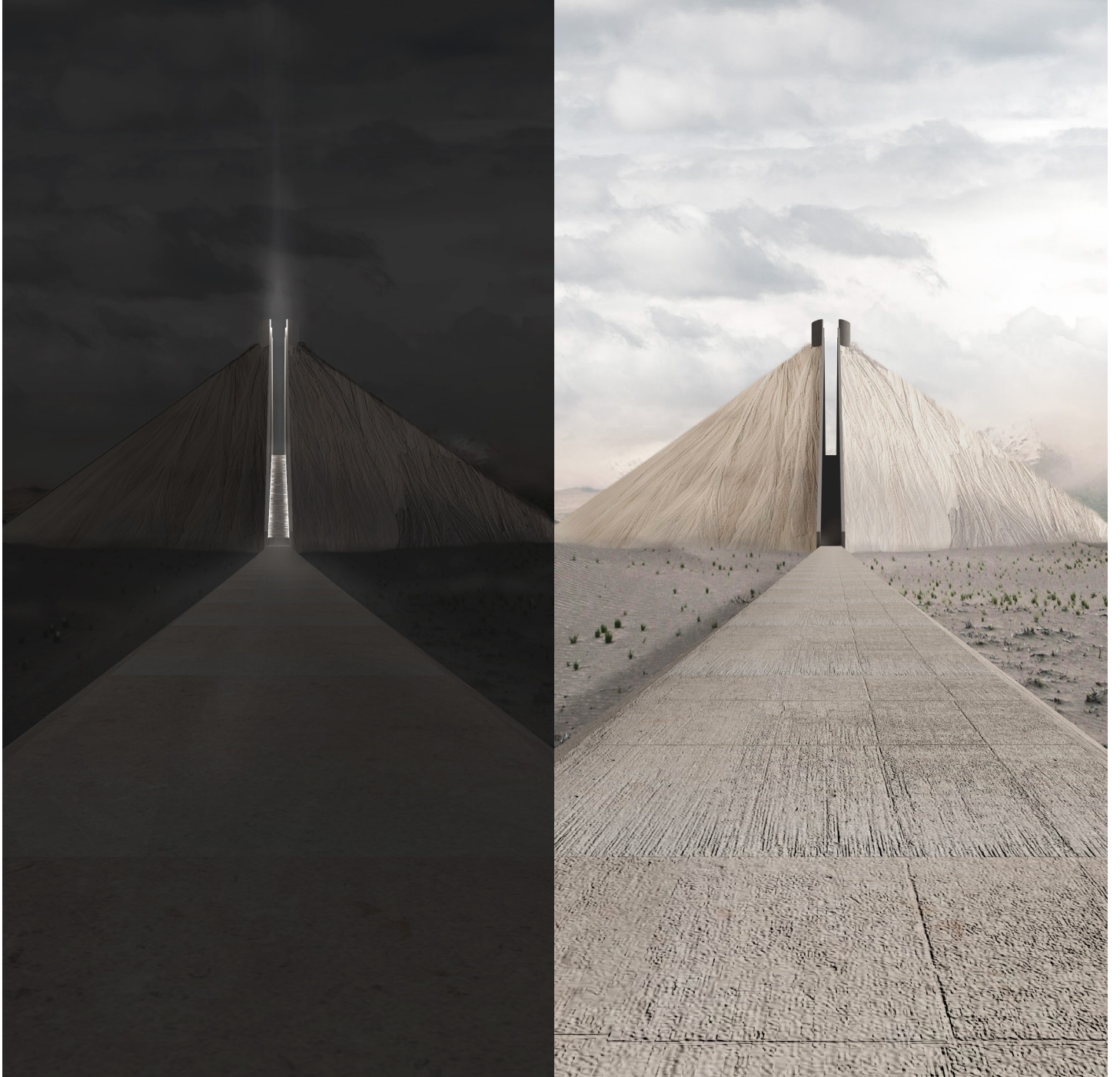
















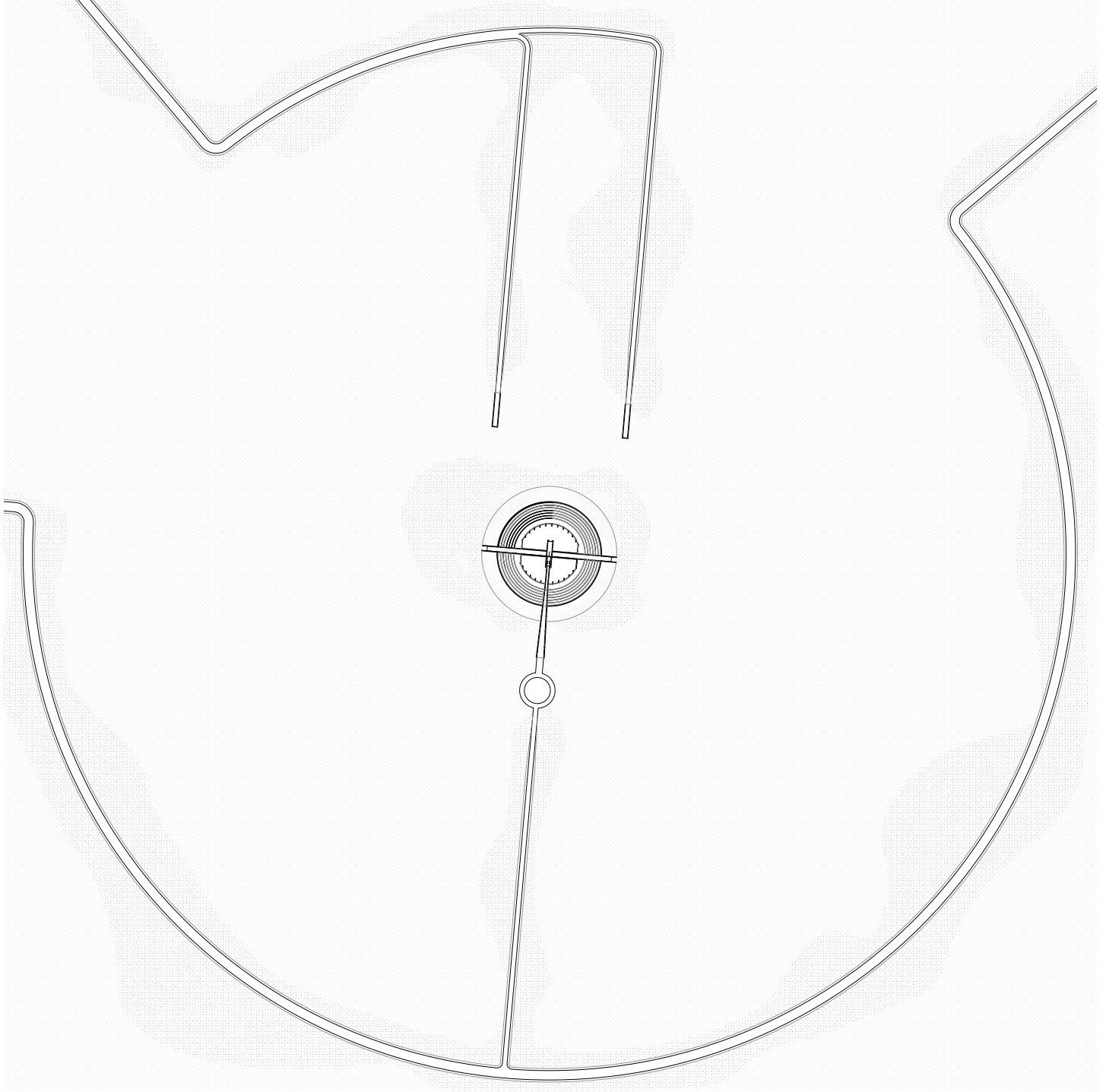






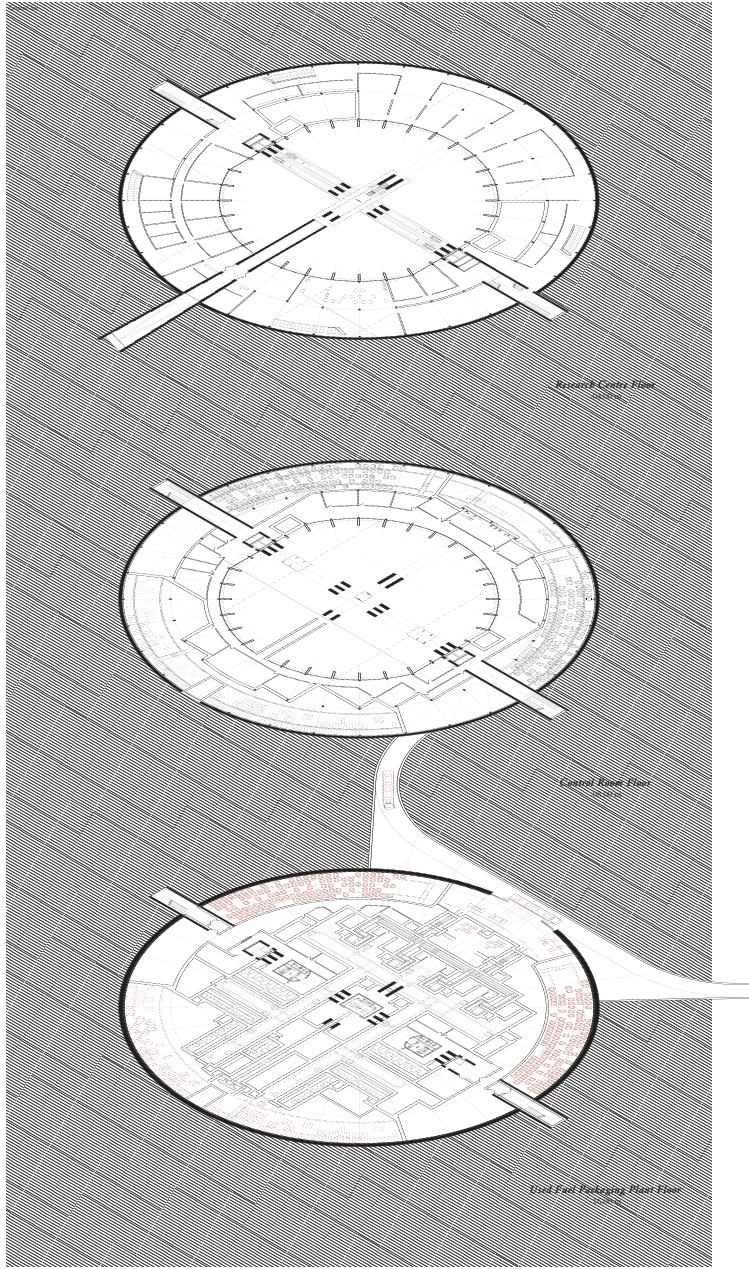
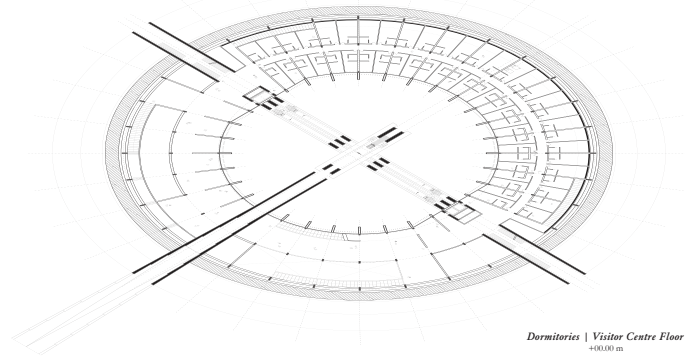
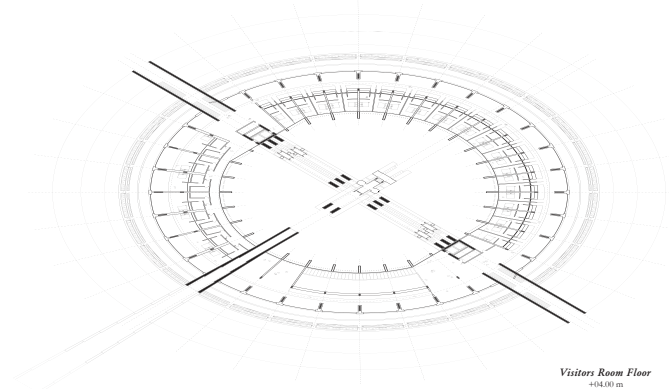


Border & Territories

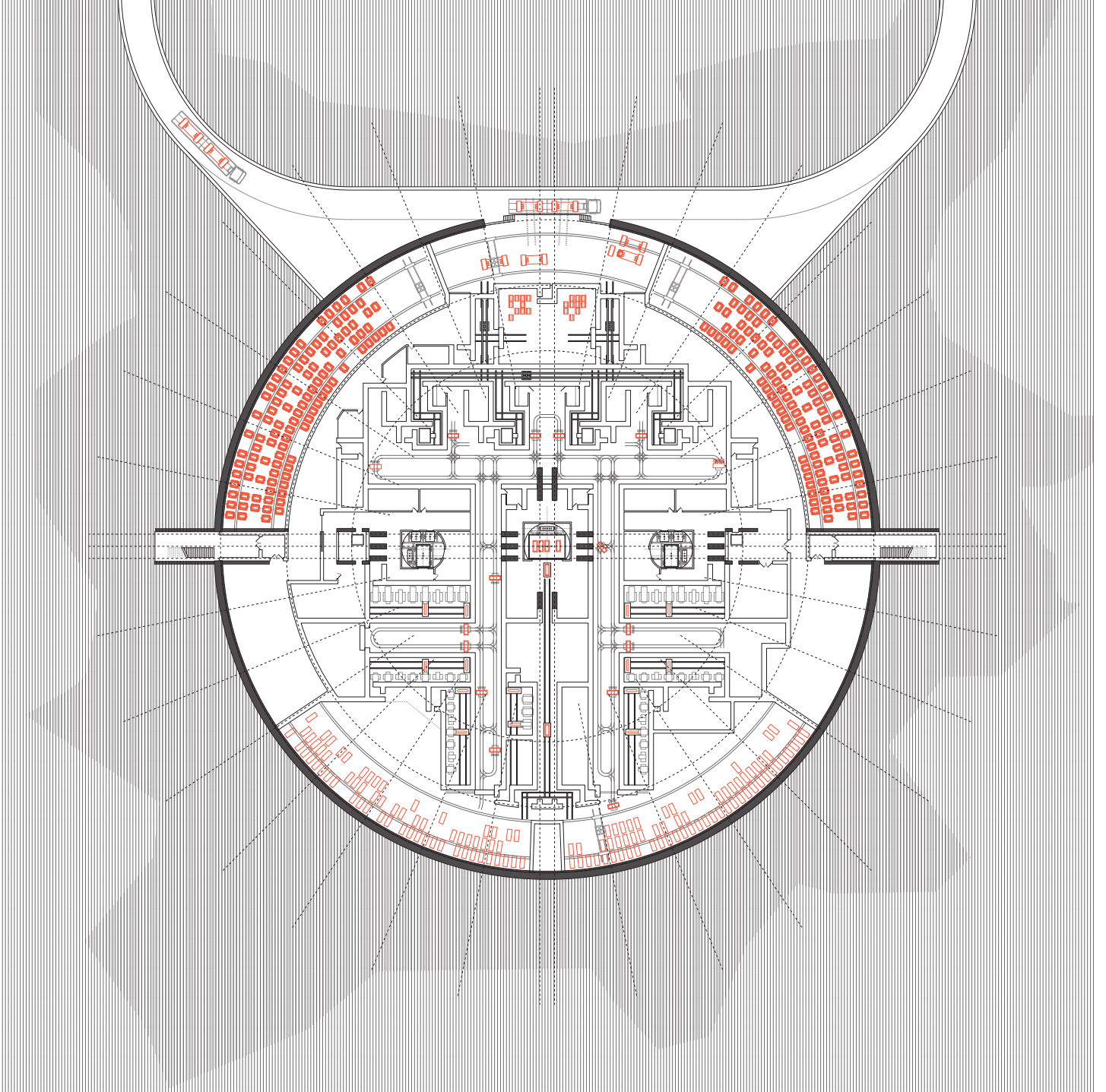




Requiem





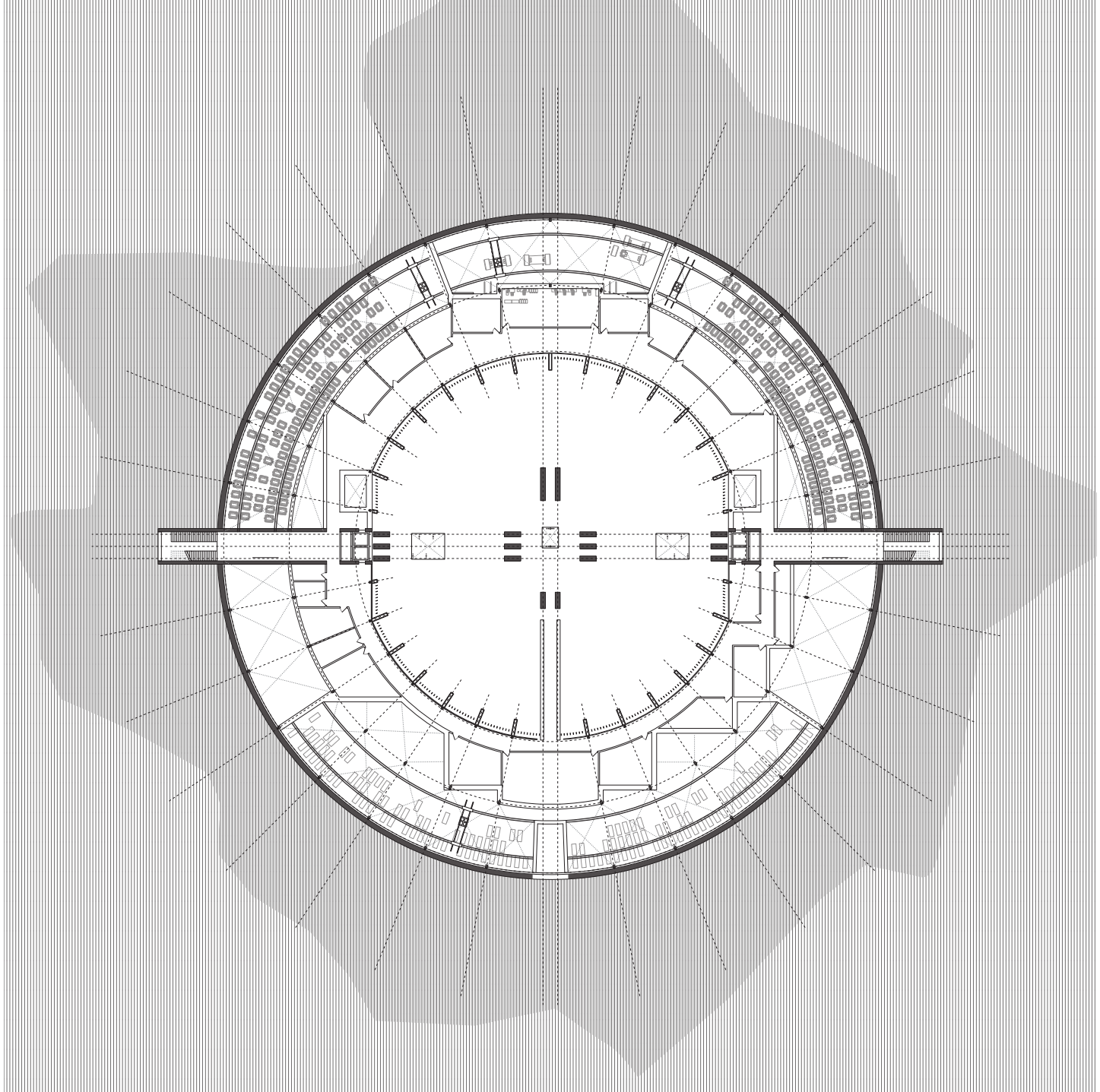




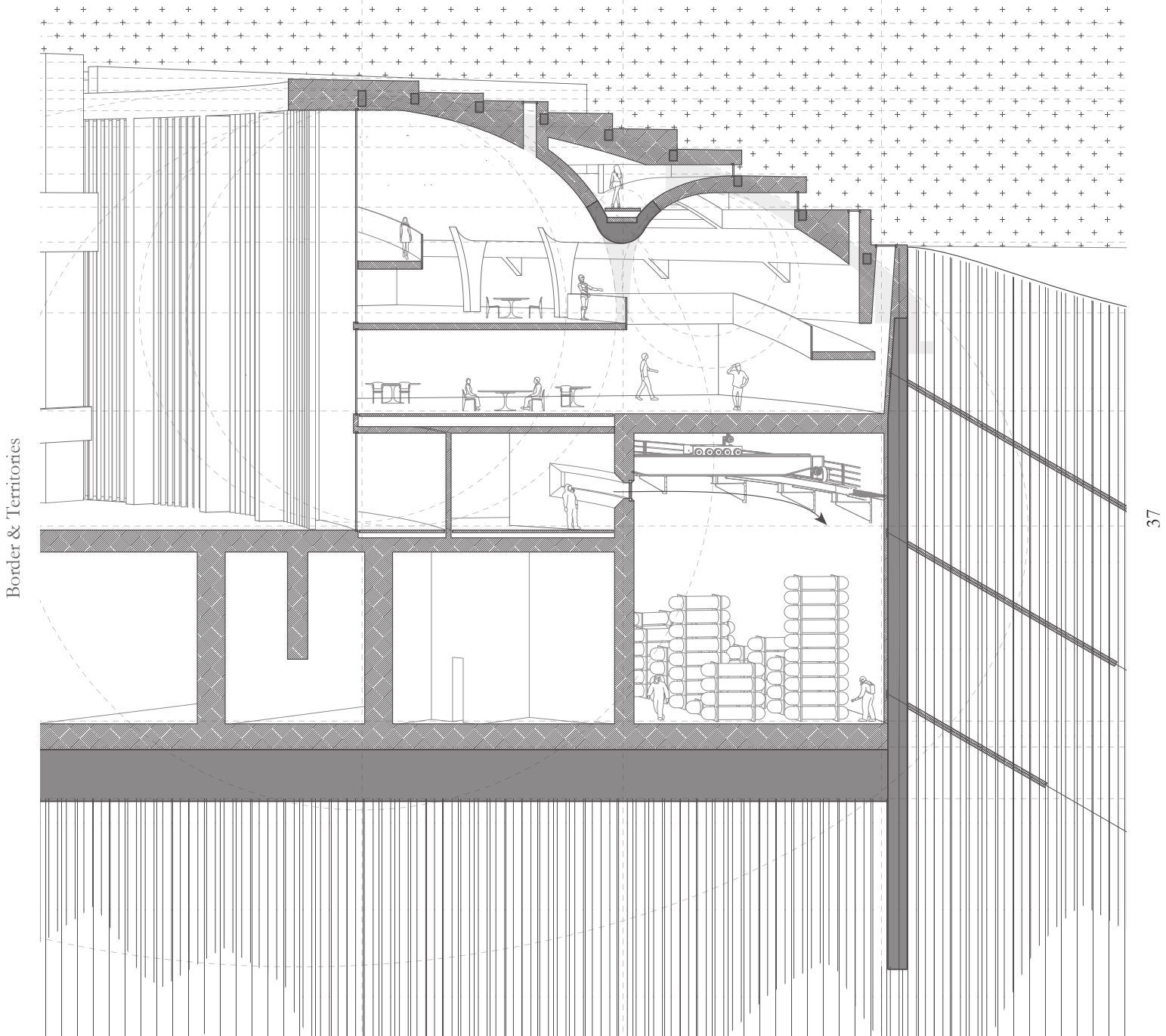




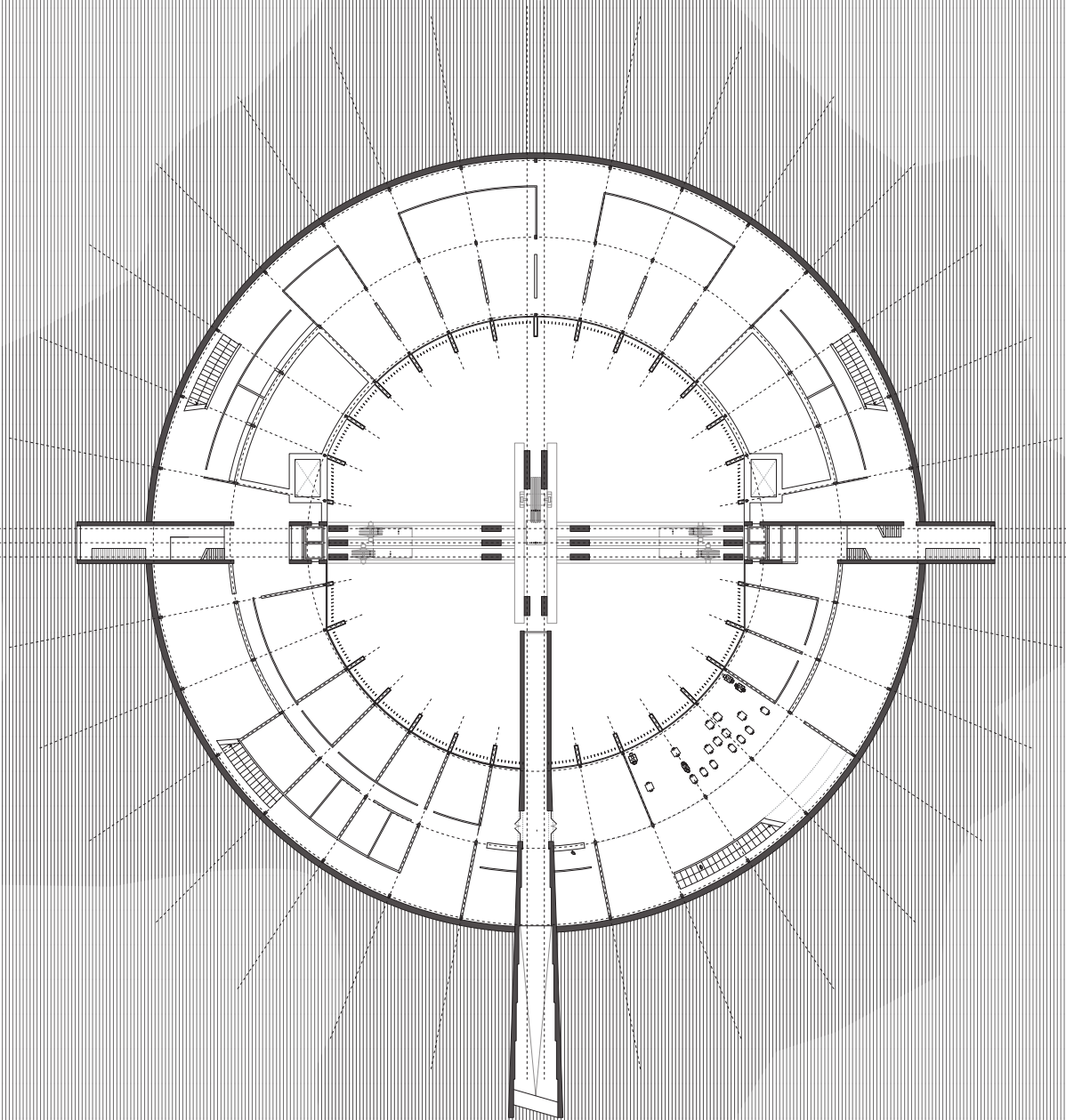






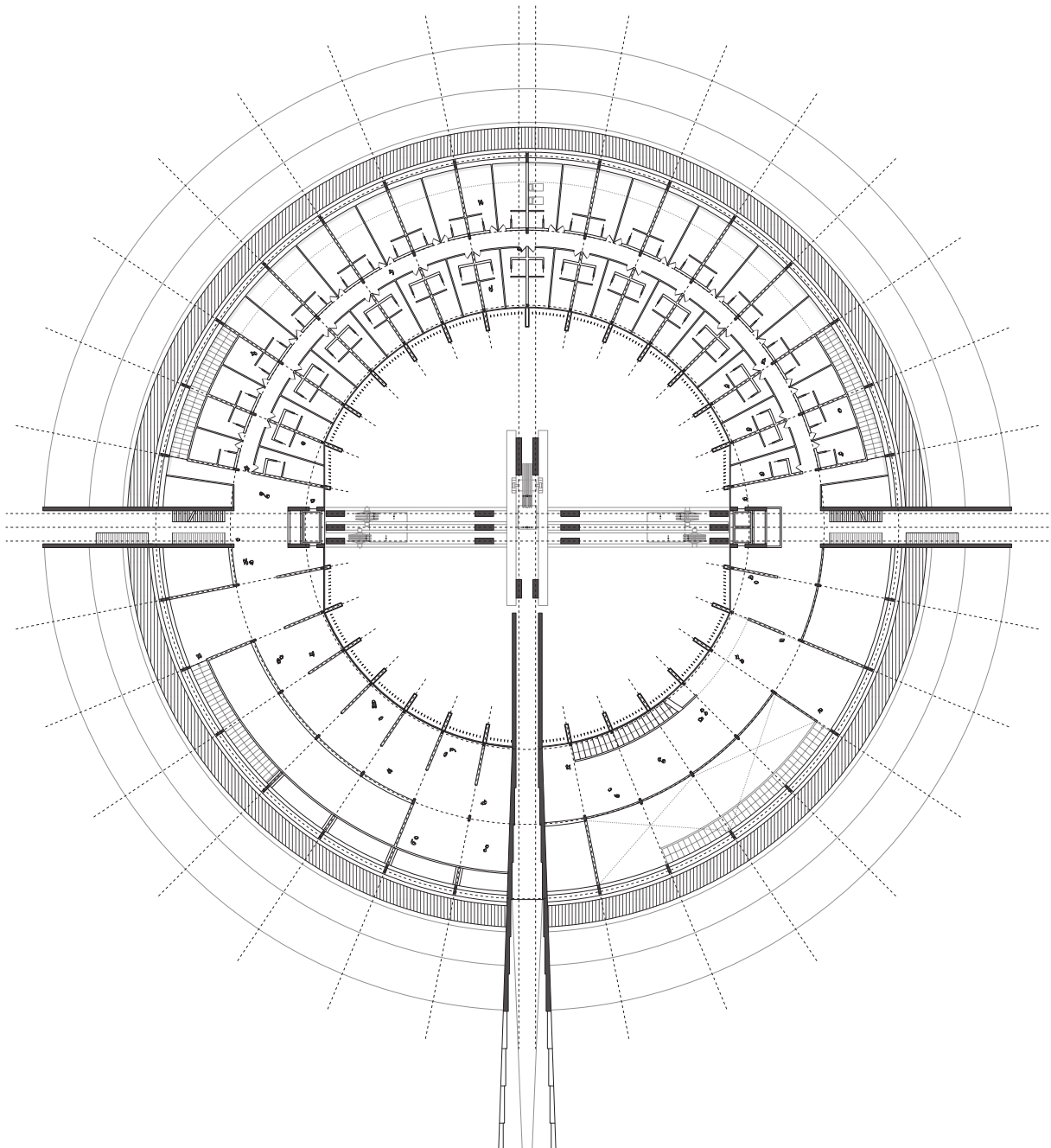




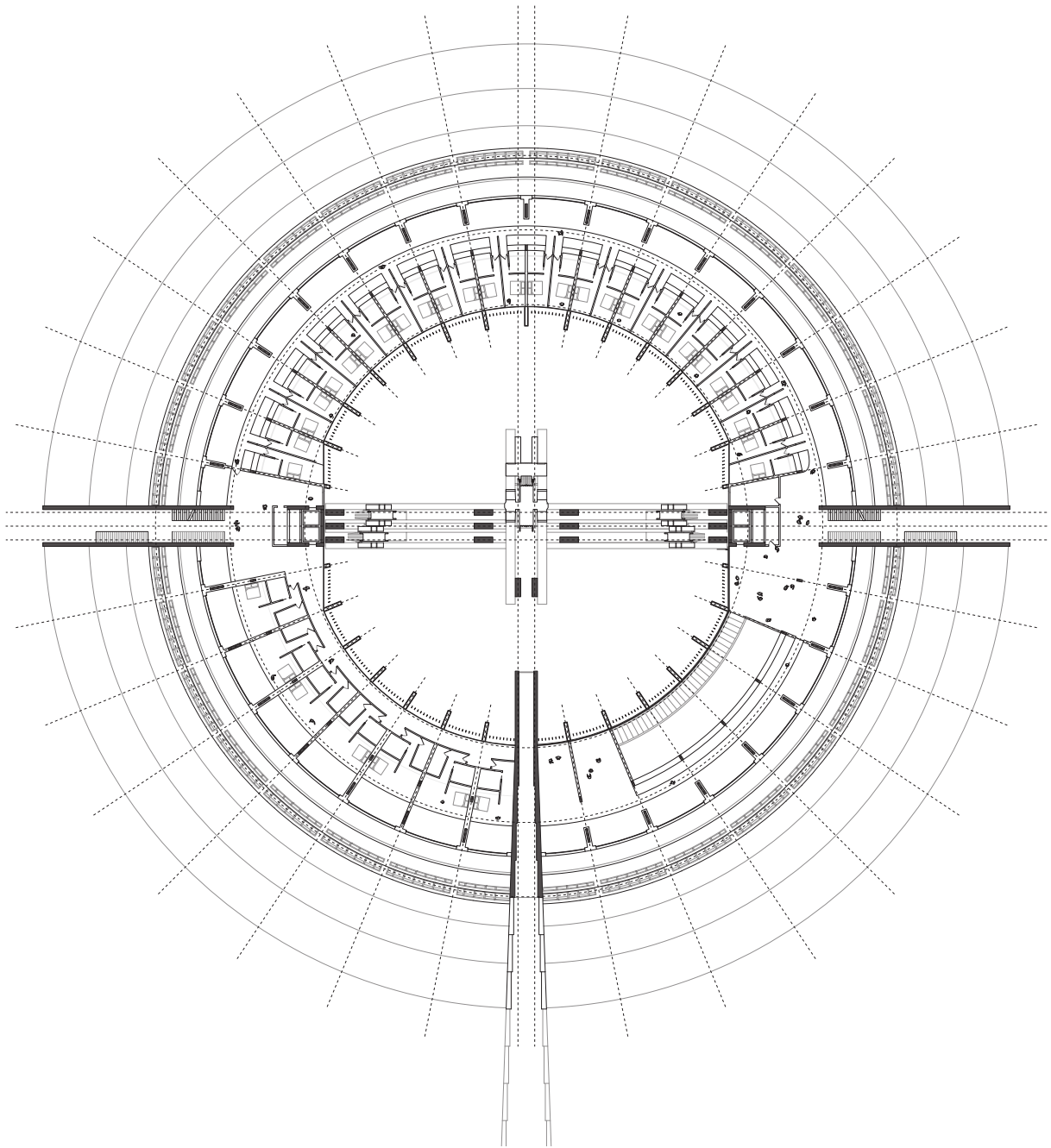




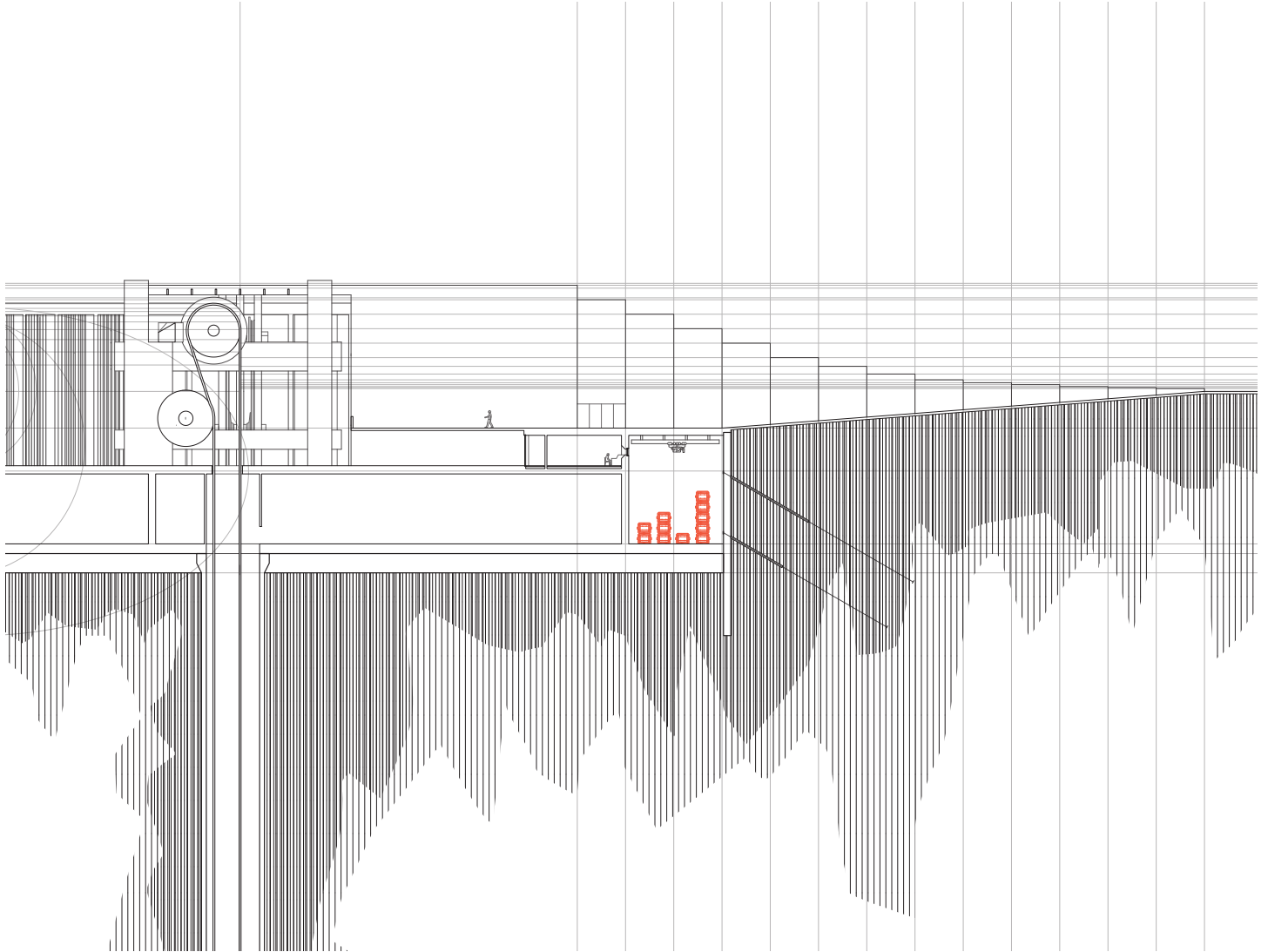




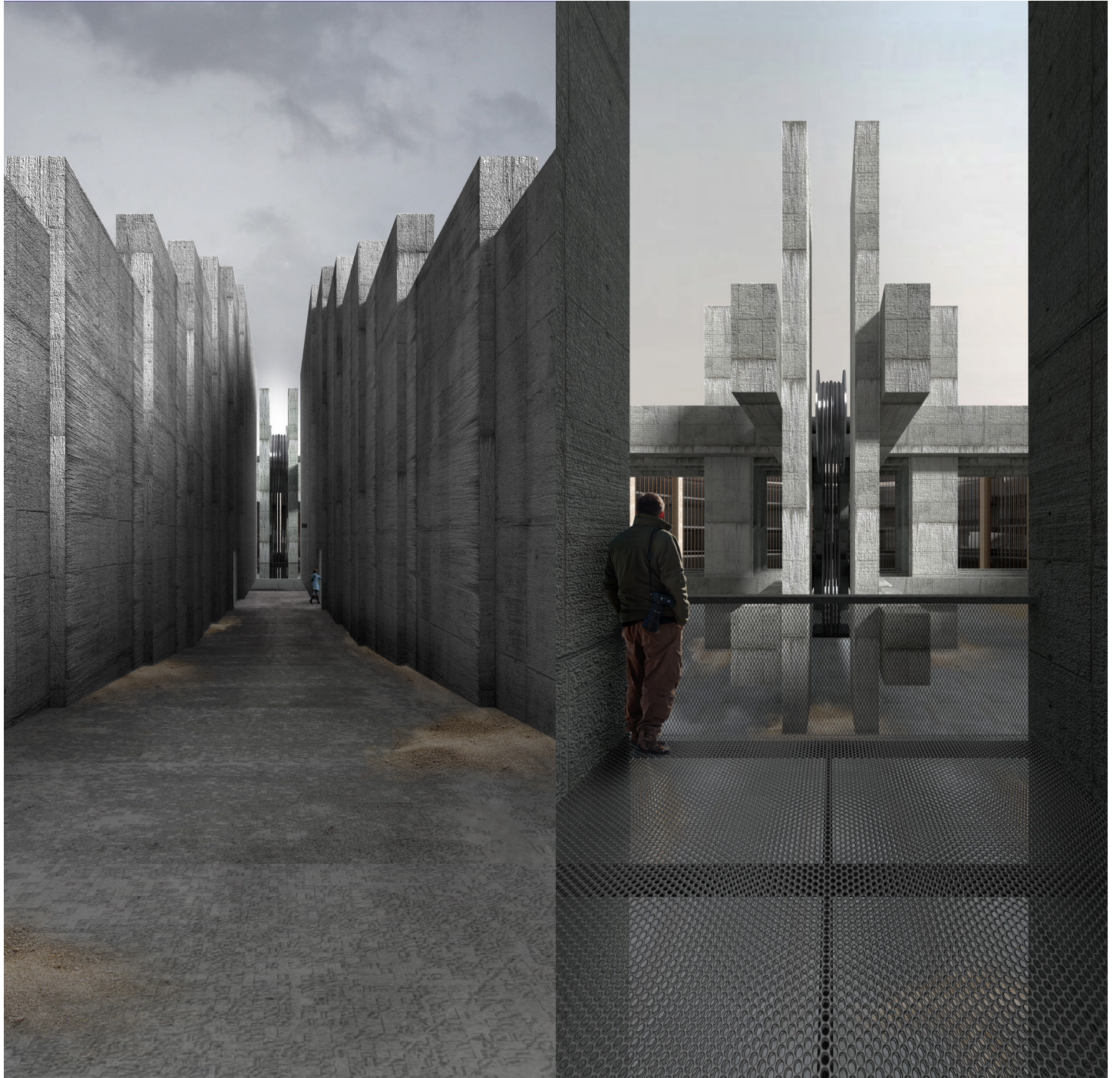






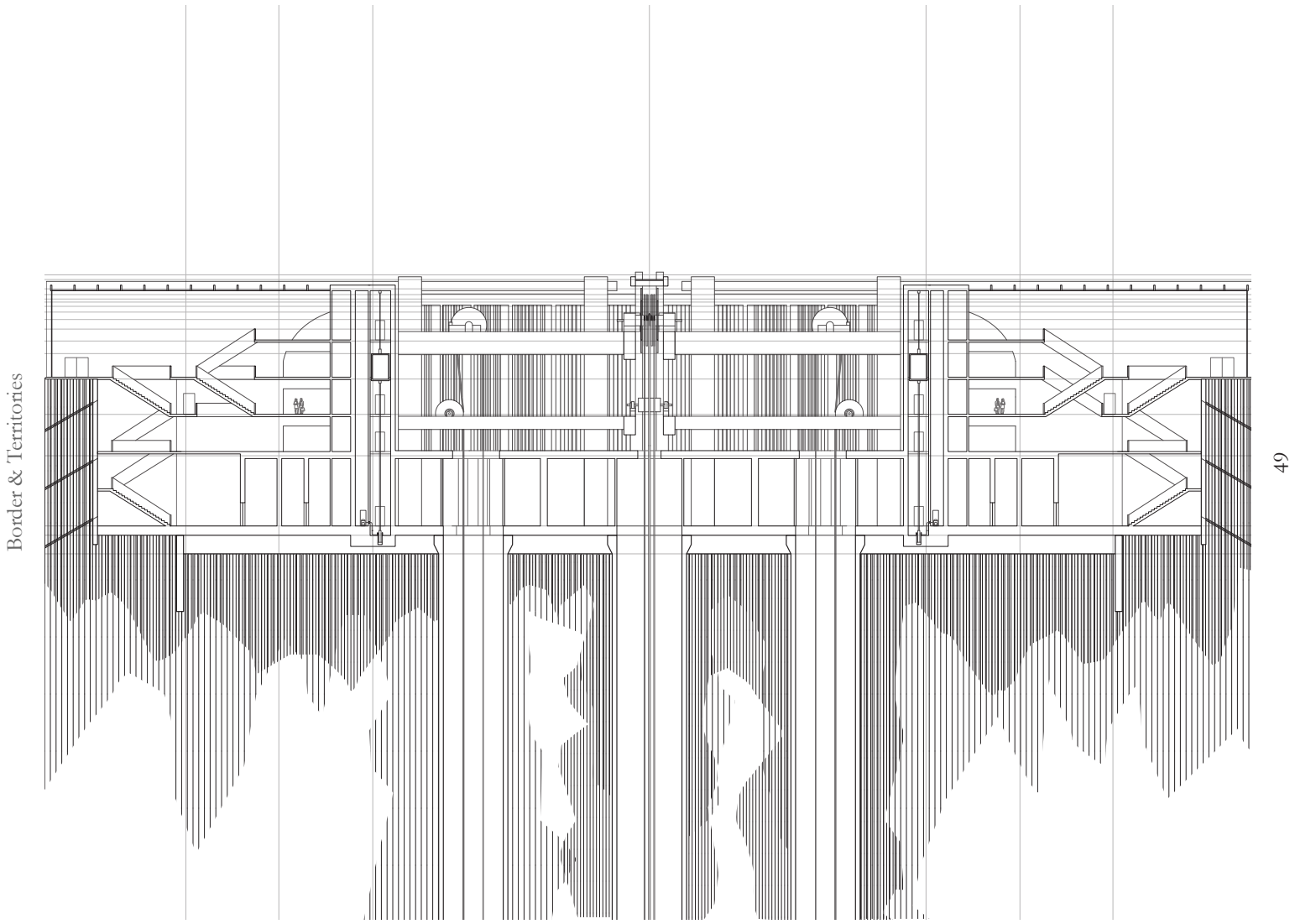






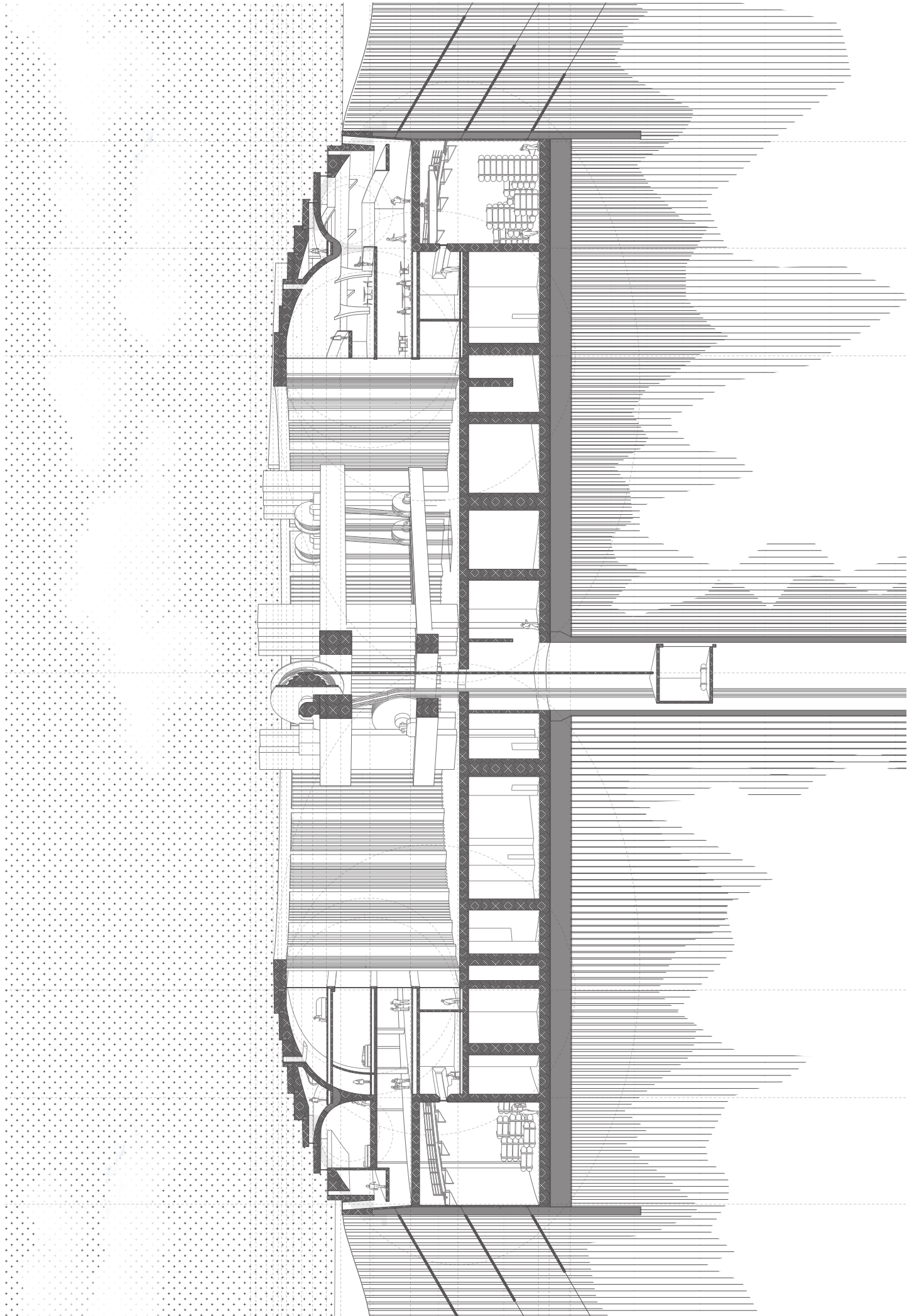




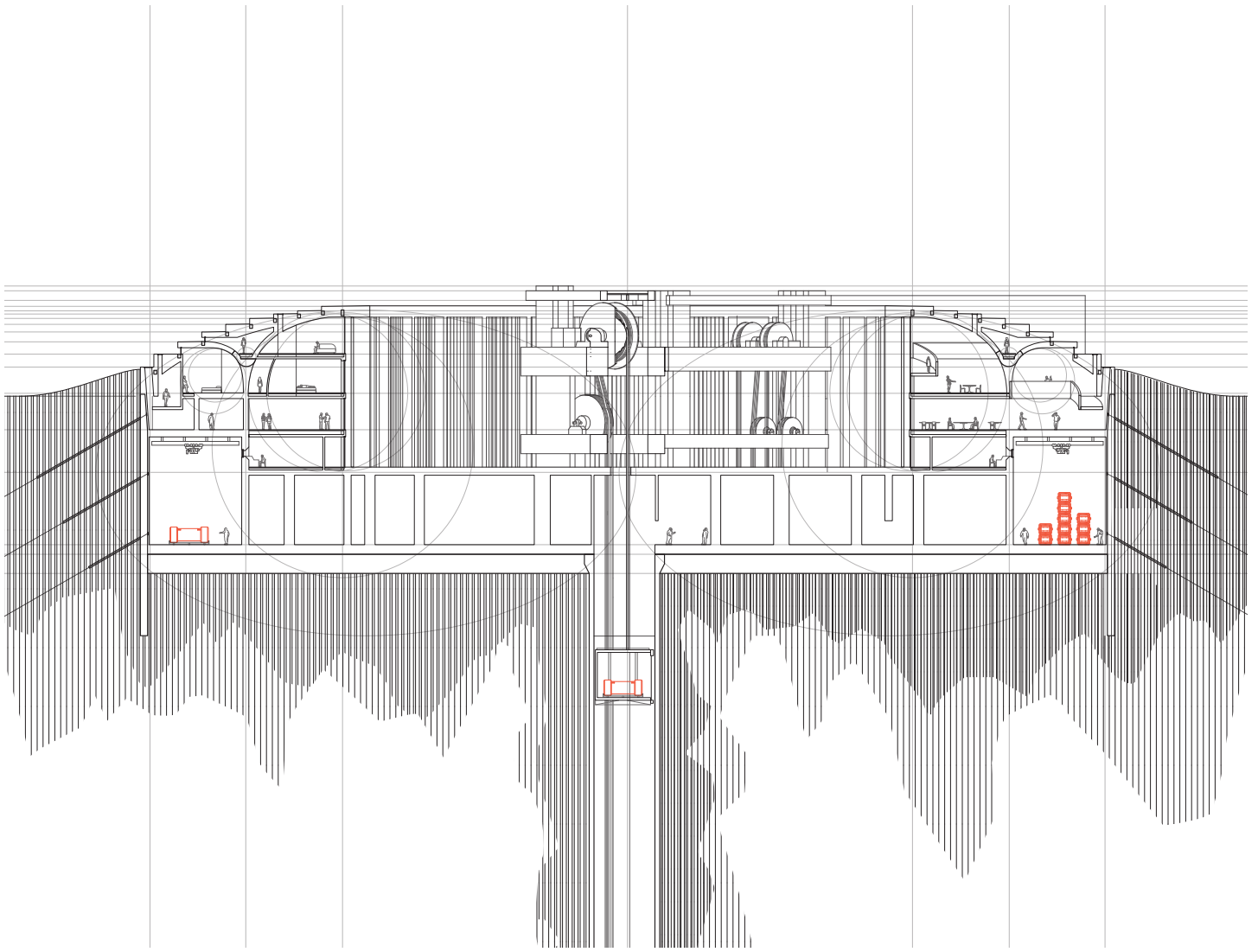


Border & Territories

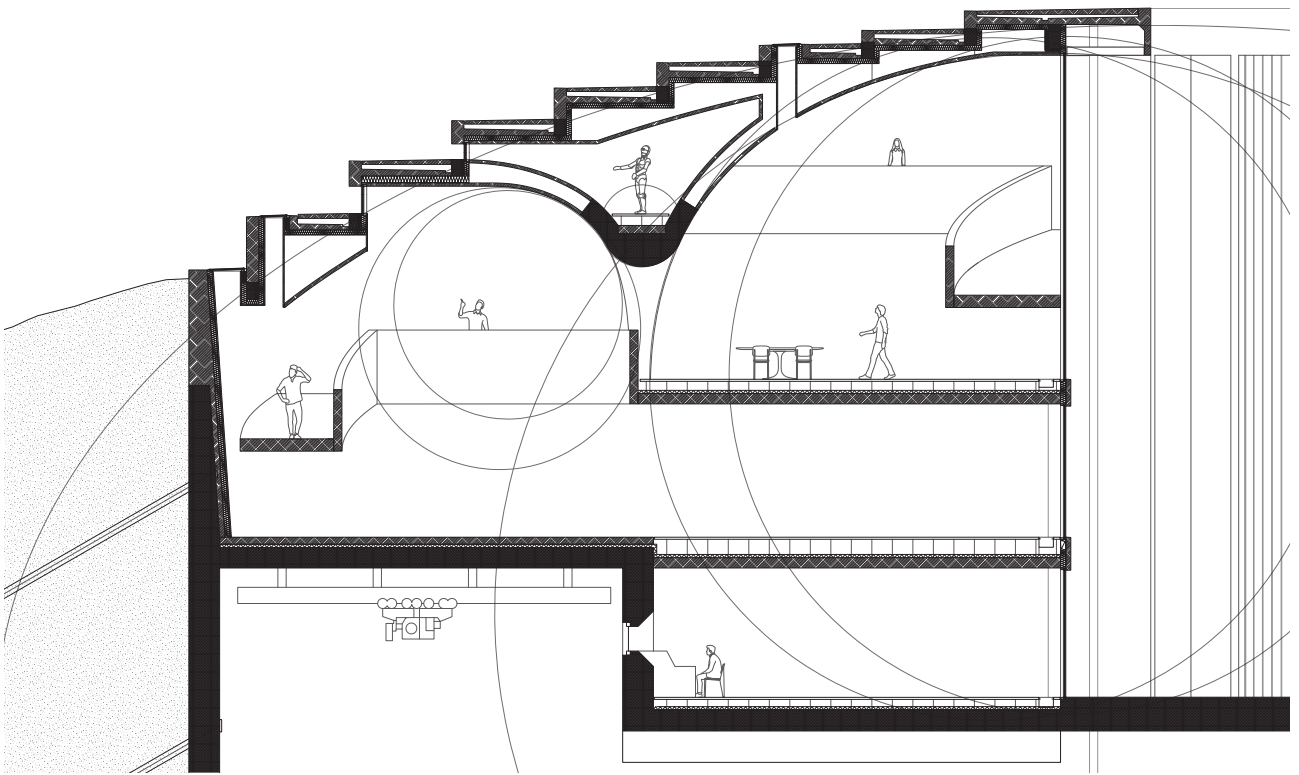






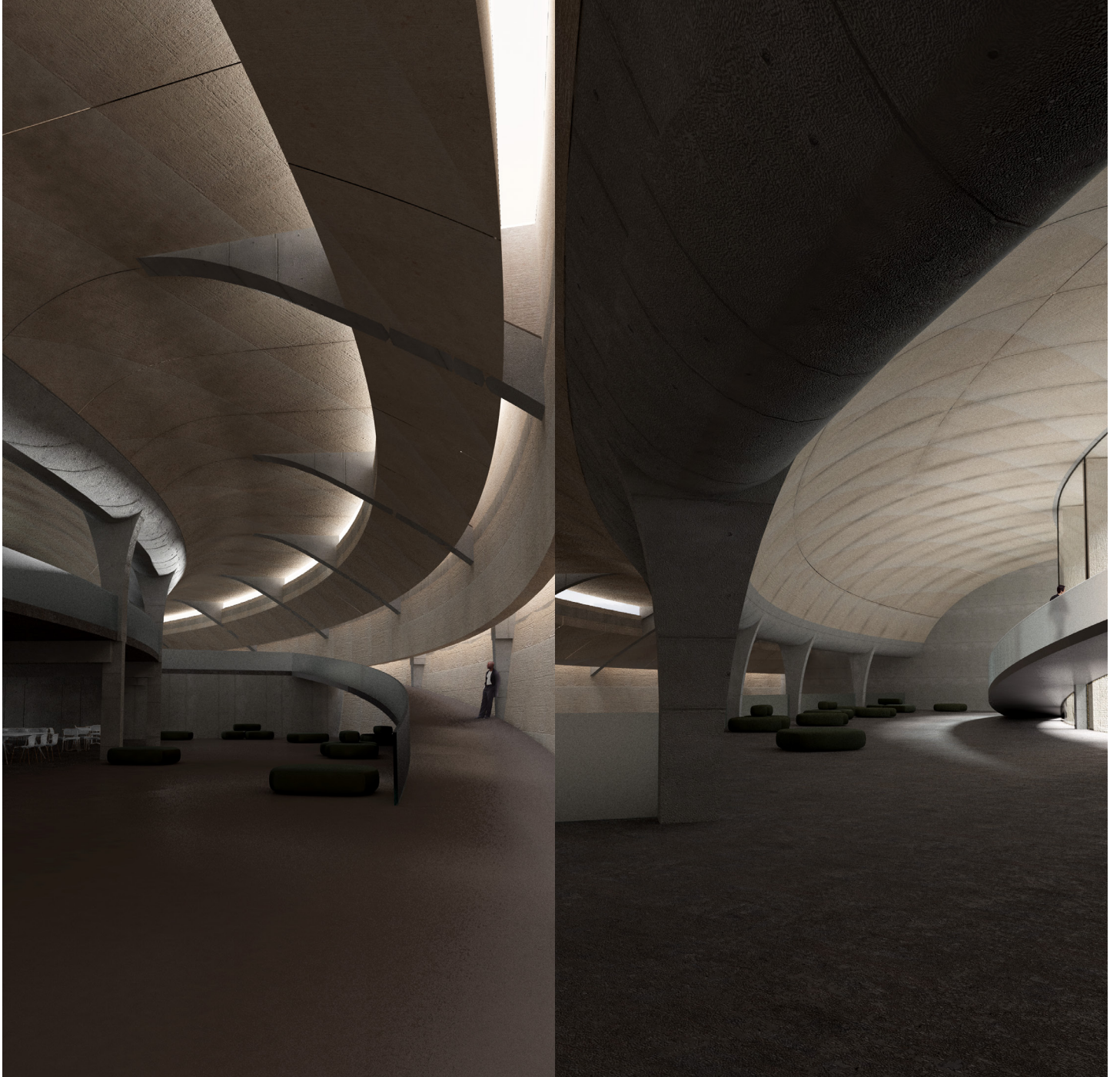




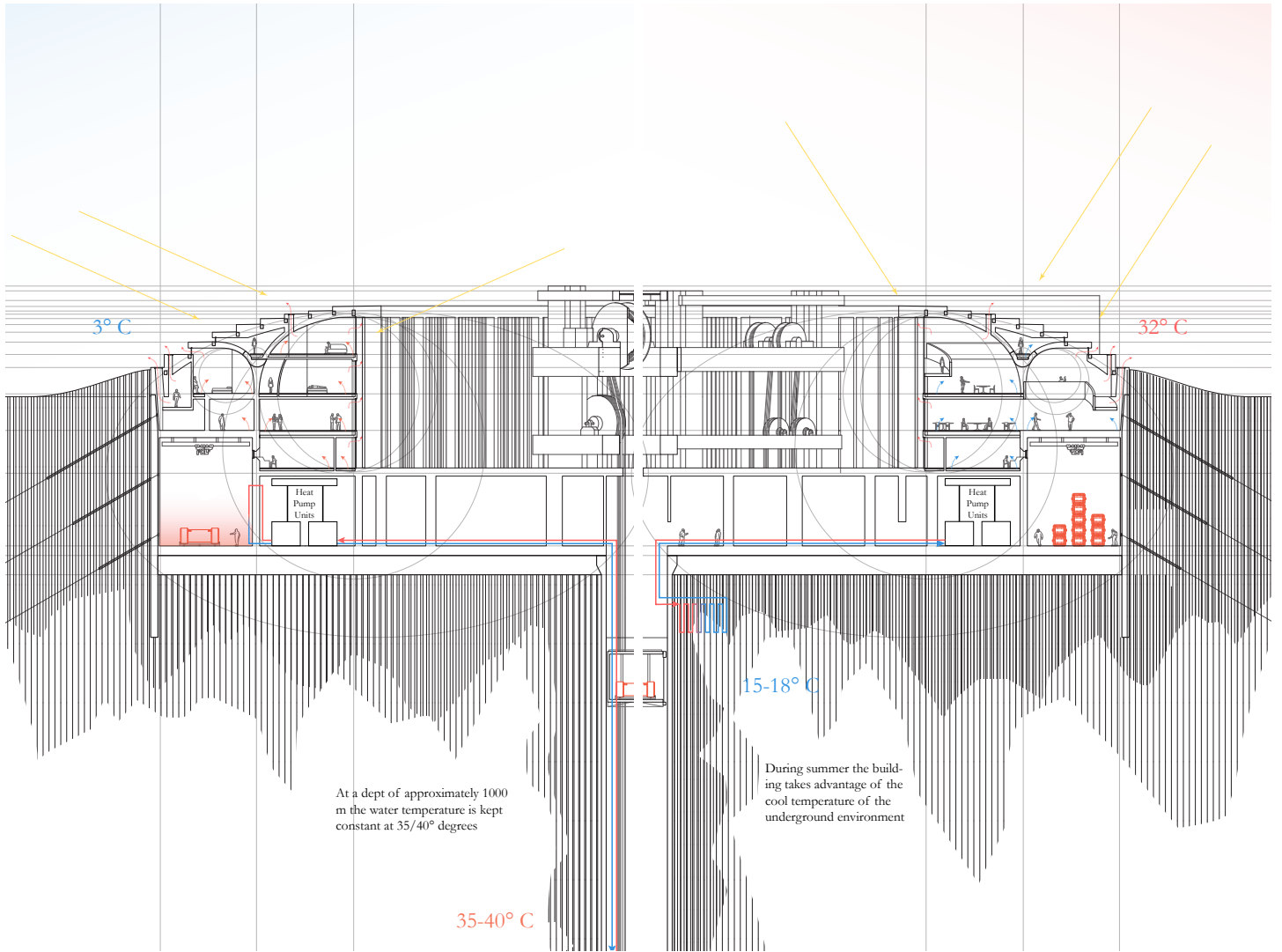




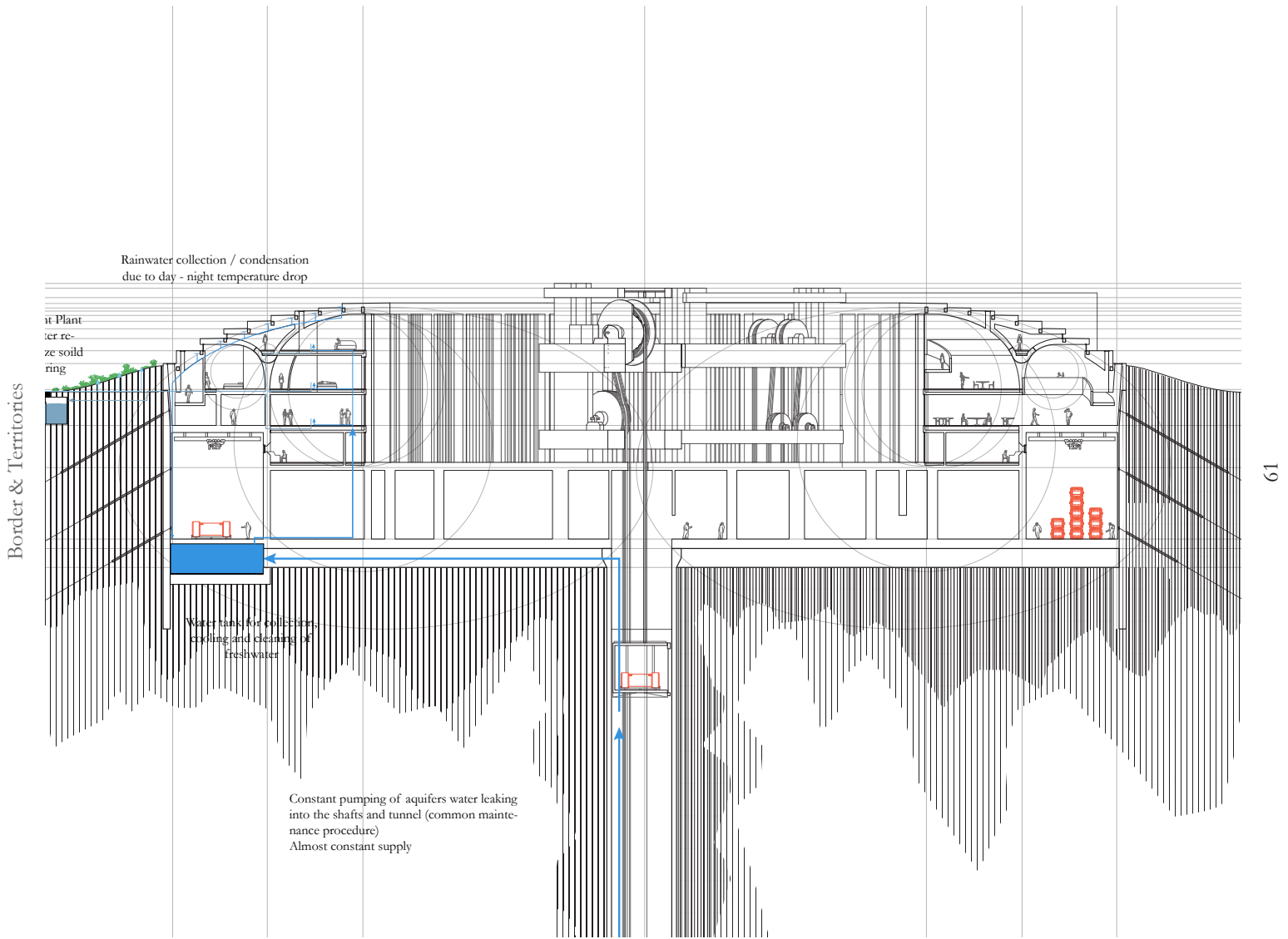






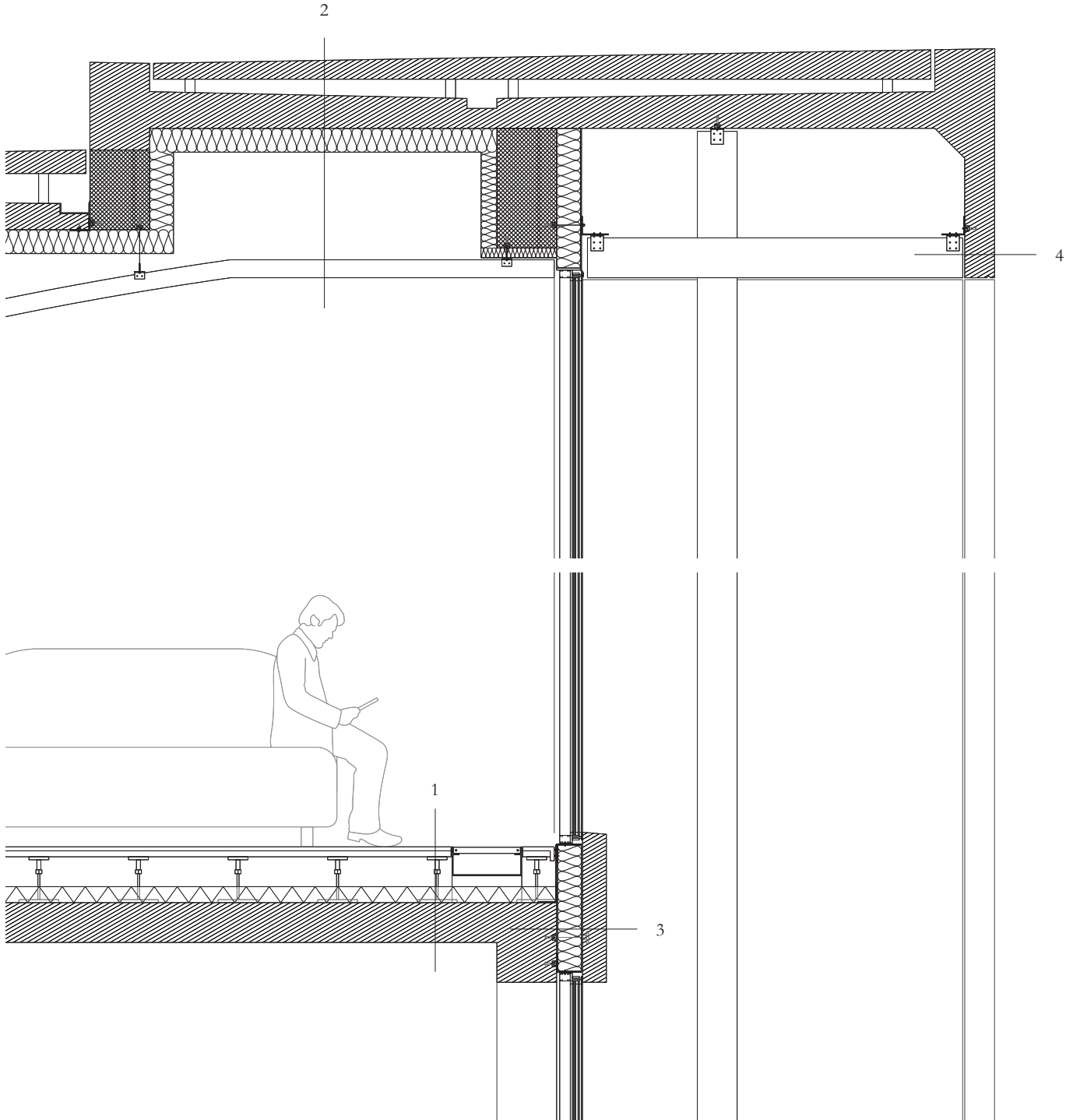






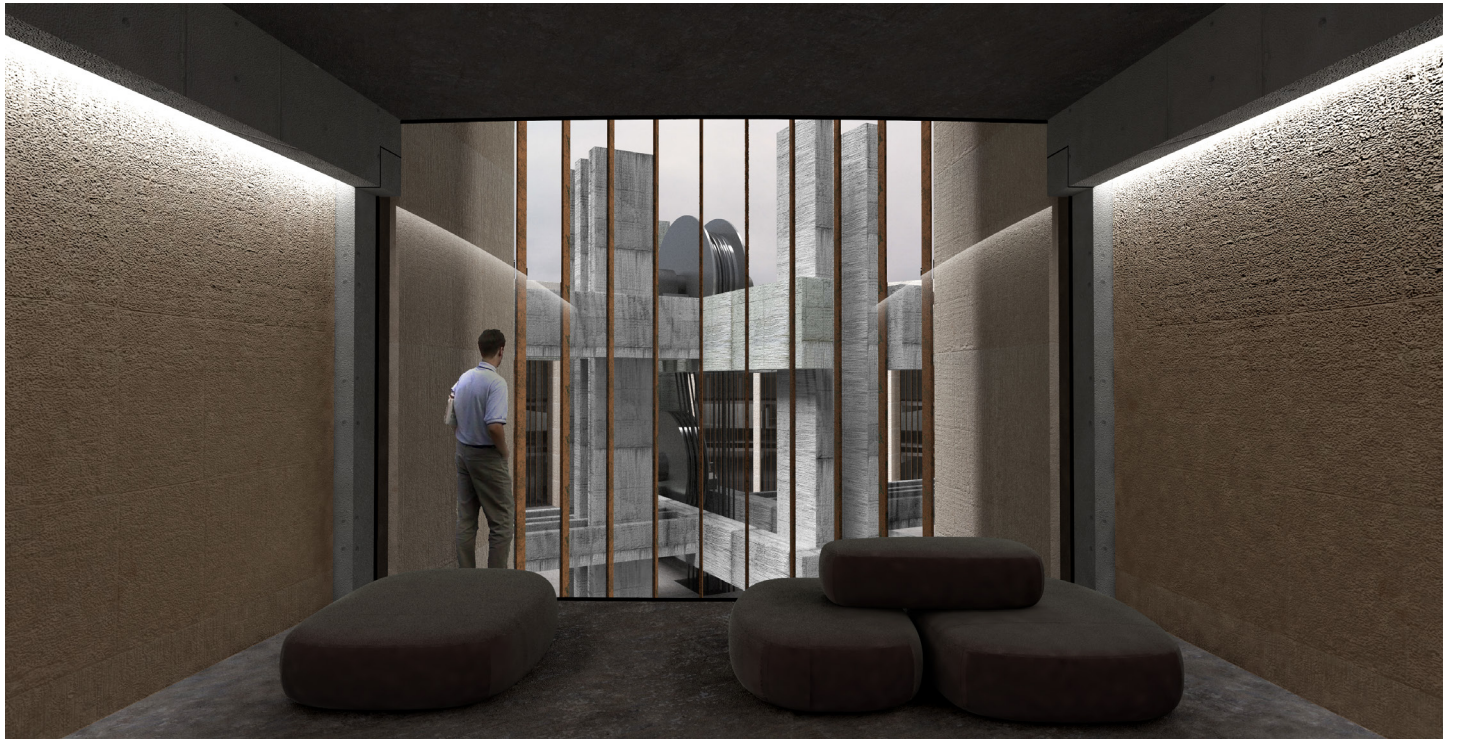
- (1) 20 mm granite tile flooring  
30 mm double floor  
Raisers  
100 mm rigid foam insulation  
Separation layer  
250 mm solid flat slab
- (2) 100 mm elevated precast reinforced concrete element  
Bituminous sheeting seal  
Precast reinforced concrete step module  
Vapour barrier  
150 mm stone wool thermal insulation  
30 x 90 mm stainless steel curved lamellas
- (3) 80 mm precast concrete cladding element to slab  
12.5 mm waterproof plasterboard panel  
150 mm stone wool thermal insulation  
Vapour barrier  
130 x 130 mm slotted steel angle bolted to halfen channel
- (4) 150 mm precast reinforced concrete roof element  
130 x 130 mm slotted steel angle bolted to halfen channel  
30 x 200 mm stainless steel lamellas

Border & Territories



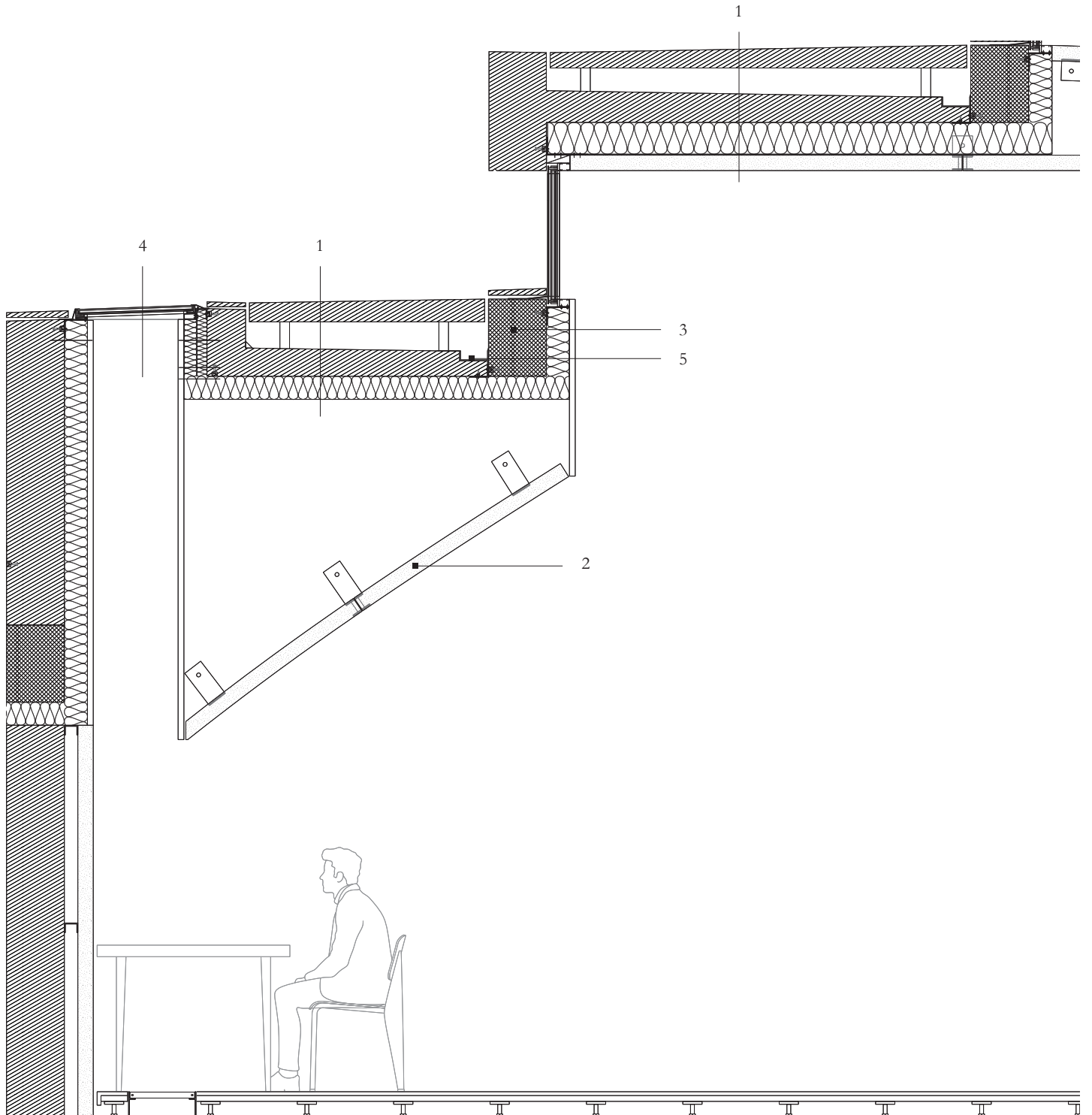






- (1) 100 mm elevated precast reinforced concrete element  
Bituminous sheeting seal  
Precast reinforced concrete step module  
Vapour barrier  
150 mm stone wool thermal insulation
- (2) 80 mm prefab concrete panel double curved
- (3) 300 x 400 mm precast curved beam for dome structure
- (4) Sun protection glazing in south  
10 mm toughened glass coated  
20 mm cavity  
2 x 4 mm laminated glass  
Aluminium frame
- (5) Gutter

Border & Territories

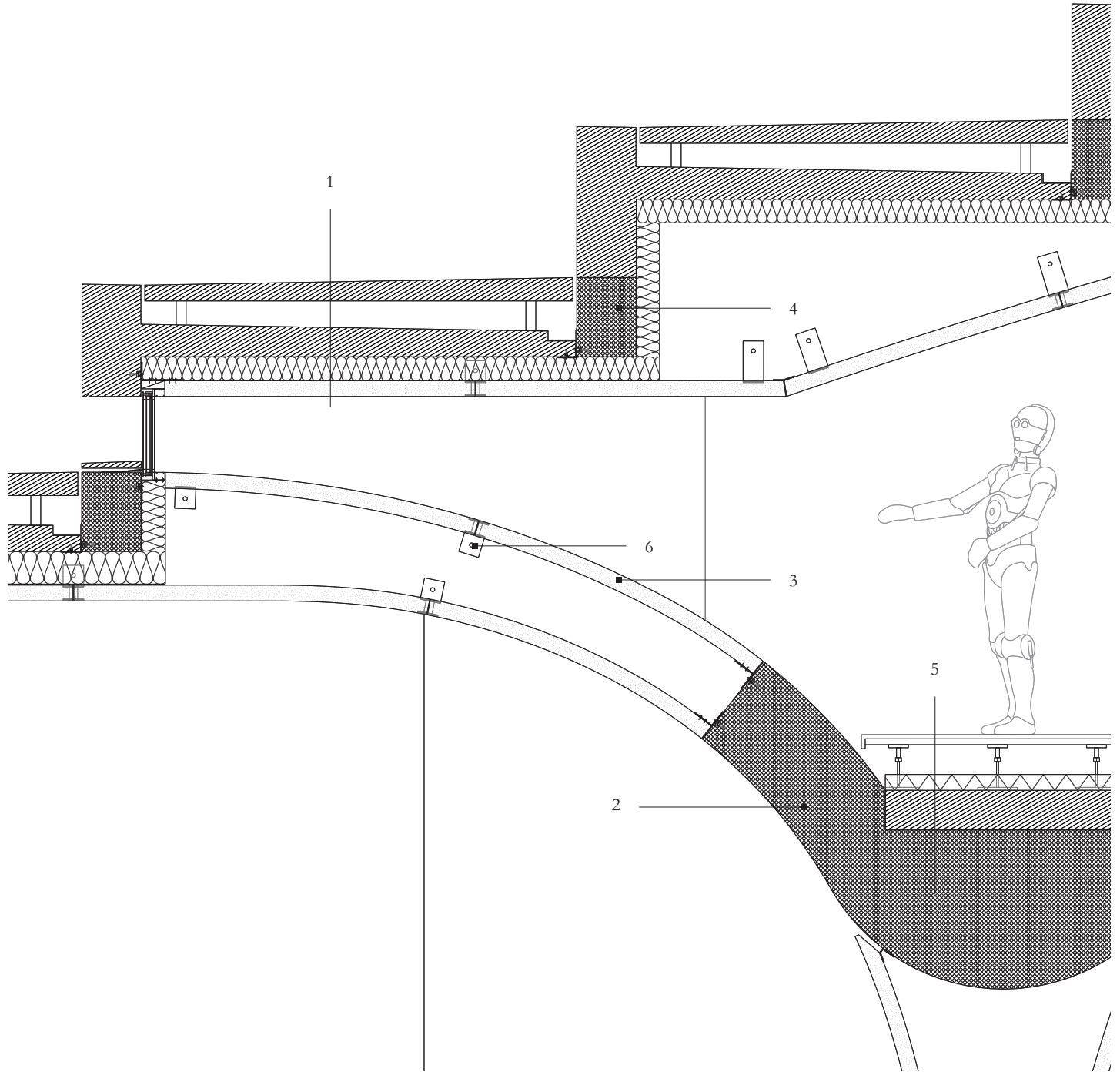






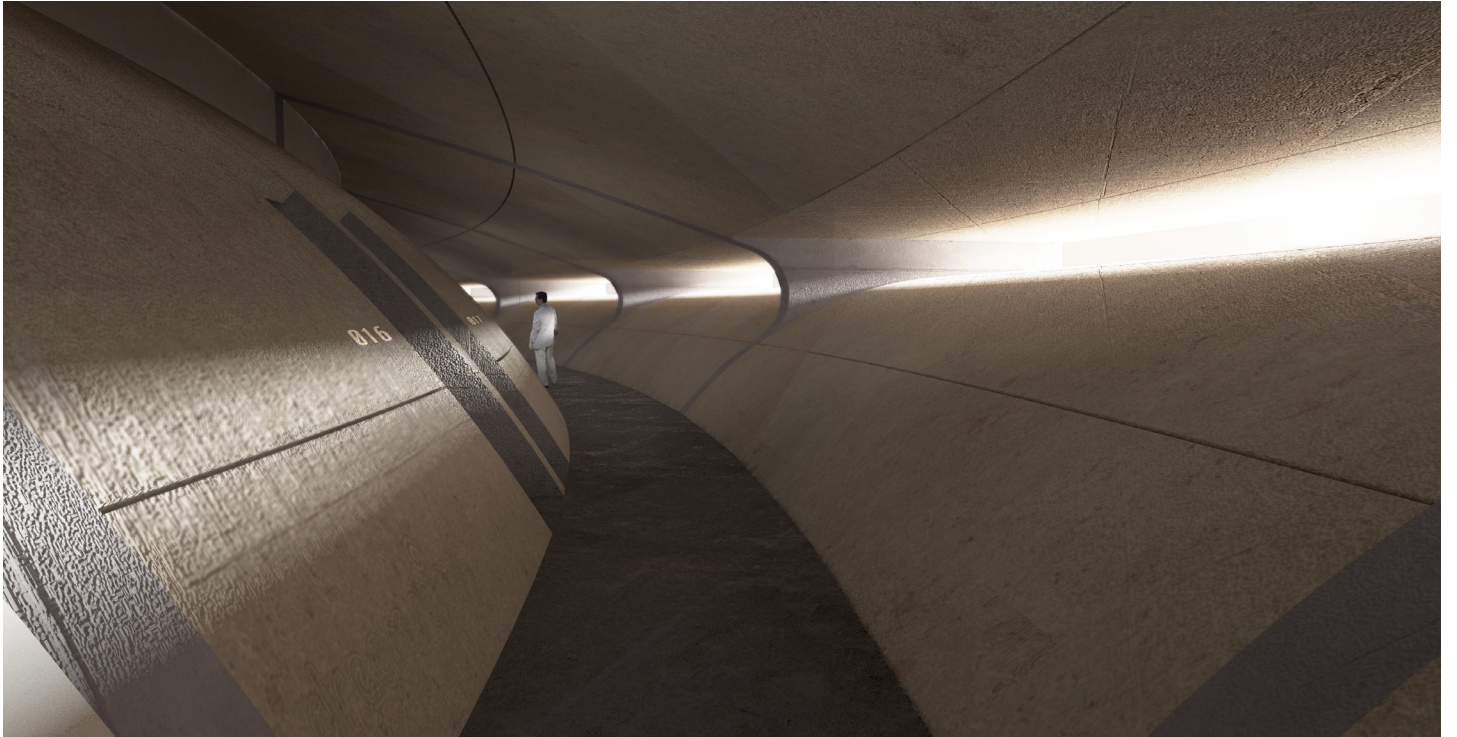
- (1) 100 mm elevated precast reinforced concrete element  
Bituminous sheeting seal  
Precast reinforced concrete step module  
Vapour barrier  
150 mm stone wool thermal insulation  
80mm precast concrete panel curved
- (2) Precast curved special beam
- (3) 80 mm prefab concrete panel double curved
- (4) 300 x 400 mm precast curved beam for dome structure
- (5) 20 mm granite tile flooring  
30 mm double floor  
Raisers  
100 mm rigid foam insulation  
Separation layer  
Precast curved special beam
- (6) 5 mm steel L plates attached to arching structure

Border & Territories







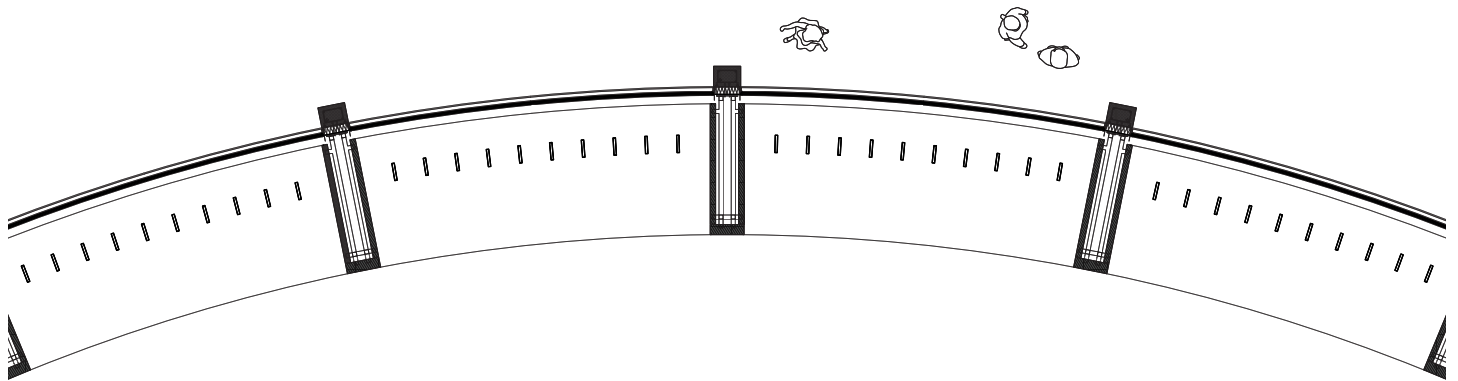




Border & Territories



75



- (1) 80 mm precast concrete cladding element to column  
steel substructure  
12.5 mm waterproof plasterboard panel  
150 mm stone wool thermal insulation  
Vapour barrier  
130 x 130 mm slotted steel angle bolted to halfen channel  
300 x 350 mm precast reinforced concrete column
  
- (2) 30 x 200 mm stainless steel lamellas  
Sun protection glazing in south  
10 mm toughened glass coated  
20 mm cavity  
2 x 4 mm laminated glass  
Aluminium frame

