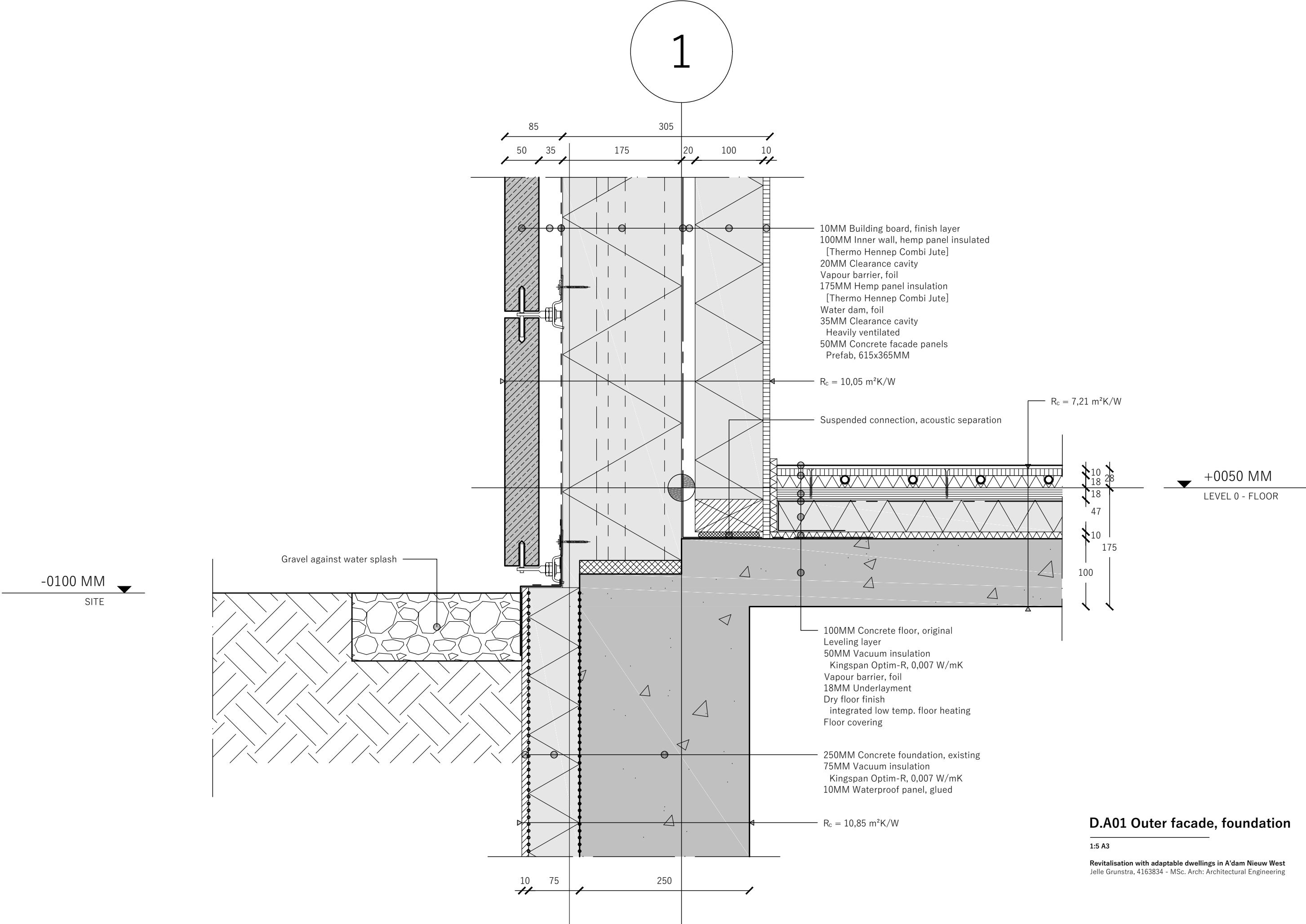


D.XXX Detail overview

1:50 A3

Revitalisation with adaptable dwellings in A'dam Nieuw West
 Jelle Grunstra, 4163834 - MSc. Arch: Architectural Engineering

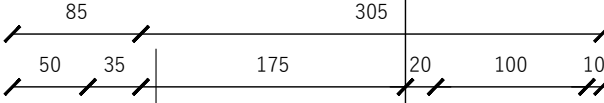
1



D.A01 Outer facade, foundation

1:5 A3

1



+2050 MM
LEVEL 0 - TOP SILL

+0675 MM
LEVEL 0 - BOTTOM SILL

$R_c = 10,05 \text{ m}^2\text{K/W}$

+2215 MM
LEVEL 0 - TOP

Ventilation grate
DucoFit 50, $U = 3,11 \text{ W/m}^2\text{K}$
Wooden window frame, 90x80MM / 78x78MM
Passive, $U_{w,avg} = 0,79 \text{ W/m}^2\text{K}$
"Overbeek, Passiefkozijn EHP"
Triple glazing, 42MM
 $U = 0,6 \text{ W/m}^2\text{K}$
Nissink; 4MM Glazing, 15MM Argon cavity

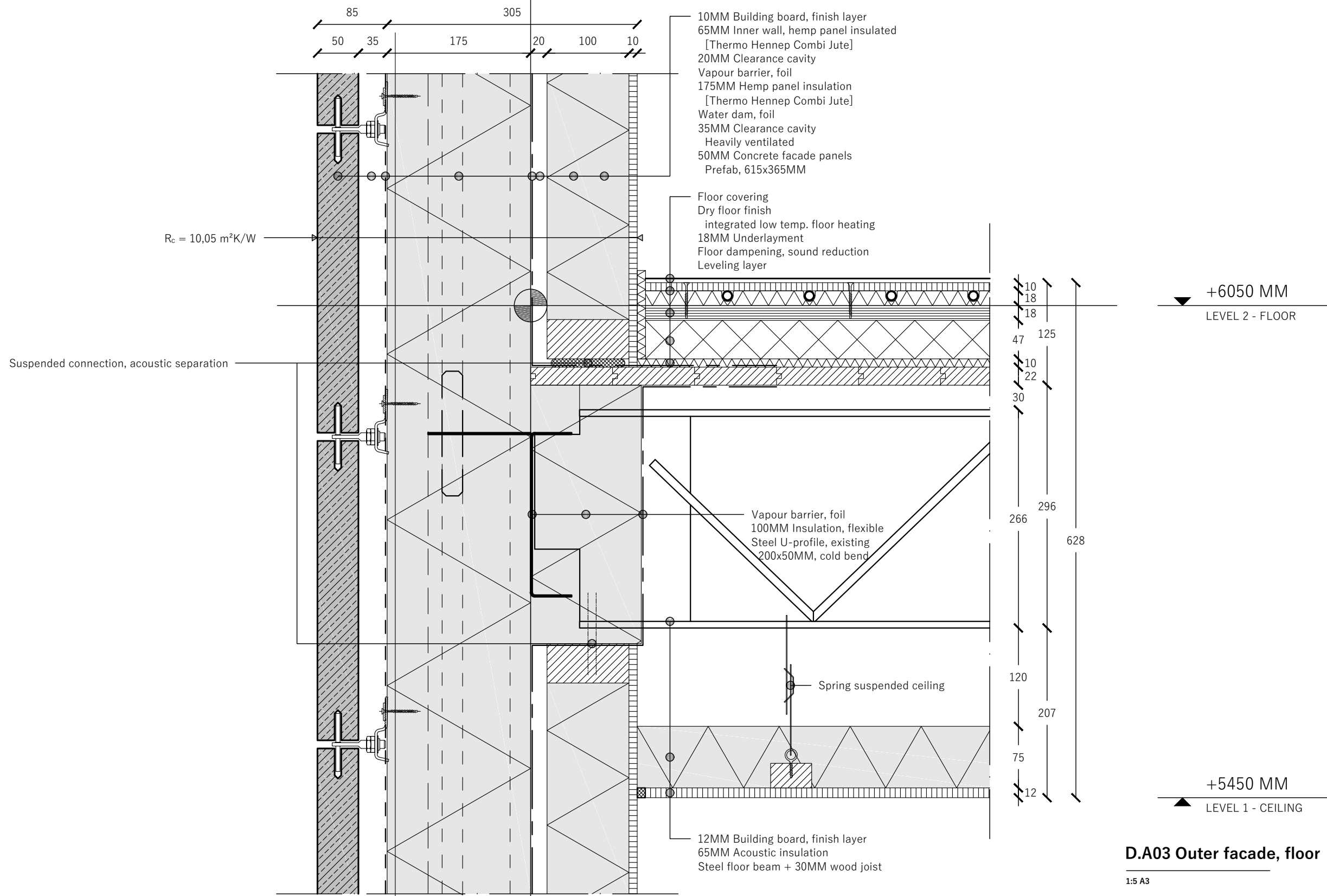
+0700 MM
LEVEL 0 - WINDOW SILL

10MM Building board, finish layer
100MM Inner wall, hemp panel insulated
[Thermo Hennep Combi Jute]
20MM Clearance cavity
Vapour barrier, foil
175MM Hemp panel insulation
[Thermo Hennep Combi Jute]
Water dam, foil
35MM Clearance cavity
Heavily ventilated
50MM Concrete facade panels
Prefab, 615x365MM

D.A02 Outer facade, window

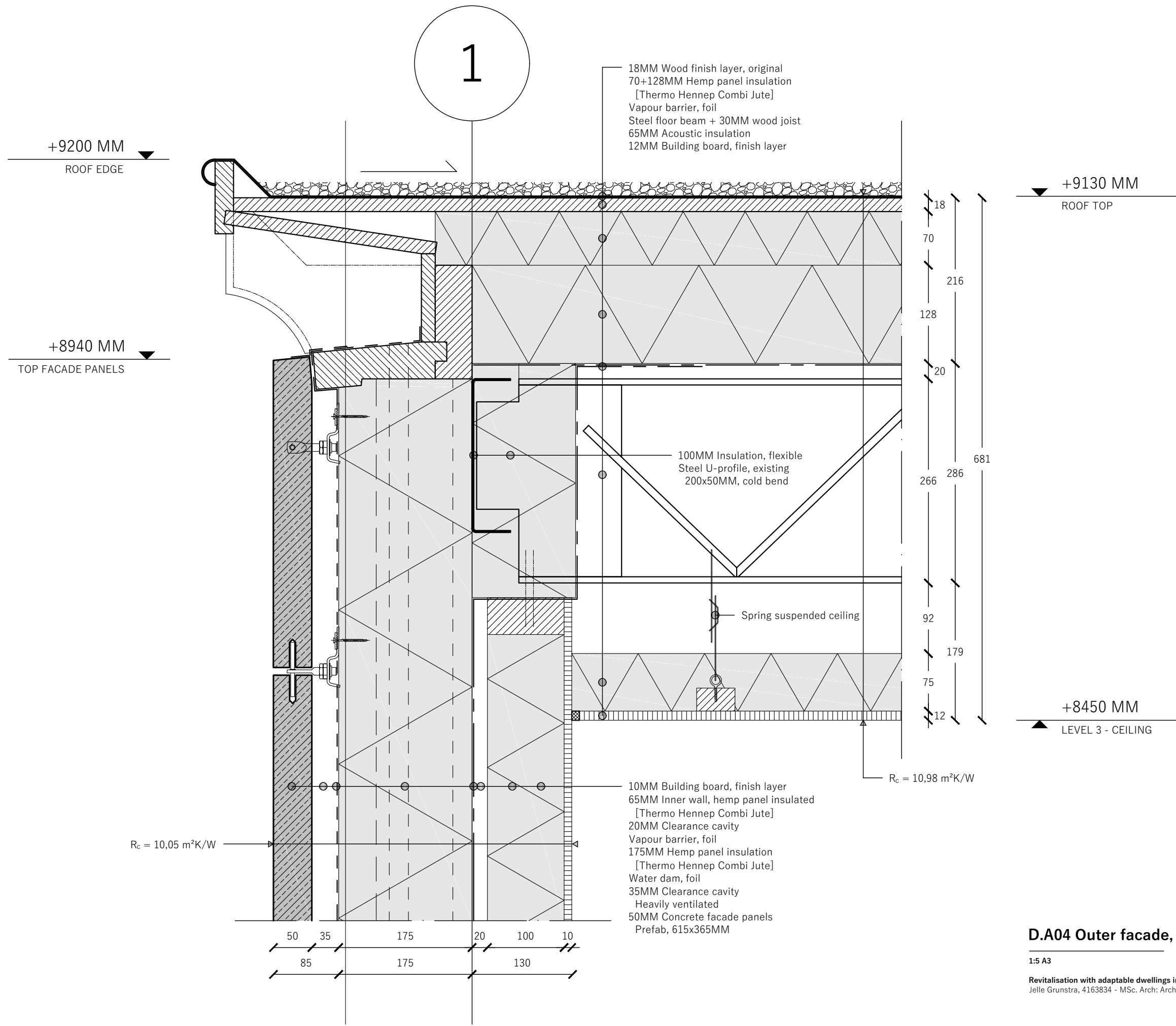
1:5 A3

1



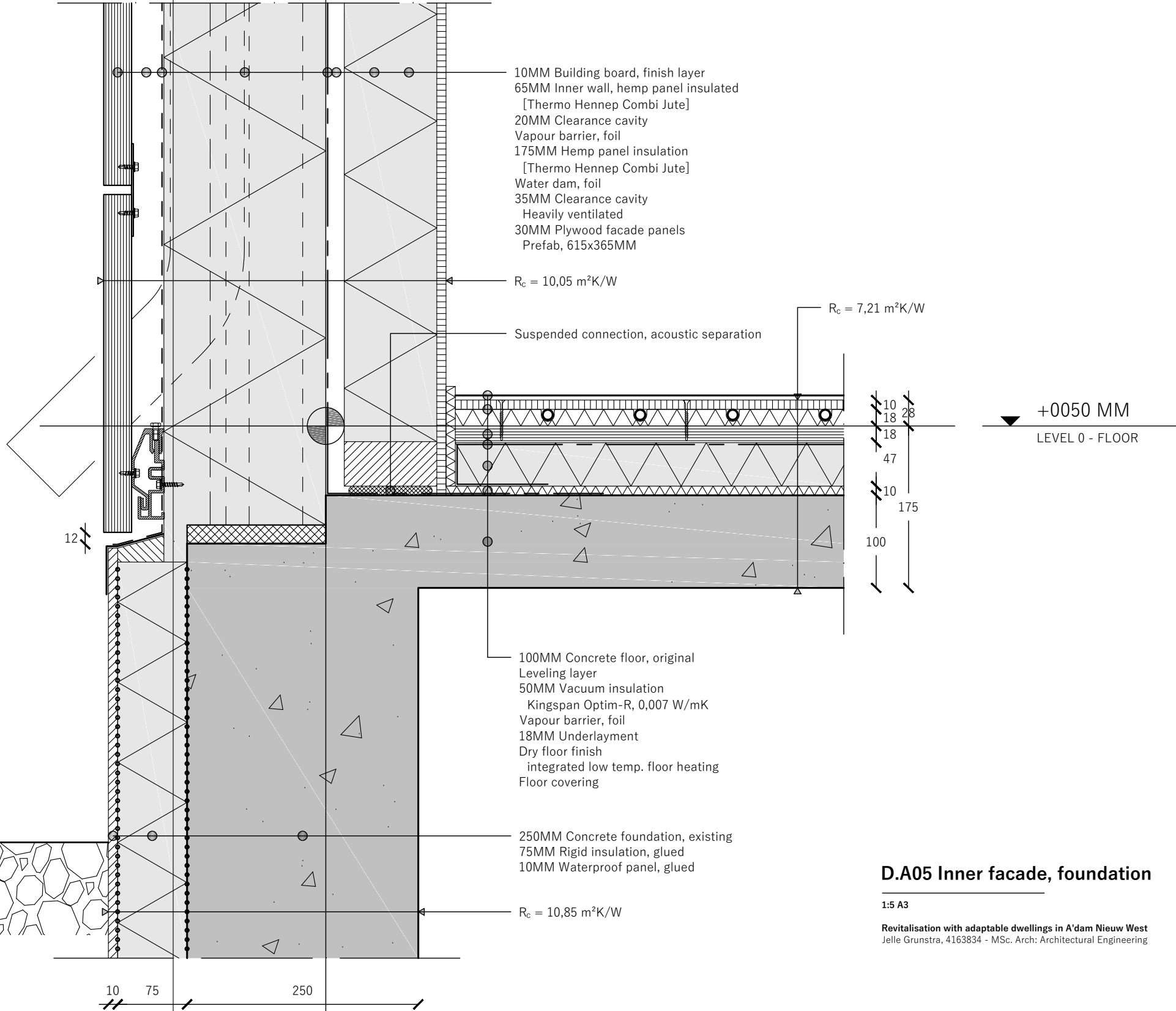
D.A03 Outer facade, floor

1:5 A3



2

65 305
30 35 175 20 100 10



10MM Building board, finish layer
65MM Inner wall, hemp panel insulated
[Thermo Hennep Combi Jute]
20MM Clearance cavity
Vapour barrier, foil
175MM Hemp panel insulation
[Thermo Hennep Combi Jute]
Water dam, foil
35MM Clearance cavity
Heavily ventilated
30MM Plywood facade panels
Prefab, 615x365MM

$R_c = 10,05 \text{ m}^2\text{K/W}$

Suspended connection, acoustic separation

$R_c = 7,21 \text{ m}^2\text{K/W}$

+0050 MM
LEVEL 0 - FLOOR

100MM Concrete floor, original
Leveling layer
50MM Vacuum insulation
Kingspan Optim-R, 0,007 W/mK
Vapour barrier, foil
18MM Underlayment
Dry floor finish
integrated low temp. floor heating
Floor covering

250MM Concrete foundation, existing
75MM Rigid insulation, glued
10MM Waterproof panel, glued

$R_c = 10,85 \text{ m}^2\text{K/W}$

Gravel against water splash

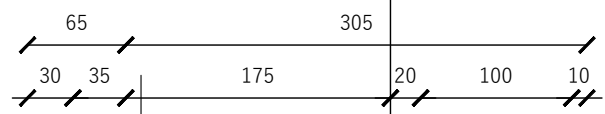
-0400 MM
SITE

D.A05 Inner facade, foundation

1:5 A3

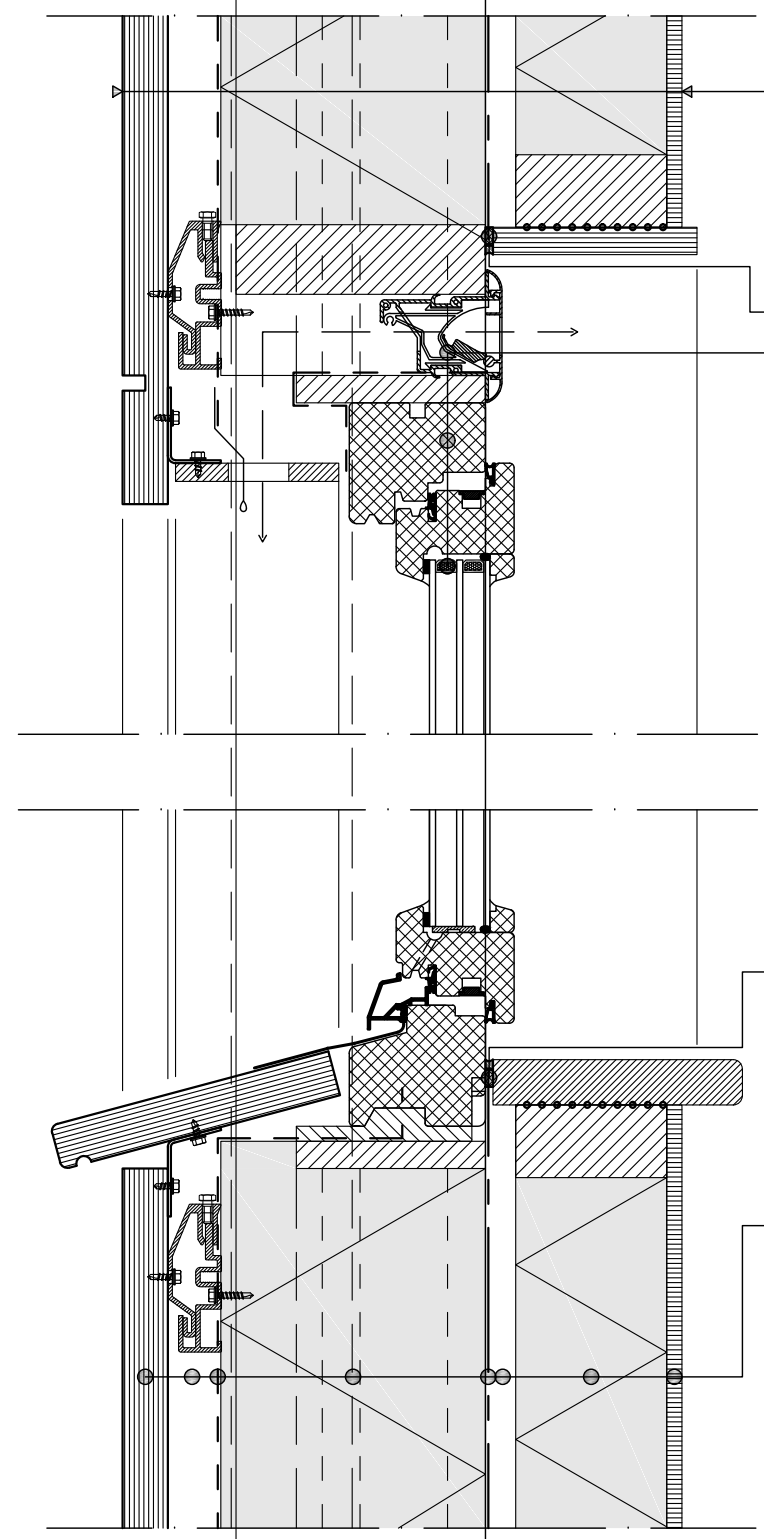
Revitalisation with adaptable dwellings in A'dam Nieuw West
Jelle Grunstra, 4163834 - MSc. Arch: Architectural Engineering

2



+2050 MM
LEVEL 0 - TOP SILL

+0675 MM
LEVEL 0 - BOTTOM SILL



$R_c = 10,05 \text{ m}^2\text{K/W}$

+2215 MM
LEVEL 0 - TOP

Acoustic separation
 Ventilation grate
 DucoFit 50, $U = 3,11 \text{ W/m}^2\text{K}$
 Wooden window frame, 90x80MM / 78x78MM
 Passive, $U_{w,avg} = 0,79 \text{ W/m}^2\text{K}$
 "Overbeek, Passiefkozijn EHP"
 Triple glazing, 42MM
 $U = 0,6 \text{ W/m}^2\text{K}$
 Nissink; 4MM Glazing, 15MM Argon cavity

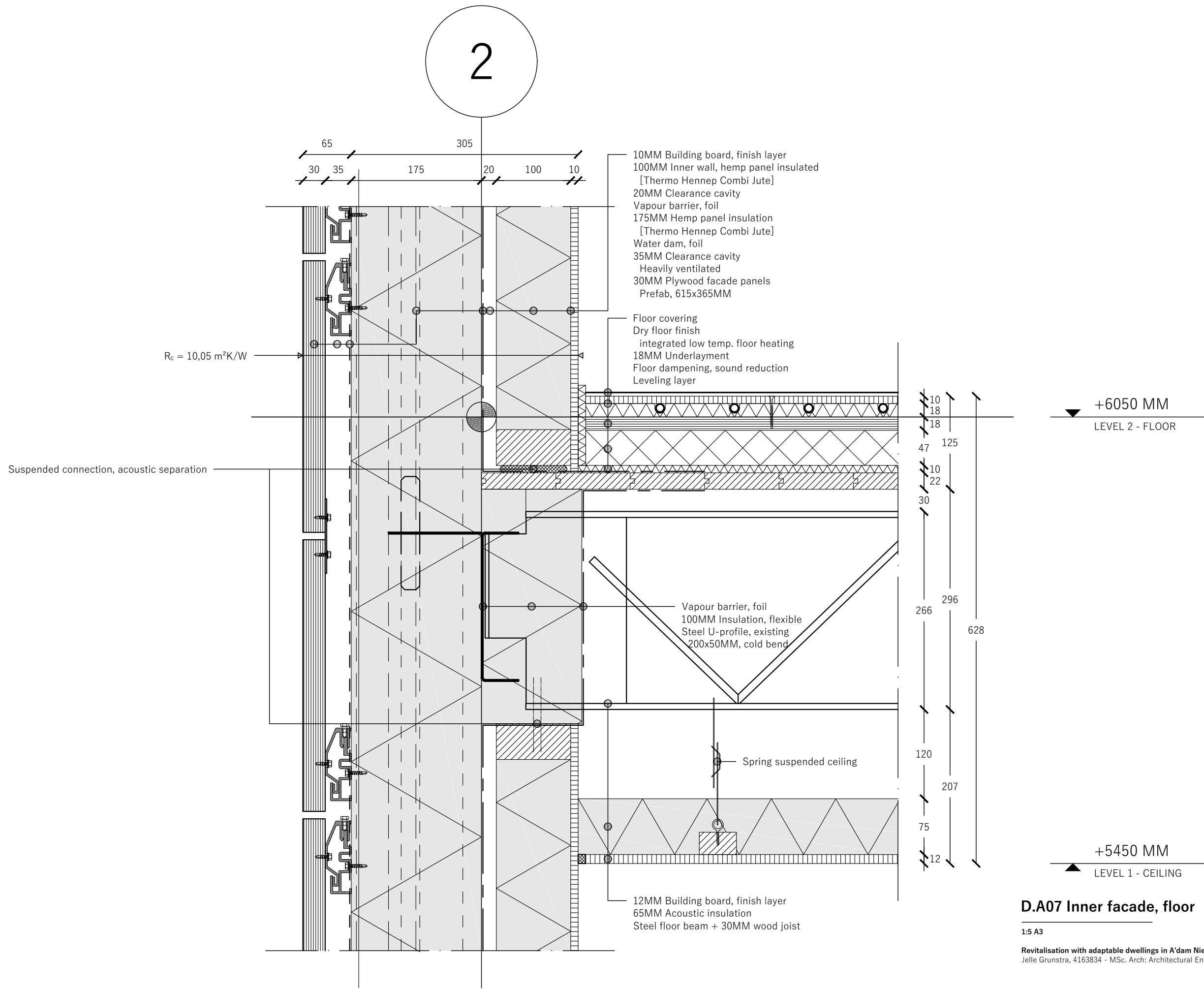
Acoustic separation
 +0700 MM
LEVEL 0 - WINDOW SILL

10MM Building board, finish layer
 100MM Inner wall, hemp panel insulated
 [Thermo Hennep Combi Jute]
 20MM Clearance cavity
 Vapour barrier, foil
 175MM Hemp panel insulation
 [Thermo Hennep Combi Jute]
 Water dam, foil
 35MM Clearance cavity
 Heavily ventilated
 30MM Plywood facade panels
 Prefab, 615x365MM

D.A06 Inner facade, window

1:5 A3

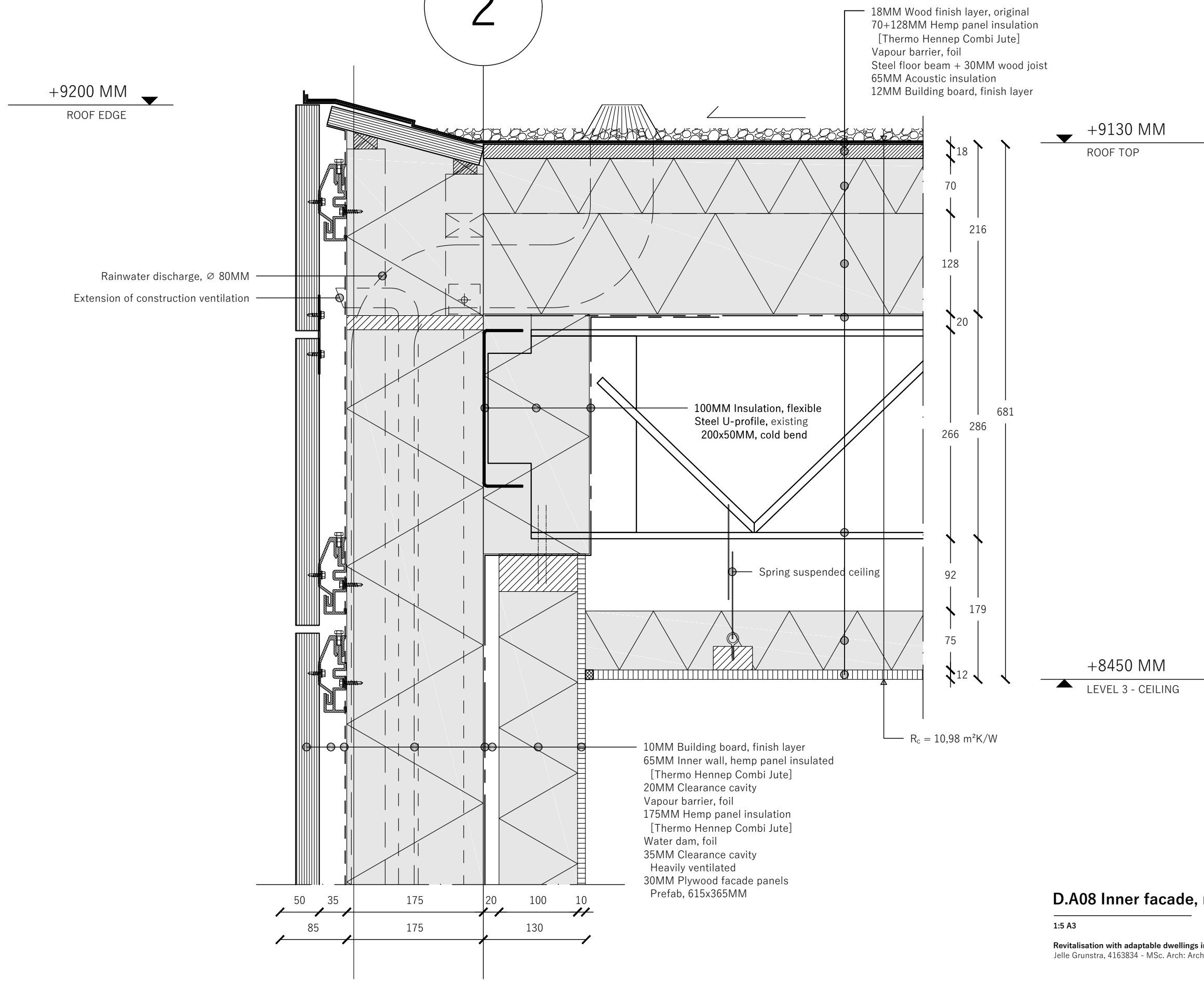
2



D.A07 Inner facade, floor

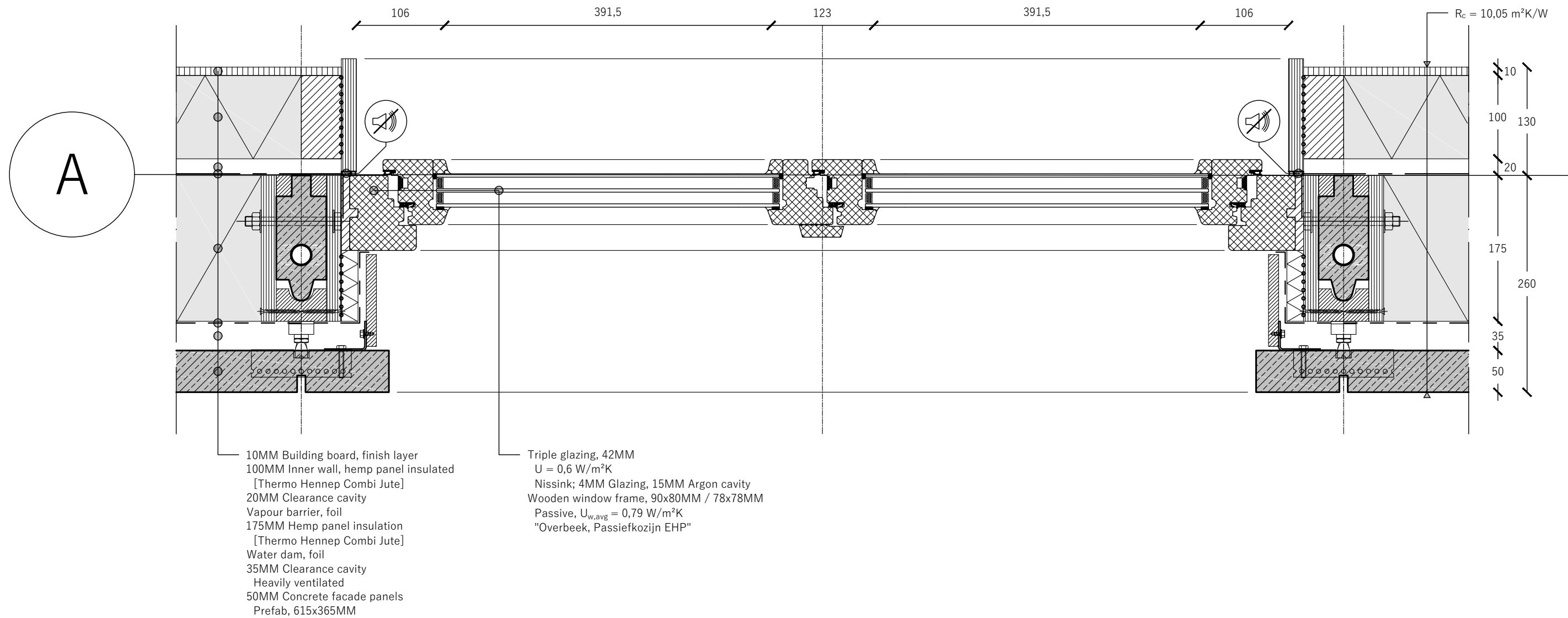
1:5 A3

2



D.A08 Inner facade, roof edge

1:5 A3



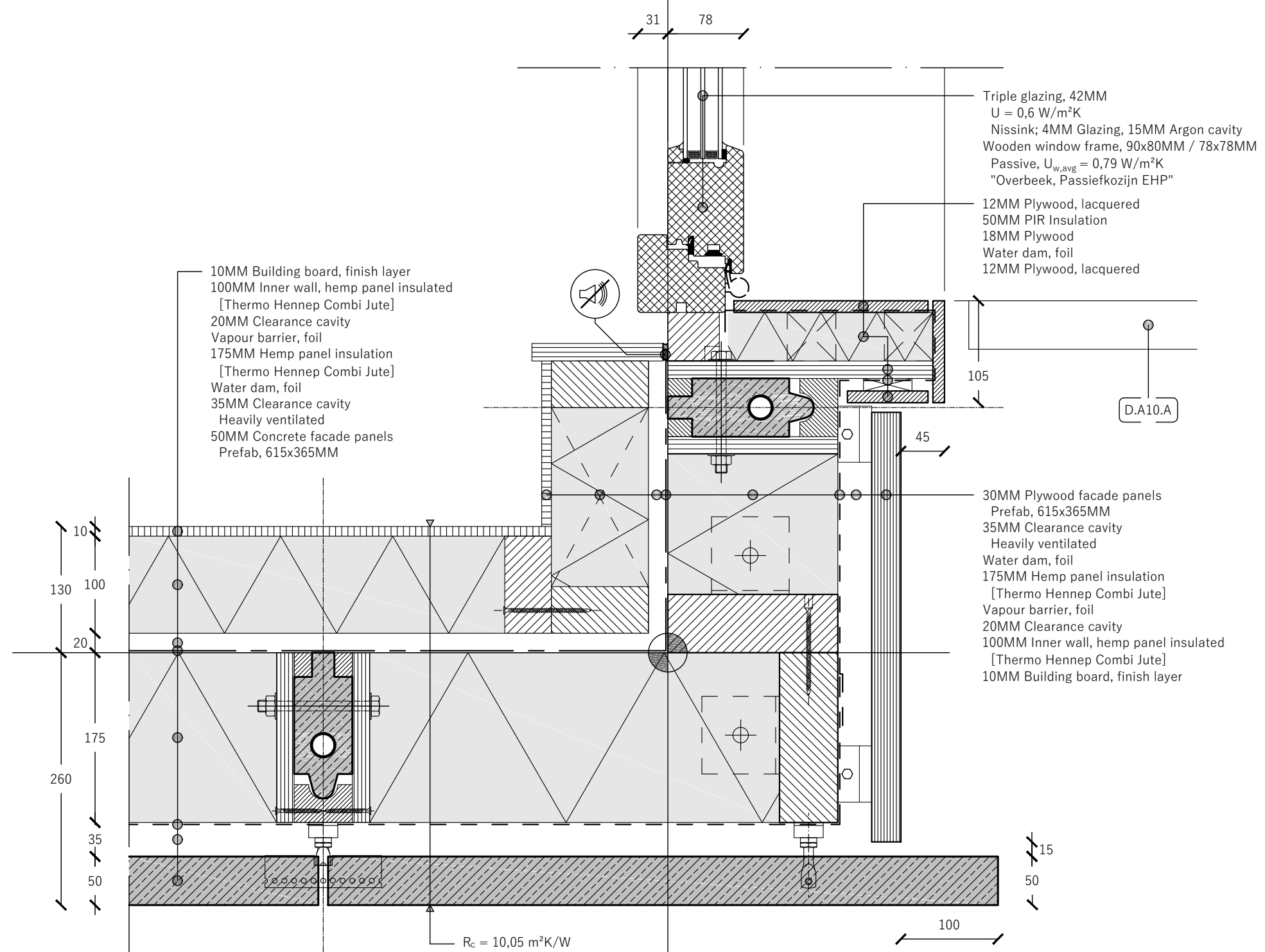
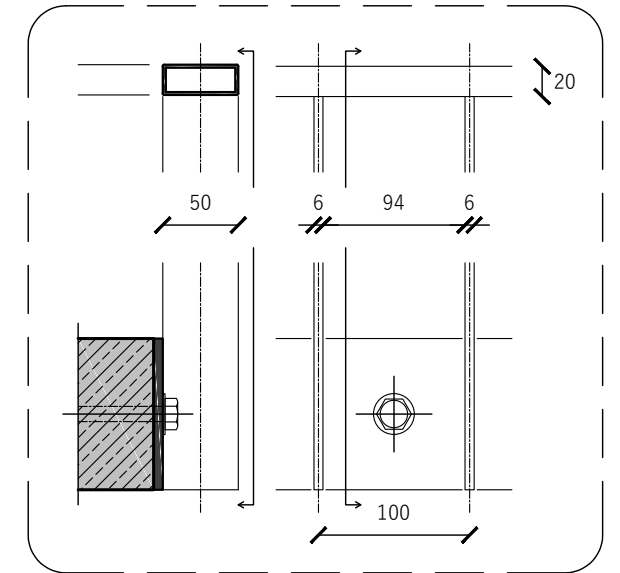
D.A09 Outer facade, window [plan]

1:5 A3

Revitalisation with adaptable dwellings in A'dam Nieuw West
Jelle Grunstra, 4163834 - MSc. Arch: Architectural Engineering

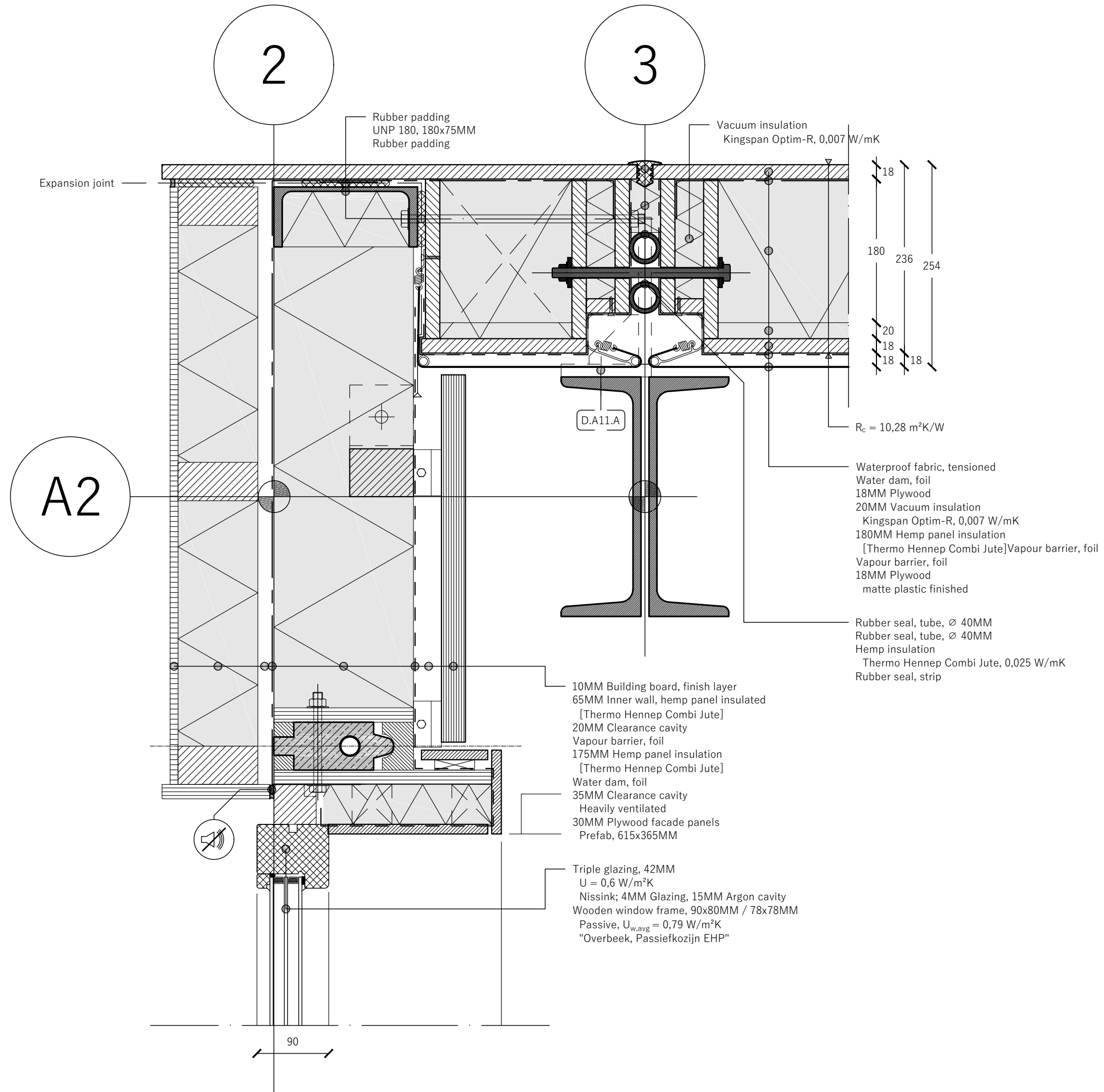
2

D.A10.A: BALCONY FENCE

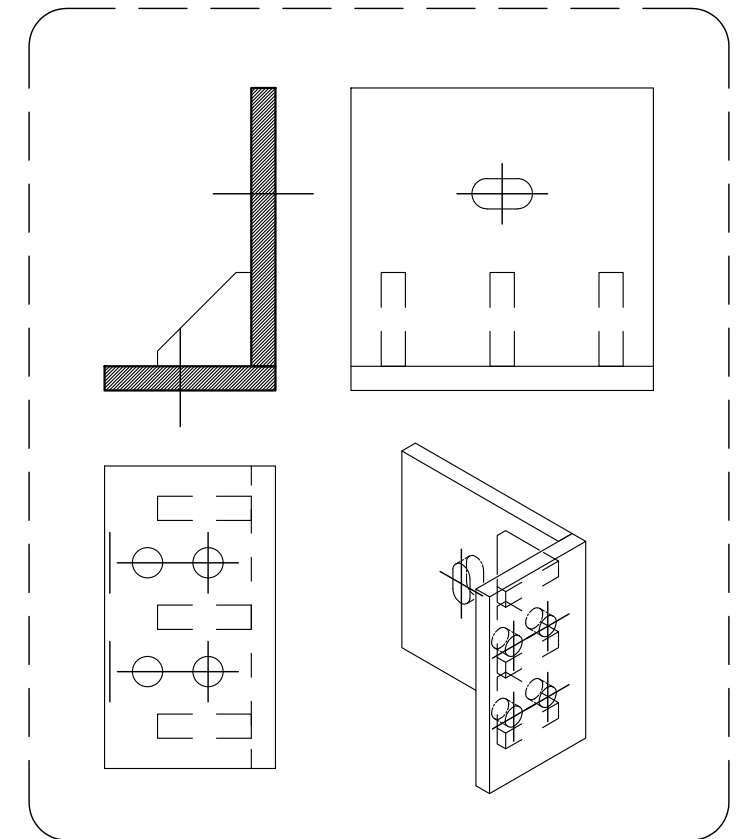


D.A10 Outer/inner facade, corner

1:5 A3



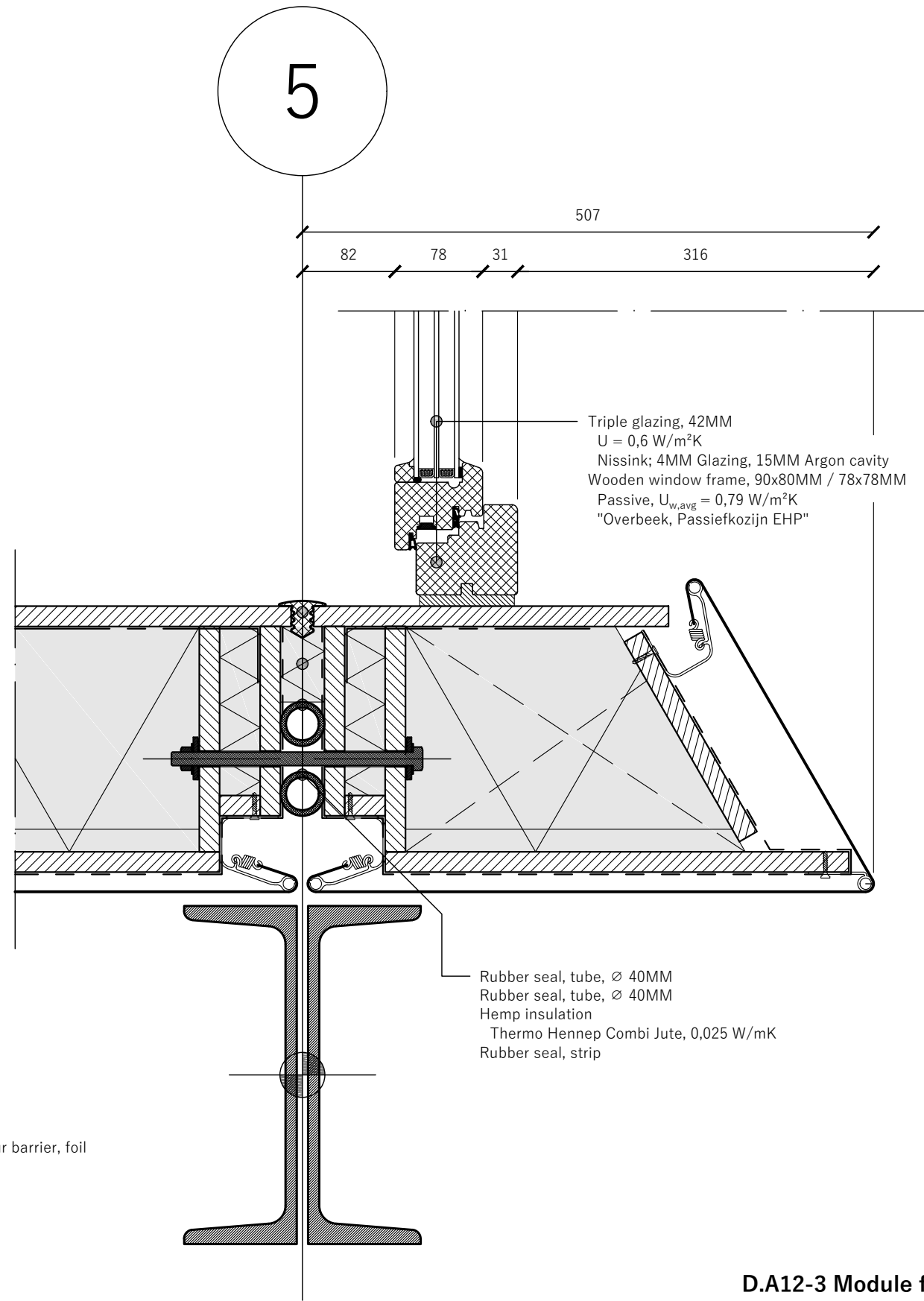
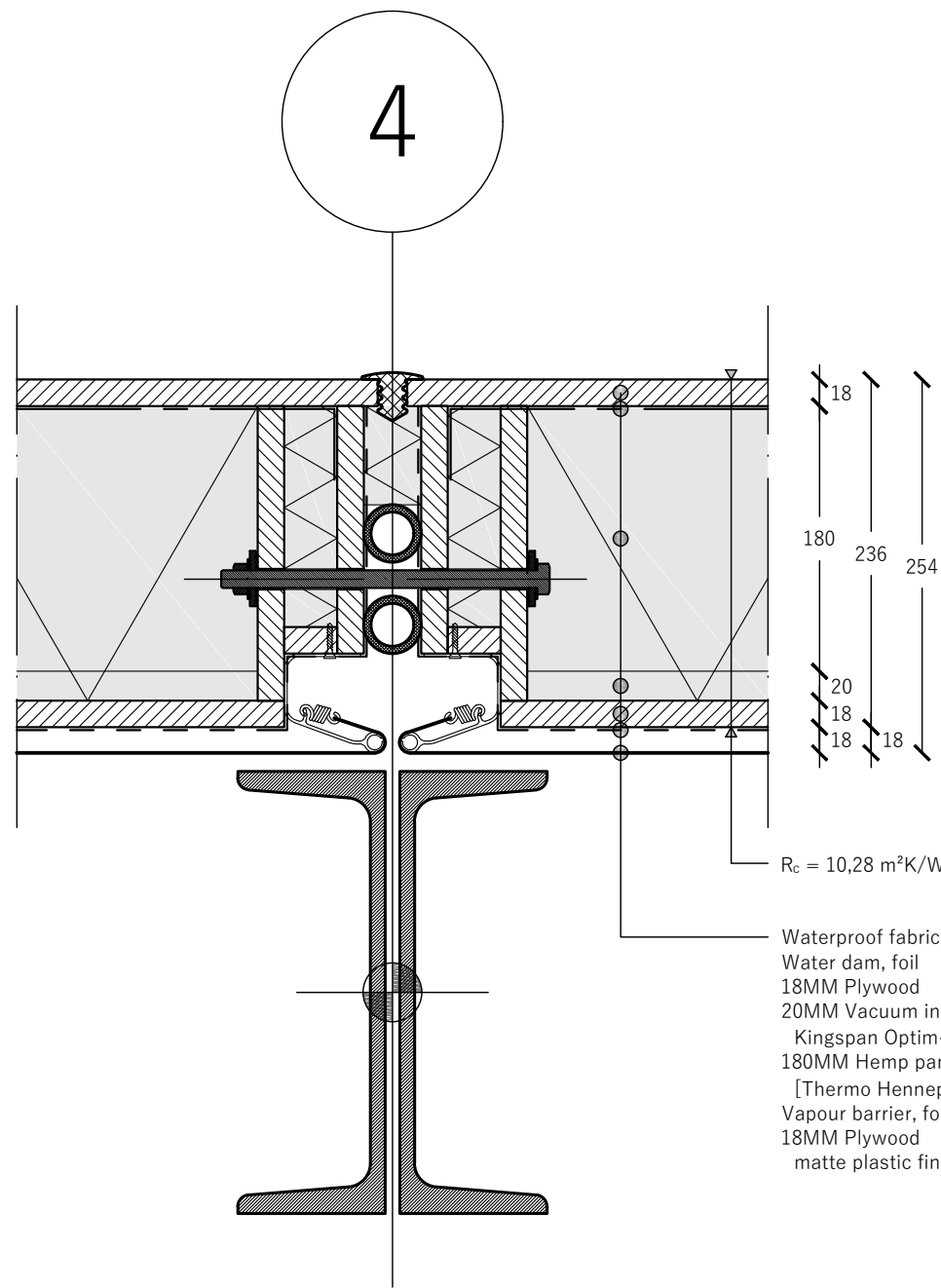
D.A11.A: CONNECTION: MODULE - SUPPORT



D.A11 Inner facade, module

1:5 A3

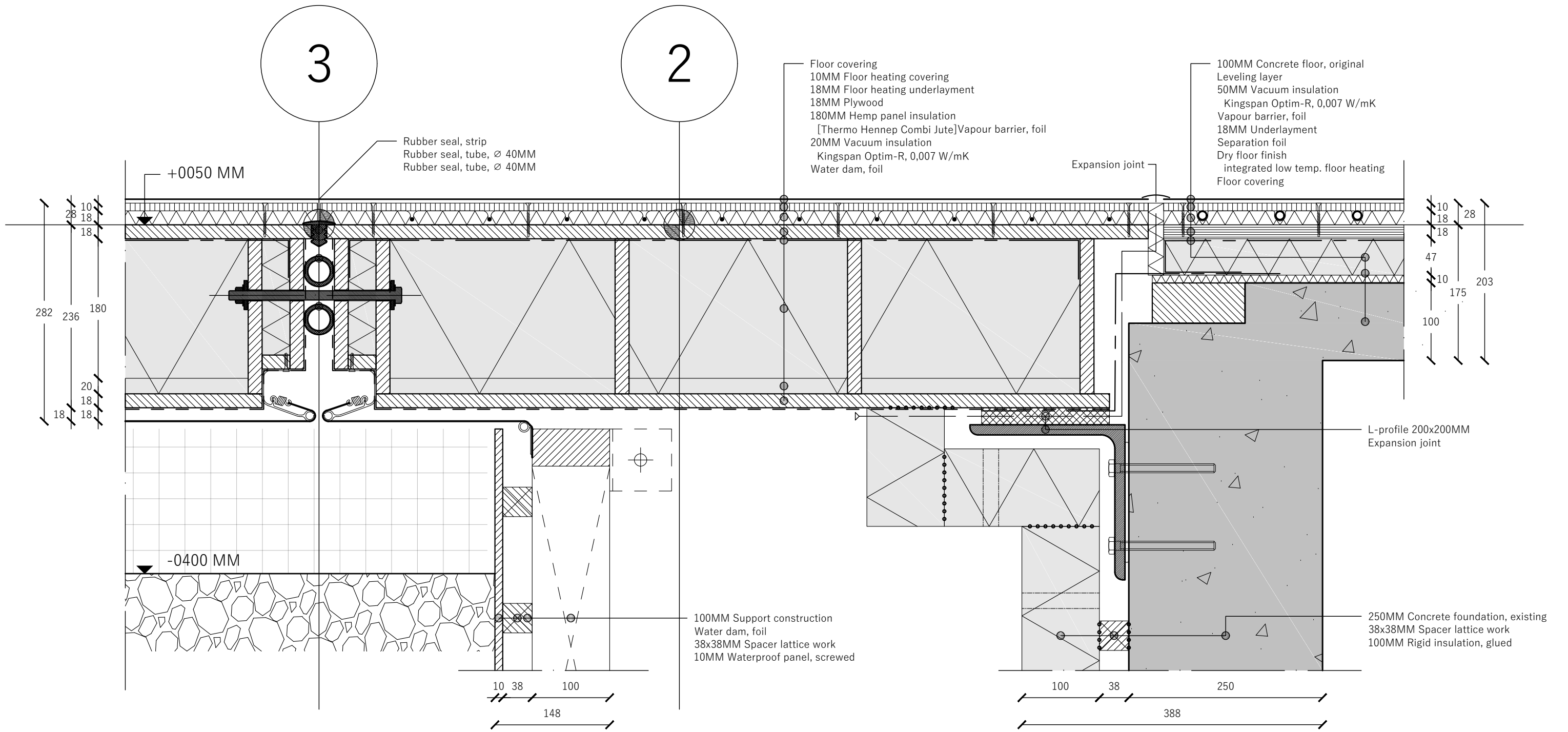
Revitalisation with adaptable dwellings in A'dam Nieuw West
Jelle Grunstra, 4163834 - MSc. Arch: Architectural Engineering



D.A12-3 Module facade, corner

1:5 A3

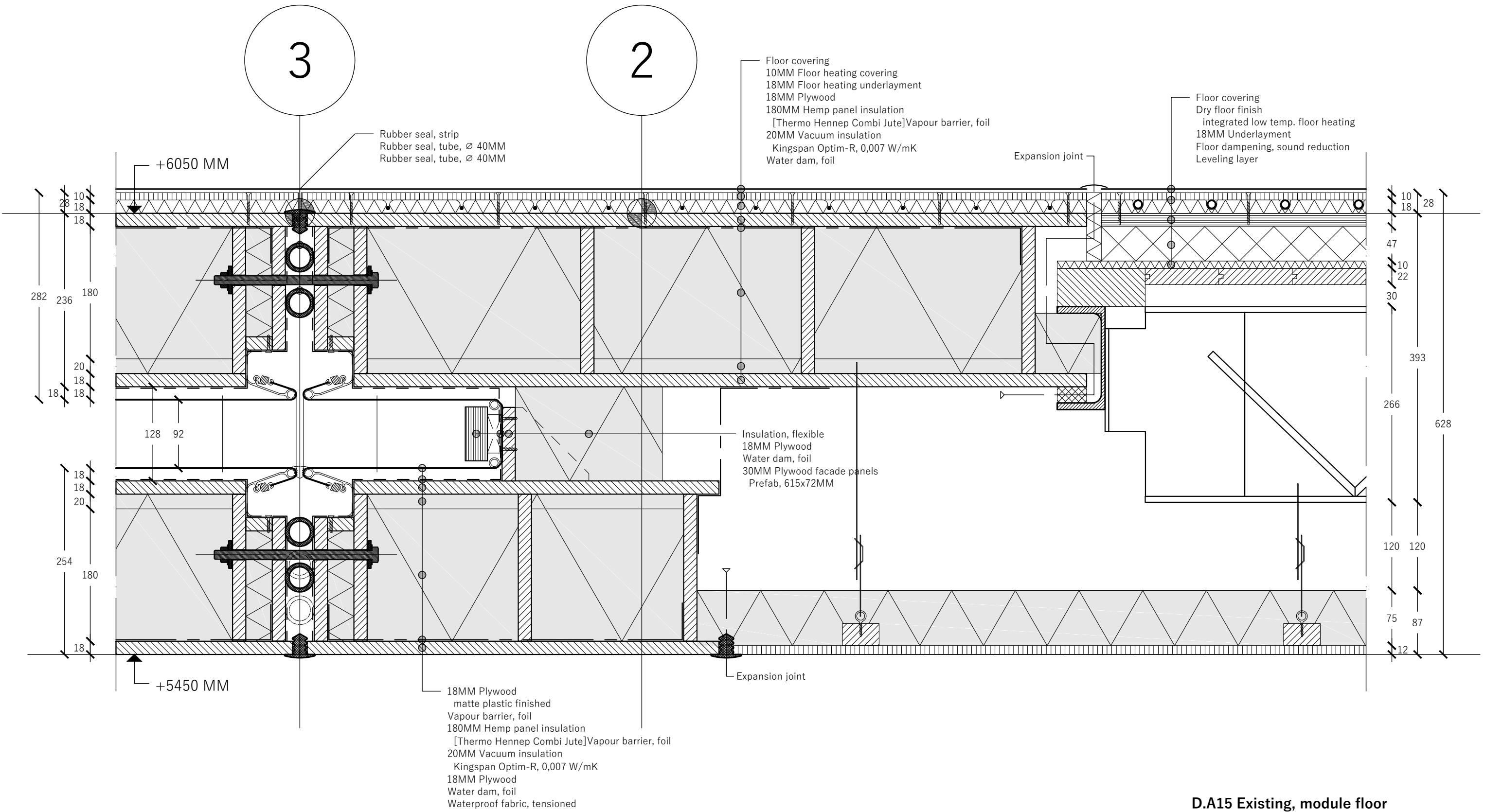
Revitalisation with adaptable dwellings in A'dam Nieuw West
Jelle Grunstra, 4163834 - MSc. Arch: Architectural Engineering



D.A14 Existing, module ground floor

1:5 A3

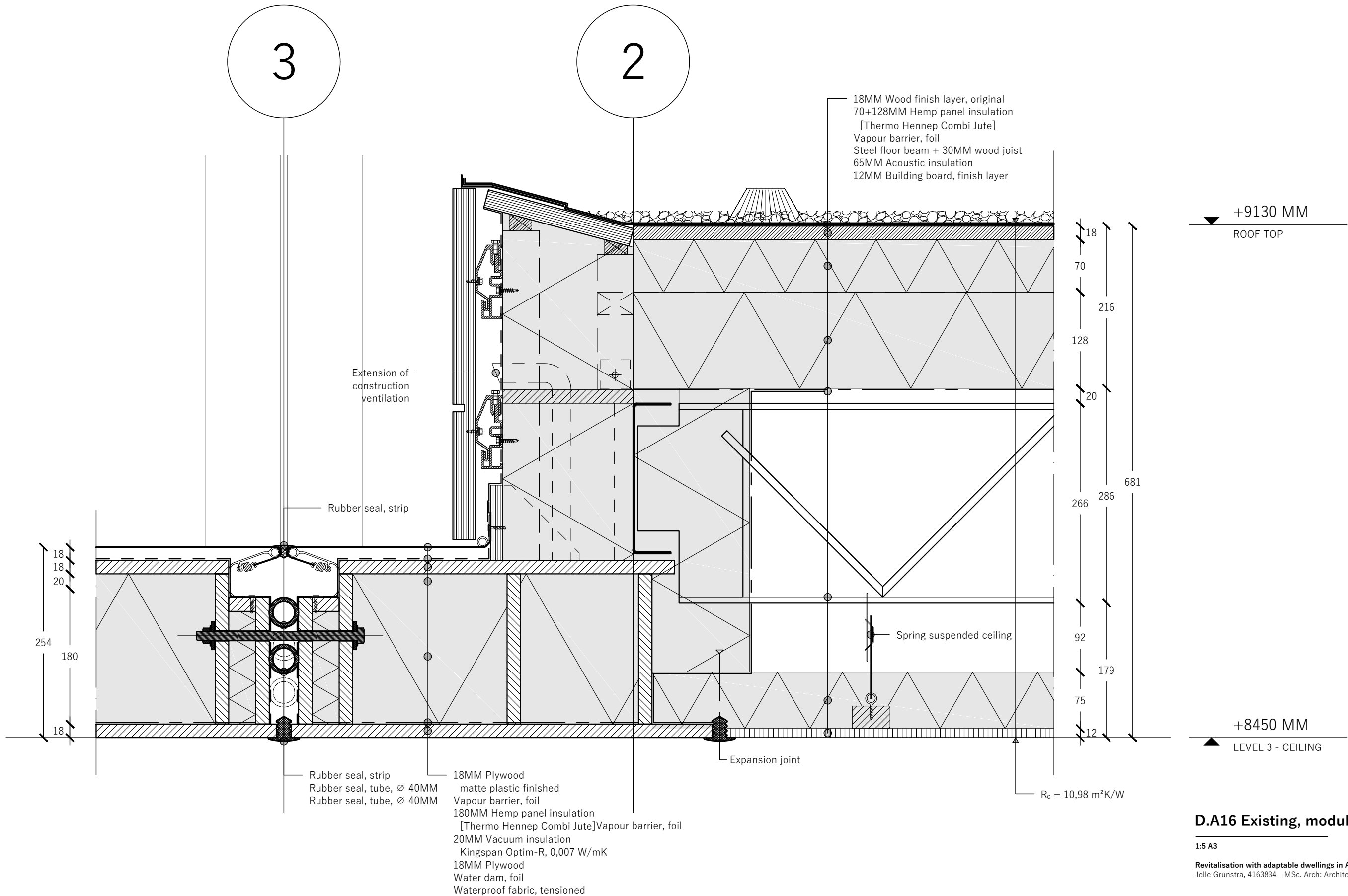
Revitalisation with adaptable dwellings in A'dam Nieuw West
 Jelle Grunstra, 4163834 - MSc. Arch: Architectural Engineering



D.A15 Existing, module floor

1:5 A3

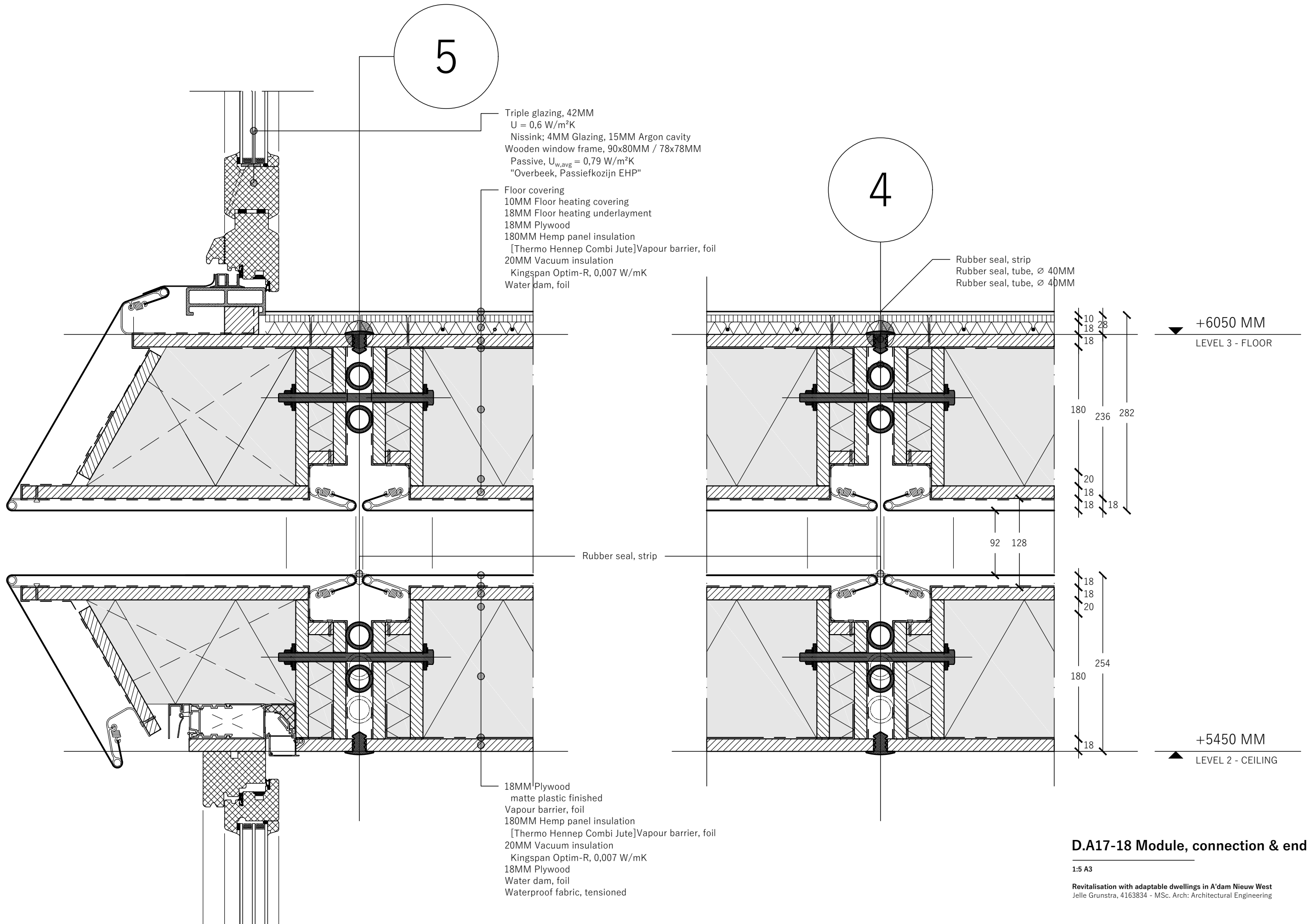
Revitalisation with adaptable dwellings in A'dam Nieuw West
 Jelle Grunstra, 4163834 - MSc. Arch: Architectural Engineering



D.A16 Existing, module roof edge

1:5 A3

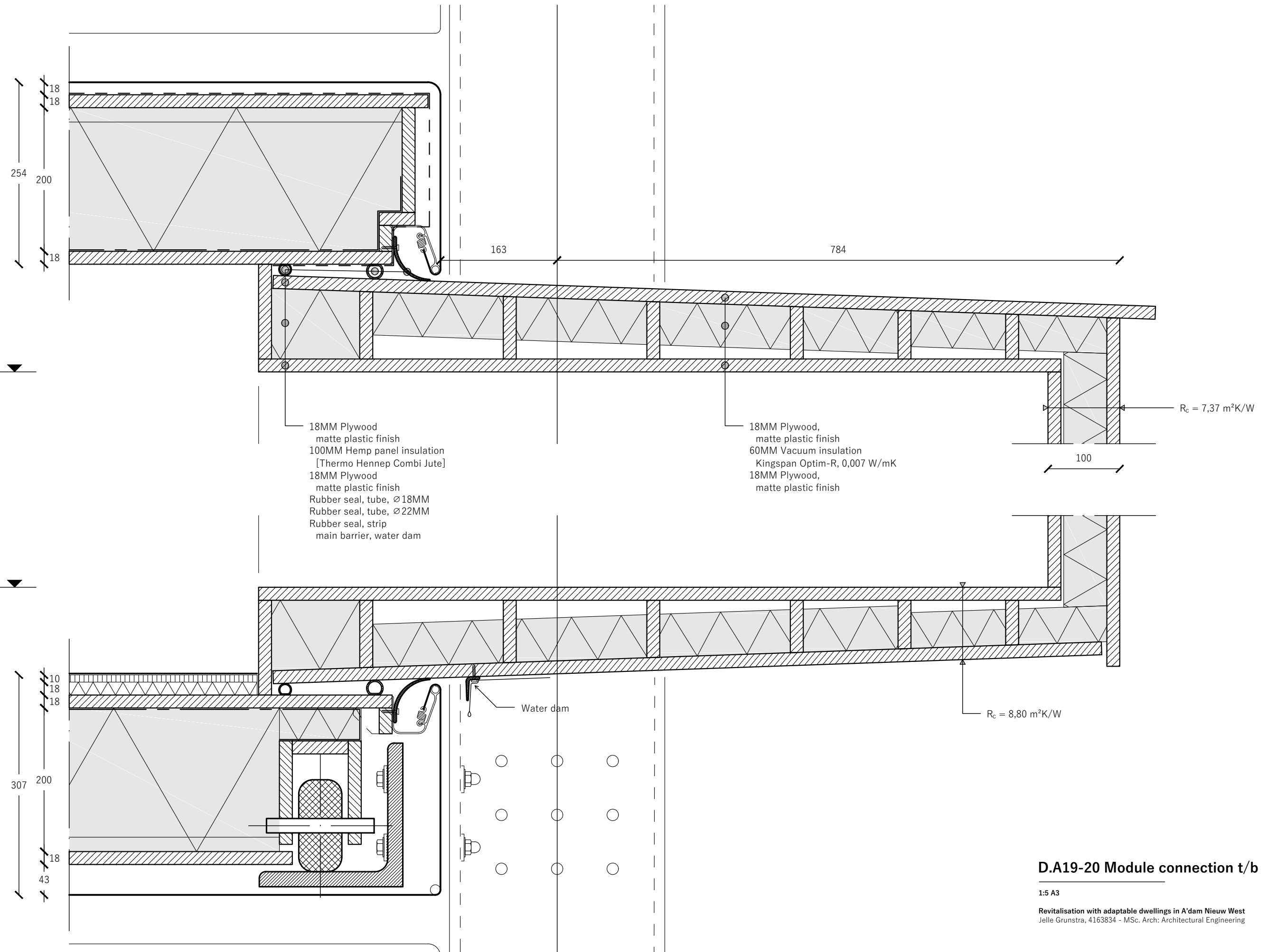
Revitalisation with adaptable dwellings in A'dam Nieuw West
Jelle Grunstra, 4163834 - MSc. Arch: Architectural Engineering



D.A17-18 Module, connection & end

1:5 A3

Revitalisation with adaptable dwellings in A'dam Nieuw West
 Jelle Grunstra, 4163834 - MSc. Arch: Architectural Engineering



+8300 MM
CEILING, BONUS

+6200 MM
FLOOR, BONUS

18MM Plywood
matte plastic finish
100MM Hemp panel insulation
[Thermo Hennep Combi Jute]
18MM Plywood
matte plastic finish
Rubber seal, tube, Ø18MM
Rubber seal, tube, Ø22MM
Rubber seal, strip
main barrier, water dam

18MM Plywood,
matte plastic finish
60MM Vacuum insulation
Kingspan Optim-R, 0,007 W/mK
18MM Plywood,
matte plastic finish

$R_c = 7,37 \text{ m}^2\text{K/W}$

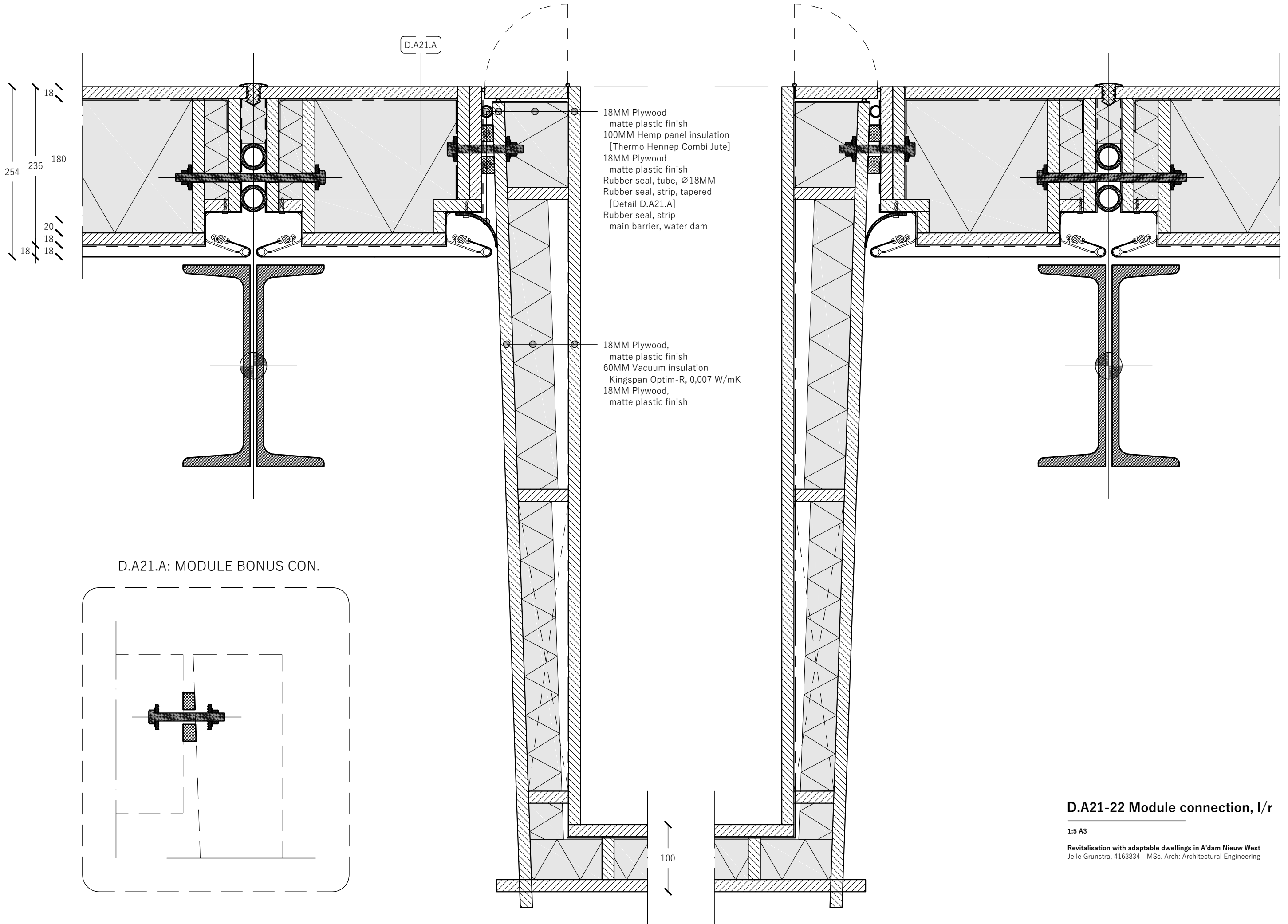
$R_c = 8,80 \text{ m}^2\text{K/W}$

Water dam

D.A19-20 Module connection t/b

1:5 A3

Revitalisation with adaptable dwellings in A'dam Nieuw West
Jelle Grunstra, 4163834 - MSc. Arch: Architectural Engineering



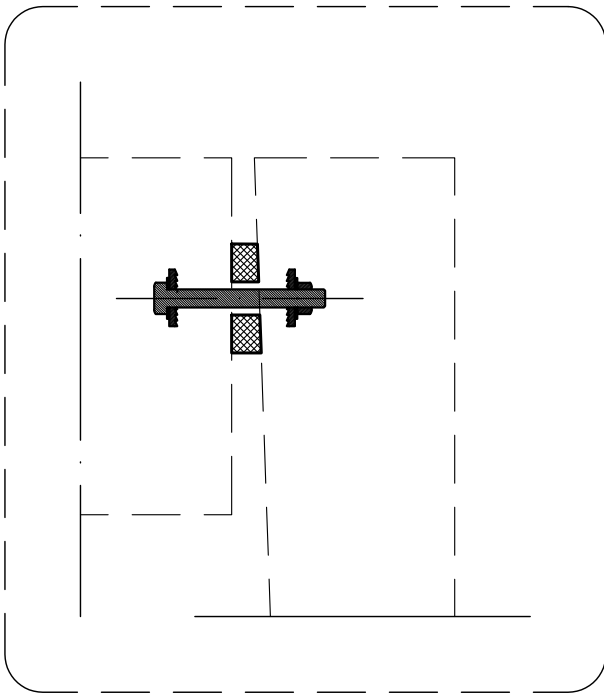
D.A21.A

254
18
236
180
20
18
18

18MM Plywood
matte plastic finish
100MM Hemp panel insulation
[Thermo Hennep Combi Jute]
18MM Plywood
matte plastic finish
Rubber seal, tube, \varnothing 18MM
Rubber seal, strip, tapered
[Detail D.A21.A]
Rubber seal, strip
main barrier, water dam

18MM Plywood,
matte plastic finish
60MM Vacuum insulation
Kingspan Optim-R, 0,007 W/mK
18MM Plywood,
matte plastic finish

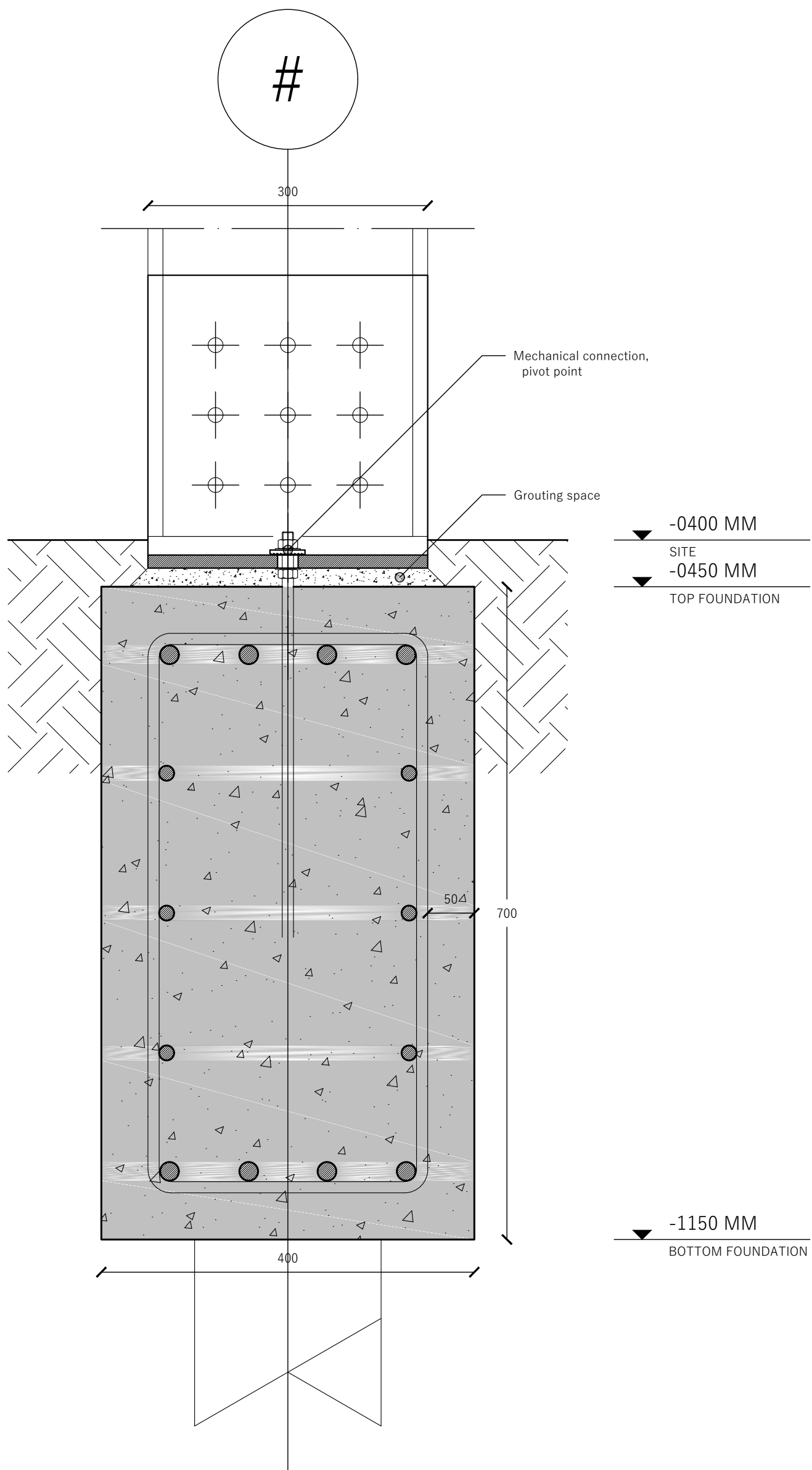
D.A21.A: MODULE BONUS CON.



D.A21-22 Module connection, l/r

1:5 A3

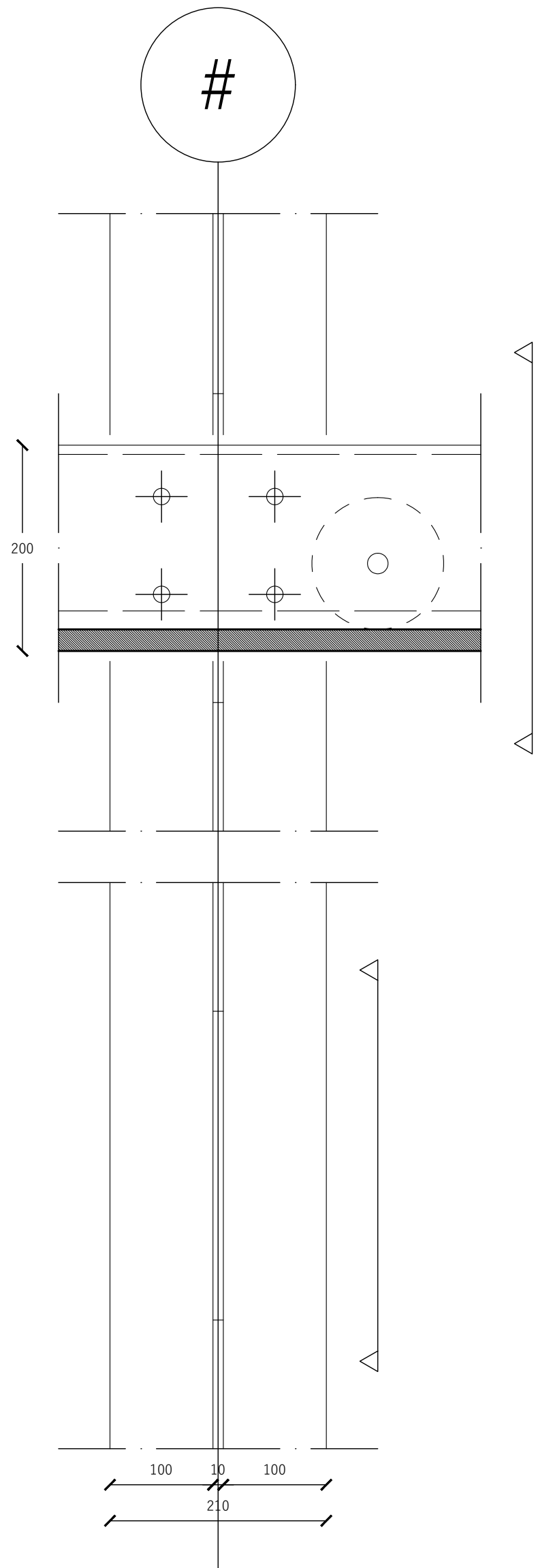
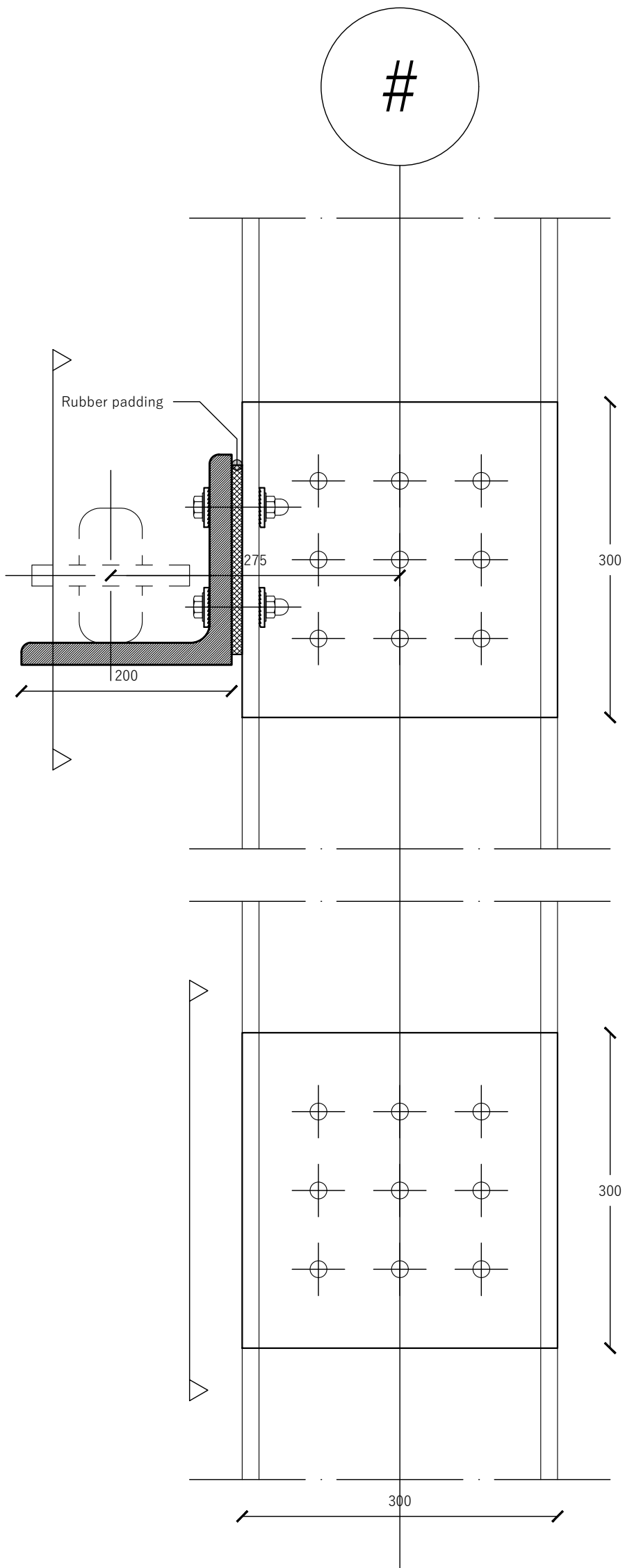
Revitalisation with adaptable dwellings in A'dam Nieuw West
Jelle Grunstra, 4163834 - MSc. Arch: Architectural Engineering



D.C01 Column foundation

1:5 A3

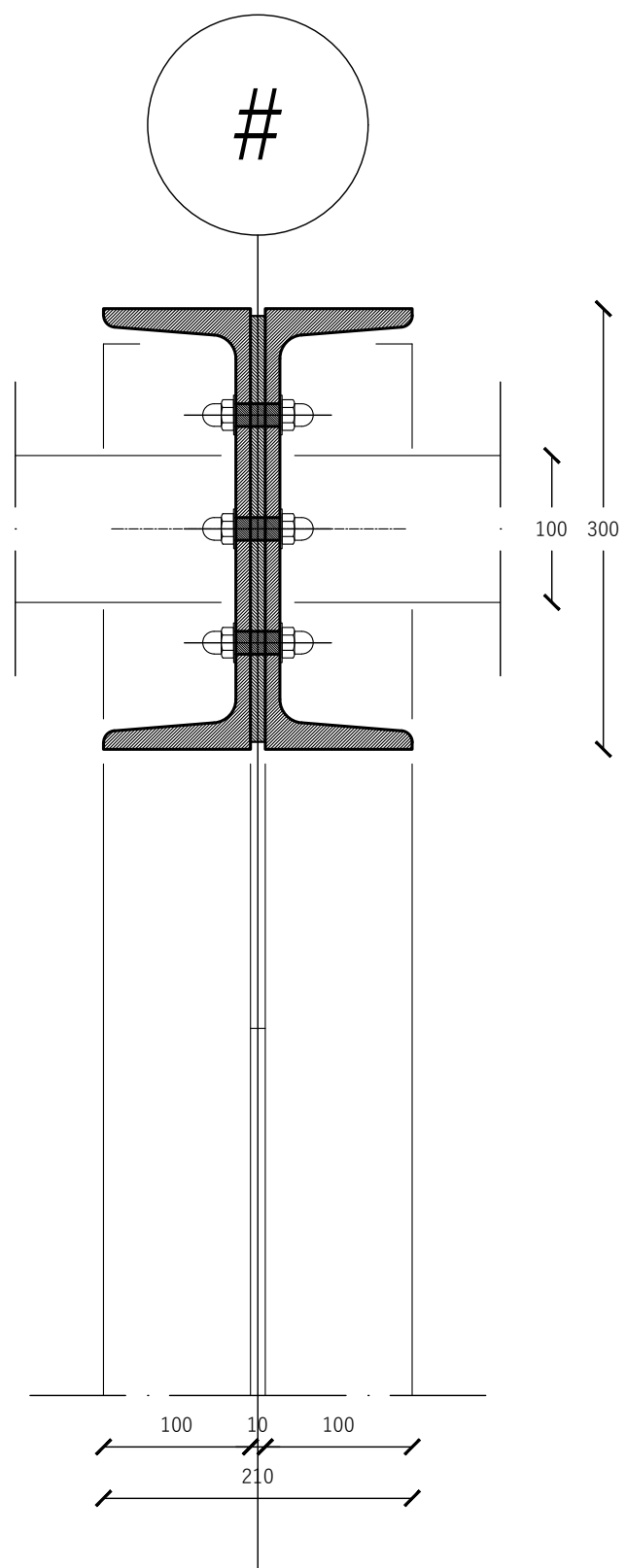
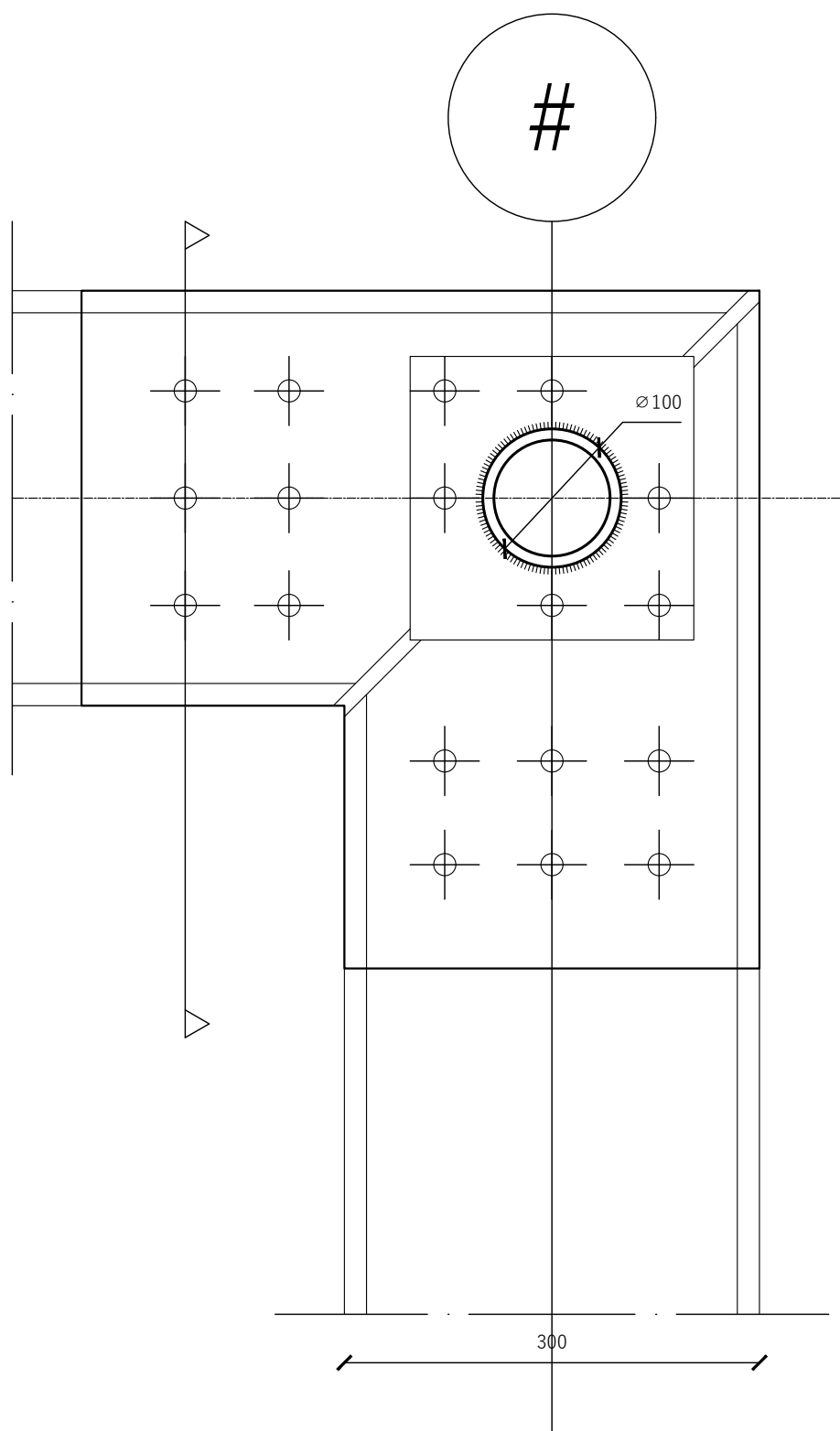
Revitalisation with adaptable dwellings in A'dam Nieuw West
 Jelle Grunstra, 4163834 - MSc. Arch: Architectural Engineering



D.C02-3 Column connection, rail

1:5 A3

Revitalisation with adaptable dwellings in A'dam Nieuw West
 Jelle Grunstra, 4163834 - MSc. Arch: Architectural Engineering



D.C04 Column top

1:5 A3

Revitalisation with adaptable dwellings in A'dam Nieuw West
 Jelle Grunstra, 4163834 - MSc. Arch: Architectural Engineering