

Making use of Point Cloud for Generating Subtractive Solar Envelopes

Alkadri, Miktha; De Luca, Francesco; Turrin, Michela; Sariyildiz, Sevil

Publication date

2019

Document Version

Final published version

Published in

Proceedings eCAADe SIGraDi 2019

Citation (APA)

Alkadri, M., De Luca, F., Turrin, M., & Sariyildiz, S. (2019). Making use of Point Cloud for Generating Subtractive Solar Envelopes. In J. P. Sousa, G. Castro Henriques, & J. P. Xavier (Eds.), *Proceedings eCAADe SIGraDi 2019: Architecture in the Age of the 4th Industrial Revolution* (pp. 633-640). eCAADe.

Important note

To cite this publication, please use the final published version (if applicable).
Please check the document version above.

Copyright

Other than for strictly personal use, it is not permitted to download, forward or distribute the text or part of it, without the consent of the author(s) and/or copyright holder(s), unless the work is under an open content license such as Creative Commons.

Takedown policy

Please contact us and provide details if you believe this document breaches copyrights.
We will remove access to the work immediately and investigate your claim.

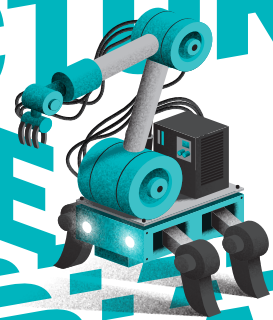
Green Open Access added to TU Delft Institutional Repository

'You share, we take care!' - Taverne project

<https://www.openaccess.nl/en/you-share-we-take-care>

Otherwise as indicated in the copyright section: the publisher is the copyright holder of this work and the author uses the Dutch legislation to make this work public.

ARCHITECTURE IN THE AGE OF THE 4TH INDUSTRIAL REVOLUTION



Edited by

José Pedro Sousa

Gonçalo Castro Henriques

João Pedro Xavier

Volume I

The eCAADe and SIGraDi Conference

11-13 sep 2019, Faculty of Architecture

University of Porto, Portugal

Editors

José Pedro Sousa, Faculty of Architecture, University Porto
Gonçalo Castro Henriques, Rio de Janeiro Federal University
João Pedro Xavier, Faculty of Architecture, University Porto

1st Edition, September 2019

Architecture in the Age of the 4th Industrial Revolution – Proceedings of the 37th International Conference on Education and Research in Computer Aided Architectural Design in Europe, and of the 23rd Conference Iberoamerican Society of Digital Graphics, Porto, Portugal, 11th-13th September 2019, Volume 1. Edited by José Pedro Sousa, Gonçalo Castro Henriques and João Pedro Xavier. Brussels: Education and Research in Computer Aided Architectural Design in Europe; Rio de Janeiro: Iberoamerican Society of Digital Graphics; Porto: Faculty of Architecture, University of Porto, Portugal.

ISBN

9789491207174 (Volume 1)

978-94-91207-17-4

Copyright © 2019

Legal Deposit

460230/19

Publishers

eCAADe (Education and Research in Computer Aided Architectural Design in Europe)

SIGraDi (Iberoamerican Society of Digital Graphics)

FAUP (Faculty of Architecture, University Porto)

Porto, Portugal

Cover Design

Dobra

Printed by

Lusoimpress.com

All rights reserved. Nothing from this publication may be produced, stored in computerised system or published in any form or in any manner, including electronic, mechanical, reprographic or photographic, without prior written permission from the publisher. Authors are responsible for all pictures, contents and copyright-related issues in their own paper(s).

eCAADe SIGraDi 2019

Architecture in the Age of the 4th Industrial Revolution

Volume 1

Proceedings

The 37th Conference on Education and Research in Computer Aided Architectural Design in Europe

The 23rd Conference of the Iberoamerican Society Digital Graphics

Conference

11th-13th September 2019

Porto, Portugal

Faculty of Architecture

University of Porto

Edited by

José Pedro Sousa

Gonçalo Castro Henriques

João Pedro Xavier

- 561 A Digital Twin for Directing People Flow in Preserved Heritage Buildings**
Armando Trento, Gabriel Wurzer, Ugo Maria Coraglia
- 569 A New Approach to the Cultural Heritage Documentation Process**
Hugo Guimarães Sampaio, Leonardo Luna de Melo Jorge, Rafael Mourão Fiuza,
Daniel Ribeiro Cardoso
- 577 Design - ALGORITHMIC AND PARAMETRIC 1**
- 579 Interventions in the urban setting through generative design and digital fabrication**
Marcelo Paysse Álvarez, Fernando García Amen, Paulo Pereyra Bonifacio
- 585 Convolutas**
Francisco Gonzalez-Quintial, Andres Martin-Pastor
- 595 Contemporary Architecture between Research and Practice**
Salvator-John A. Liotta
- 605 Customizing Mass Housing in Brazil: Introduction to an Integrated System**
Alexander Lopes de Aquino Brasil, Juarez Moara Santos Franco
- 613 Biomimetic Reciprocal Frames**
Caio Castriotto, Guilherme Giantini, Gabriela Celani
- 621 Architectural Design in Open-Source Software**
Kevan Cress, Philip Beesley
- 631 Interaction - HUMAN-COMPUTER**
- 633 Making use of Point Cloud for Generating Subtractive Solar Envelopes**
Miktha Farid Alkadri, Francesco De Luca, Michela Turrin, Sevil Sariyildiz
- 641 Development of a Semantic Segmentation System for Dynamic Occlusion Handling in Mixed Reality for Landscape Simulation**
Daiki Kido, Tomohiro Fukuda, Nobuyoshi Yabuki
- 649 Post-flâneur in Public Space**
Gorsev Argin, Burak Pak, Handan Turkoglu
- 659 Dexterity-controlled Design Procedures**
Federico Garrido, Joost Meyer
- 669 Jamming Formations**
Kyriaki Goti, Shir Katz, Ehsan Baharlou, Lauren Vasey, Achim Menges

Making use of Point Cloud for Generating Subtractive Solar Envelopes

Miktha Farid Alkadri¹, Francesco De Luca², Michela Turrin³,
Sevil Sariyildiz⁴

^{1,3,4}Chair of Design Informatics, Faculty of Architecture and the Built Environment, TU Delft ²Department of Civil Engineering and Architecture, Tallinn University of Technology

^{1,3,4}{M.F.Alkadri|M.Turrin|I.S.Sariyildiz}@tudelft.nl ²francesco.deluca@ttu.ee

As a contextual and passive design strategy, solar envelopes play a great role in determining building mass based on desirable sun access during the predefined period. With the rapid evolution of digital tools, the design method of solar envelopes varies in different computational platforms. However, current approaches still lack in covering the detailed complex geometry and relevant information of the surrounding context. This, consequently, affects missing information during contextual analysis and simulation of solar envelopes. This study proposes a subtractive method of solar envelopes by considering the geometrical attribute contained in the point cloud of TLS (terrestrial laser scanner) dataset. Integration of point cloud into the workflow of solar envelopes not only increases the robustness of final geometry of existing solar envelopes but also enhances awareness of architects during contextual analysis due to consideration of surface properties of the existing environment.

Keywords: *point cloud data, solar envelopes, subtractive method, solar access*

INTRODUCTION

Awareness to consider solar access during the development of built environment principally is taken into account since the Ancient period. This can be observed through several examples such as The Hanging Gardens during the Babylonian period in 605-562 BCE (Cartwright 2018), El-Lahun village in Egypt (1857-1700 BC) with a checkerboard urban grid and narrow streets facing North-South (Mazzone 2017), and Classical Greek cities in 4th Century BC utilizing the idea of solar oriented homes (Butti and Perlin 1980). These principles ultimately drive further

the concept of solar envelopes proposed by Knowles (1974). As a contextual and passive design strategy, solar envelopes consist of imaginary building mass determined by considering the amount of desirable sun access without violating surrounding buildings during the predefined period. With a principle of space-time constraint (Knowles 1981), input parameter of solar envelopes can be divided into geographic properties (plot, the distance of surrounding buildings, and shadow fences) and climatic properties (site location such as latitude and longitude, and time limit). These parameters play an important role in de-

termining the volumetric size of solar envelopes.

Furthermore, the evolution of digital tools affects design platforms and methods of solar envelopes, ranging from conventional techniques such as descriptive, profile angle, and 2D orthographic projection (Topaloglu 2003) to computational methods including descriptive geometry (DG), solar obstruction angle (SOA), constructive solid geometry (CSG), and digital elevation modelling (DEM) (Alkadri et al 2018). However, these current methods pose several barriers that may result in missing information during contextual analysis. In most cases, for example, the existing 3D site modelling (e.g., solid modelling (Staneva 2008)) lacks in preserving complex geometry of surrounding context especially when it comes to the isolated and dense areas. Consequently, relevant site properties such as vegetation, material and other temporal site elements are often neglected during the simulation of solar envelopes.

One of the fascinating methods is subtractive form finding mechanism (De Luca, 2017) in which refers to CSG. This method generates solar envelopes by using volumetric samples of three-dimensional matrix or the so-called 3D polyhedral. In principle, the polyhedra are extruded from the proposed land parcel based on criteria of new building such as width and height, functional utilities, number of floors and the like. Ideally, every 3D polyhedron can be associated with one typical room in the real building. This subtractive method, furthermore, involves sun visibility to identify visible sun hours during a selected period. In this way, each polyhedron acts as a 3D voxel carrying information relative to sun access of neighbouring buildings. However, the mechanism of sun visibility becomes challenging when dealing with blocked areas from the sun. The current approach of context modelling merely focuses on the self-blocked mechanism from the existing building's geometry so as to predominantly neglect site properties that might be relevant for sunlight hours simulation (e.g., vegetation). Besides, the existing approach also uses centroid points that represent surrounding windows during ray tracing analysis. These window

samples are, however, limited to calculate the entire area of surrounding facades. This study, therefore, attempts to improve the existing workflow of solar envelopes by making use of potential application of point cloud data in capturing the real context.

As a product of 3D laser scanning, point cloud has been extensively used regarding data representation and data analysis in various disciplines such as civil engineering, computer science, photogrammetry, geoscience, and heritage. As a data structure, point cloud indicates a collection of multidimensional points (Randall, 2013). It is usually characterized by spatial XYZ coordinates and is optionally be assigned by typical attributes such as reflection intensity (I) (Weinmann, 2016), color properties (RGB) (Fujita, Hoshino, Ogata, & Kobayashi, 2015), and any additional abstract information. These attributes are, furthermore, used to perform ray tracing analysis, substituting the role of centroid points on surrounding windows. Inclusion of surrounding properties during the simulation will expand the result analysis comprehensively.

In general, the proposed method in this study contributes to several aspects of the cycle of architectural design practices as follows:

- The well-informed site allows architects to construct more possibilities regarding simulation of solar envelopes such as solar collector and other microclimatic analysis. The proposed method simultaneously enhances awareness of architects during contextual analysis so that environmental properties of existing context can be paid more attention within the conceptual design phase.
- Integration between 3D scanning technology and solar envelopes may increase the robustness of the result analysis due to consideration of surface properties of the existing environment.

Furthermore, the following section will describe the computational procedure of the proposed method.

METHOD

This study proposes a computational workflow for generating subtractive solar envelopes based on point cloud data (see Fig.1). In general, the computational procedure is categorized into four sections consisting of input, task, digital tools, and output. Description of each section is discussed in detail below.

Figure 1
Computational procedure of subtractive solar envelopes

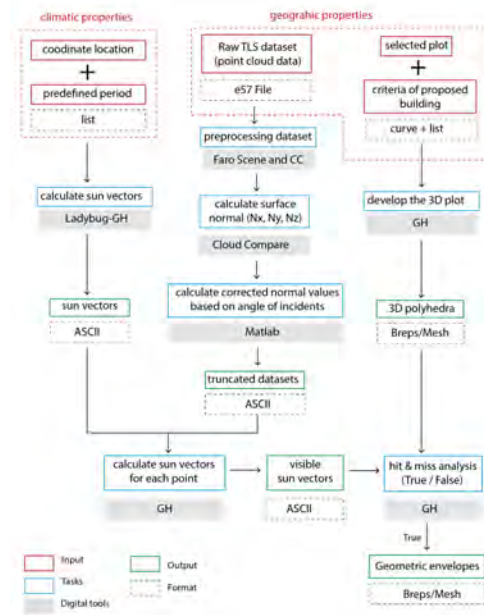
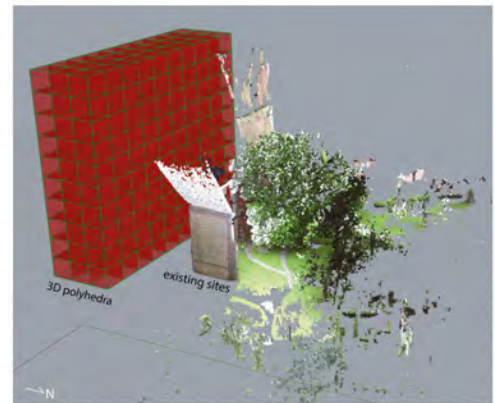


Figure 2
The selected site and 3D polyhedra (land parcel)

am to 9 pm. With the time step of 2, this setting results in around 25 sun vectors. Meanwhile, geometric properties involve two parts: the proposed building and surrounding environments. The proposed building is represented by 3D polyhedra that consist of 300 polyhedron (see Fig.2). Each polyhedron indicates the dimension of one typical room in the real building, consisting of 3 x 3 x 3 m. It is placed in front of the existing building.

For the surrounding environment, this study employs a small sample of point cloud dataset. It consists of a small portion of building facades from TLS (terrestrial laser scanning) dataset of Middlestum Church in Groningen, Netherlands. The dataset is collected by using Faro Focus 3D laser scanner with wavelength 950 nm. It is also supported by Nikon D5300 for capturing colour properties. The use of TLS datasets principally aims at obtaining more accurate representation, high-resolution formats, and broader coverage of isolated areas in comparing with ALS (airborne LiDAR) datasets. The data provided through these inputs are elaborated within the developed workflow.



Input

In principle, all input is originated from climatic and geographic properties. Climatic properties are used to calculate the number of sun vectors that will be simulated on each point cloud during the simulation. It is produced according to a specific location within a certain period. In this case, the selected site is located in Groningen, Netherlands with latitude position 53.2194° N and longitude 6.5665° E. The time setting takes a sample of the required period on 21st for each month from May to September, starting from 9

Tasks

This section contains a series of specific operations to generate solar envelopes. Some of these tasks can be performed simultaneously such as calculation of

solar vectors and development of the 3D plot (polyhedra) due to simple construction procedures, while task of dataset pre-processing and normal values correction need to run sequentially due to the requirement of preliminary input. Some of these tasks are briefly discussed as follows:

- Dataset pre-processing. This task includes outlier (unnecessary cloud of points) removal, dataset subsampling, and conversion of the dataset's format. The use of dataset subsampling permits us to adjust the density of points so as to reduce time consumption during the simulation. In this case, the dataset is subsampled by 5 cm for the distance between points. Accordingly, it results in approximately 449.267 points from 31.5 million of points
- Calculation of surface normal. In order to calculate the normal direction of each point within the dataset, we apply Hough Normal plugin (Boulch & Marlet, 2016) in Cloud Compare (CC) for an unstructured point cloud. In this case, several tolerance angles are simulated to set a variety of normal values from the angle of incidences, ranging from 10° to 90° . A detailed procedure of this section has been addressed in our previous work (Alkadri, Turrin, & Sariyildiz, 2019)
- Calculation of optimal normal values. In principle, some points within a certain angle can correspond very well to the projection of the laser beam during scanning. This affects the distribution of points that show point characteristics at a certain angle. Thus, an evaluation of the scattering points is performed by only keeping the densest cloud from all angles. It simultaneously aims at minimizing erroneous level regarding environmental factors during scanning. In this case, the dataset truncation is set to range between 0 - 0.01 that results in proximately 239.178 total points to be selected for optimal normal values (see Fig.3).

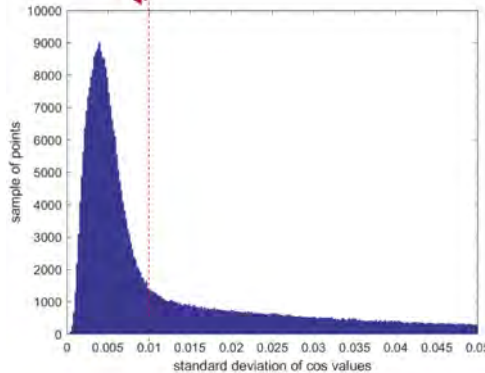
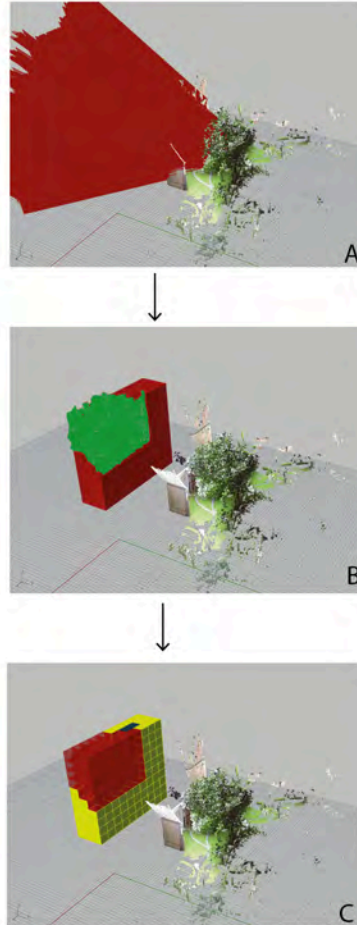


Figure 3
The truncation of the dataset

- Calculation of sun visibility. This step aims at calculating visible sun vectors that will be applied to each point within the dataset. It is done by multiplying sun vectors from the indicated period with optimal normal vectors from truncated points. In order to obtain points that meet the criteria of sun visibility, these vectors are subsequently filtered by considering only values that are smaller than the projected angle of 90° . This is because values that are equal and larger than 90° consist of zero and negative cosine values, respectively. It means that those values exclude within the list of visible sun vectors.
- Ray tracing analysis. This part consists of ray tracing procedure or hit & miss analysis between selected sun vectors, points and, the 3D polyhedra (300 polyhedron). Figure 4A illustrates that selected points for ray tracing analysis are primarily originated from the building façade due to optimized normal values of the dataset. This calculation results in around 110, 7 million of intersections (see Fig. 4B). With a Boolean operation, voxels with "True" values will be used to generate solar envelopes while "False" values are indicated as an obstruction that needs to be eliminated (see Fig. 4C).

Figure 4
Ray tracing
procedure A - Hit &
miss analysis B -
Points obstruction C
- Voxels intersection



Digital tools

In general, this study employs various digital tools depending on specific tasks performed within the computational workflow. For examples, 3D modelling and environmental simulation during the generation of solar envelopes are predominantly supported by Rhino and Ladybug component in Grasshopper. Meanwhile, dataset preparation and

calculation of surface normal of point clouds in different angles are performed by Faro Scene and Cloud Compare (CC), respectively. Lastly, Matlab permits us to calculate optimal normal values and make a truncation for selected datasets.

Output

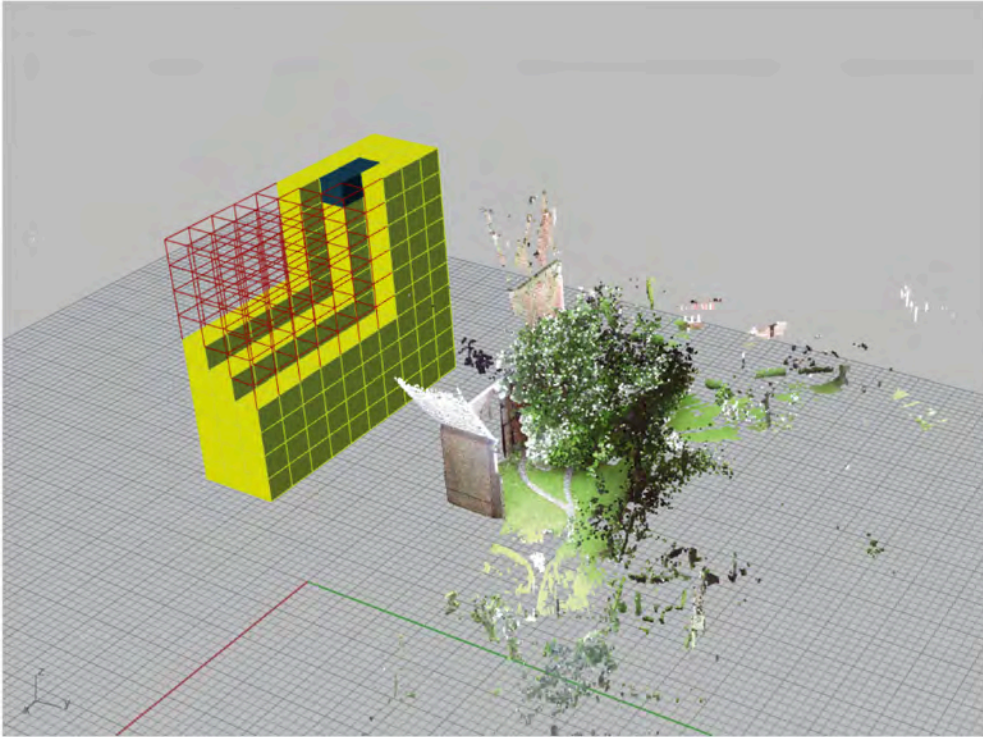
According to the workflow presented in Fig.1, several outputs have been generated during the process of simulation depending on the performed specific task in the workflow. These outputs then become input for the following procedure such as sun vectors, 3D polyhedra, truncated datasets, and visible sun vectors. The final output is geometric envelopes that successfully meet the criteria of solar envelopes.

RESULT AND DISCUSSION

As a result of the simulation (see Fig.5), this study presents several findings regarding the final geometry of solar envelopes as follows:

- The total voxels (polyhedron that carries information of sun vectors) that successfully meet the criteria for solar envelopes are 208 out of 300. It means that around 92 voxels are considered as obstruction geometries. These obstructive voxels are subsequently eliminated because of blocking direct sun access to surrounding facades during the indicated period. According to Figure 5, those voxels are averagely located on the above of the 4th floor but remains three full blocks on the Westside. This is because solar vectors produced by predefined cut-off-times and the site location are predominantly toward the Western direction with the incident angle approximately laying between 30° - 60° . In principle, this result can be more robust if we densify solar vectors during the simulation. For example, by increasing the number of cut-off times allows us not only to increase the number of solar vectors but also to generate a broader incident angle so as to widen intersection coverage. This, however, will require high computational cost and

Figure 5
The final geometry
of solar envelopes



time due to hundreds of millions of rays intersection.

- The remaining voxels constitute colour-coded values that show the level of obstruction index, ranging from yellow with 0 obstructions to the light green with medium obstruction and the last, dark green with a high level of obstruction. In this case, Figure 5 illustrates that the polyhedra predominantly consists of yellow colour. Only two voxels are being identified containing medium obstruction index, which is located on the top of the polyhedra. It means that these voxels are potentially violating direct sun access to the surrounding building within this period. When it comes to functional utilities, these remaining voxels can be filled with any building's program that needs direct sun access while for the removed one and light green voxels may be filled with open space and courtyard, respectively.

CONCLUSION AND FUTURE RECOMMENDATION

This study proposes a novel method of subtractive solar envelopes by making use of 3D point cloud data. The proposed method aims at not only compensating missing information during contextual analysis but also integrating existing computational workflow of solar envelopes with geometrical properties of 3D scanning technology. According to the proposed workflow, several concluding remarks can be drawn as follows:

- The use of point cloud data in solar envelopes allows us to extend the functional properties of 3D scanning technology into the architectural design stage especially related to environmental analysis rather than merely as data visualization.
- Calculation of optimal normal values during the dataset processing is used not only to obtain corrected values of point cloud but also to minimize the erroneous level of datasets dur-

ing scanning.

- Subtractive mechanism of point cloud confirms the feasibility of the proposed method to deal with solar access by including site properties of the existing environment.
- The proposed method can be a starting point to raise awareness of public policies especially related to contextual analysis and microclimate condition for the future development of sustainable architecture and the built environment.

However, some acknowledge limitations need further consideration. For example, the computational issue during the simulation remains a great barrier to perform a huge amount of the dataset. Alternatively, some aspects need particular adjustments such as the number of sun vectors and dataset subsampling. Besides, the inclusion of complex urban properties may enhance the analysis result of simulation such as street, urban scale, and the distance between the land parcel and existing building. This is important because these aspects may influence the intersection of total rays during the simulation so that it can affect the final geometry of solar envelopes.

Furthermore, this study highlights some potential aspects for future recommendation. For example, radiometric information contained in point cloud data can be further explored to integrate material properties of the existing environment with the proposed solar envelopes. This can simultaneously complement environmental performance simulation of new solar envelopes regarding the contextual analysis of the built environment. Moreover, the proposed method can be further explored by using a different climatic context such as tropical countries. This can expand a wide range of design implementation of solar envelopes with different urban settings.

ACKNOWLEDGEMENT

The research described in this paper was part of Ph.D research which financially supported by Indonesian Endowment Fund for Education (LPDP). The authors would like to thank to Valentini Vanhecke (4Visualiza-

tion) for providing access to the dataset.

REFERENCES

- Alkadri, MF, Turrin, M and Sariyildiz, S 2018, 'The use and potential application of point clouds in simulation of solar radiation for solar access in urban contexts', *Advances in Computational Design*, 3, pp. 319-338
- Alkadri, MF, Turrin, M and Sariyildiz, S 2019, 'A computational workflow to analyse material properties and solar radiation of existing contexts from attribute information of point cloud data', *Building and Environment*, 155, pp. 268-282
- Boulch, A and Marlet, R 2016 'Deep Learning for Robust Normal Estimation in Unstructured Point Clouds', *Proceeding of SGP 2016*, Berlin, pp. 281-290
- Butti, K and Perlin, J 1980, *A Golden Threat 2500 Years of Solar Architecture and Technology*, Van Nostrand Reinhold Company
- Fujita, Y, Hoshino, Y, Ogata, S and Kobayashi, I 2015, 'Attribute assignment to point cloud data and its usage', *Global journal of computer science and technology*, 15, pp. 11-18
- Knowles, RL 1974, *Energy and form: An ecological approach to urban growth*, The MIT Press
- Knowles, RL 1981, *Sun, rhythm and form*, The MIT Press
- De Luca, F 2017 'Solar form finding. Subtractive Solar Envelope and Integrated Solar Collection Computational Method for High-rise Buildings in Urban Environments', *Proceeding of ACADIA 2017 Conference DISCIPLINES+DISRUPTION*, Cambridge (MA), pp. 212-221
- Mazzone, D 2017, 'The Dark Side of a Model Community: The 'Ghetto' of el-Lahun', *The Journal of Ancient Egyptian Architecture*, 2, pp. 19-54
- Randall, T 2013, *Client guide to 3D scanning and data capture*, BIM Task Group
- Staneva, NN 2008, 'Approaches for generating 3D solid models in AutoCAD and solid works', *Journal of Engineering*, VI, pp. 28-31
- Topaloglu, B 2003, *Solar envelope and form generation in architecture*, Graduate School of natural and applied science of the middle east of technical university
- Weinmann, M 2016, *Reconstruction and analysis of 3D scenes*, Springer International Publishing
- [1] https://www.ancient.eu/Hanging_Gardens_of_Babylon/